



SUPREME COURT OF LOUISIANA

ANNUAL REPORT 2012

of the Judicial Council of the
Supreme Court



The Louisiana Supreme Court

WELCOMES YOU
TO THE INVESTITURE CEREMONY
OF

Justice Bernette Johnson

Chief Justice of the Court

THURSDAY, THE TWO THIRTY



THE SUPREME COURT OF LOUISIANA

From left: Justice Marcus R. Clark, Justice John L. Weimer, Justice Jeffrey P. Victory, Chief Justice Bernette Joshua Johnson, Justice Jeannette Theriot Knoll, Justice Greg G. Guidry, Justice Jefferson D. Hughes, III.

CHIEF JUSTICE BERNETTE JOSHUA JOHNSON

Seventh Supreme Court District
Jefferson and Orleans Parishes.*

JUSTICE GREG G. GUIDRY

First Supreme Court District
Jefferson, Orleans, St. Helena, St.
Tammany, Tangipahoa, and Washing-
ton Parishes.*

JUSTICE JEFFREY P. VICTORY

Second Supreme Court District
Allen, Beauregard, Bossier, Caddo,
DeSoto, Evangeline, Natchitoches,
Red River, Sabine, Vernon, and Web-
ster Parishes.*

JUSTICE JEANNETTE THERIOT KNOLL

Third Supreme Court District
Acadia, Avoyelles, Calcasieu, Cam-
eron, Jefferson Davis, Lafayette, St.
Landry, and Vermilion.*

JUSTICE MARCUS R. CLARK

Fourth Supreme Court District
Bienville, Caldwell, Catahoula,
Claiborne, Concordia, East Carroll,
Franklin, Grant, Jackson, La-
Salle, Lincoln, Madison, Morehouse,
Ouachita, Rapides, Richland, Tensas,
Union, West Carroll, and Winn
Parishes.*

JUSTICE JEFFERSON D. HUGHES, III

Fifth Supreme Court District
Ascension, East Baton Rouge, East
Feliciana, Iberville, Livingston, Pointe
Coupee, West Baton Rouge, and West
Feliciana Parishes.*

JUSTICE JOHN L. WEIMER

Sixth Supreme Court District
Assumption, Iberia, Jefferson,
Lafourche, Plaquemines, St. Bernard,
St. Charles, St. James, St. John the
Baptist, St. Martin, St. Mary, and
Terrebonne Parishes.*



*Chief Justice Catherine
D. "Kitty" Kimball,
Fifth Supreme Court
District, retired on
January 31, 2013.*

* See Court District Maps on pages 6-7.

A NEW CHAPTER BEGINS



Just a few months into 2012, Chief Justice Catherine D. Kimball announced that she would be retiring from the Louisiana Supreme Court in early 2013. After thirty years on the bench, twenty years as a Supreme Court justice and four years as Chief Justice, Chief Justice Kimball retired on January 31, 2013 to spend more time with her family. During her tenure on the Court, Chief Justice Kimball was a pioneer and a leader in many areas of judicial reform, most notably juvenile justice, drug courts and court technology. We miss her at the Court and we wish her well in her retirement. On February 1, 2013, we welcomed our newest Justice, Jefferson Davis Hughes III, who was elected from the Fifth Supreme Court District. Prior to his election to the Supreme Court, Justice Hughes served on the First Circuit Court of Appeal and the 21st Judicial District Court.

ABOUT THIS REPORT

The Supreme Court Annual Report is a useful guide to judicial personnel and contacts throughout the state, as well as an overview of the Court's progress in 2012, and includes maps of electoral districts for the Supreme Court, the Courts of Appeal, and District Courts.

RESOURCES ON THE WEB AT WWW.LASC.ORG

The **STATISTICAL DATA** section summarizes two-year activity trends in juvenile, civil, criminal and traffic categories for courts at all levels in the state.

The **2012 LOUISIANA SUPREME COURT ANNUAL REPORT** and the **GUIDE TO LOUISIANA COURTS** featuring a list of judges, clerks and administrators (complete with contact phone numbers) for the Courts of Appeal, District Courts, and City and Parish Courts statewide are now available on the Louisiana Supreme Court web site at www.lasc.org/press_room/publications.asp.

ON THE COVER

Investiture Ceremony of Chief Justice Bernette J. Johnson, the state's first African-American chief justice, on February 28, 2013.

A NEW CHAPTER BEGINS

On February 1, 2013, I became the 25th Chief Justice of the Louisiana Supreme Court and it is my honor to serve the citizens of our great state as Chief Justice. I look forward to working with the dedicated men and women of our state bench and bar, the Governor, the Executive Branch and the Louisiana State Legislature to continue to improve our judicial system and to provide the citizens of our state with a competent, fair and compassionate judiciary.

As a new chapter begins at the Supreme Court, we reflect on the Court's activities in 2012. As usual, it was a very busy and productive year. Statistics on case filings and dispositions are included in this Annual Report. I will take this opportunity to highlight just a few of the Court's recent accomplishments.

In 2012, we worked on a resolution of the Louisiana State Legislature which required that the Court conduct a comprehensive study of caseload data and examine the number of judges on appellate, district, parish and city courts "to determine changes necessary to the existing structure of the judiciary to provide the most efficient use of judicial resources." The Court created a ten-member committee to complete the study. This committee, chaired by Senator Ed Murray, includes various judges, legislators and citizen members. We look forward to reviewing the committee's findings.

Additionally, in response to a growing national concern regarding services for court users with limited English proficiency, the



Louisiana Supreme Court joined the *Consortium for Language Access in the Courts* and adopted a *Code of Professional Responsibility for Language Interpreters*. We plan to conduct training sessions for court interpreters on selected topics, such as the interpreter's role in the Court, legal terminology, the Louisiana Court system, modes of interpretation and ethics. These classes will be one of several requirements to become a "registered" court interpreter. The Supreme Court will maintain a list of registered interpreters, which will be available to courts, attorneys and other parties in need of these vital services.

Throughout the past year, we also placed an emphasis on the quality and relevance of the judicial education offered by the Louisiana Judicial College for state judges. Judicial College governance has now been restructured, newly revised by-laws have been adopted and a new Board of Governors composed of district, appellate and city court judges has been selected. Further, at the request of the Judi-

cial College, the Court enacted a rule whereby each judge must earn at least five hours of continuing education from courses offered by the Louisiana Judicial College.

We also took steps in 2012 to improve public access to the judicial system. In response to an increase in the number of pro se or self-represented litigants resulting from rising litigation costs and a weakened economy, we joined with the Louisiana State Bar Association to explore methods of assisting pro se litigants in navigating the legal system. A Task Force, chaired by Judge Harry Randow of the 9th Judicial District Court, was created to address this issue. The Task Force drafted recommendations on improving access to all levels of court, strengthening training for judges and court employees, improving the quality and availability of legal forms and simplifying court procedures and rules. Subsequently, the Louisiana District Judges Association formed the "Self-Represented Litigants Committee," chaired by Judge

MESSAGE FROM THE CHIEF JUSTICE

Lisa Woodruff-White under the direction of Judge Harry Randow, now president of the LDJA. The Committee's mission is to provide tools and information not only for the *pro se* litigant, but also to assist judges in effectively handling a case where a litigant appears in court without representation. The Committee has worked to inform judges and the general public of *pro se* litigant services currently available in Louisiana and to encourage the creation or enrichment of *pro se* litigant services within our court system. The Committee is also active in judicial education, presenting education seminars to explain and promote the efforts of various entities including the LSBA, the Clerks of Court Association and other legal service entities that provide information and assistance for *pro se* litigants.

We recognize that the public's most important contribution to our court system is jury service. However, we also recognize that the public often finds court proceedings confusing. To supplement the efforts of our state judges to fully explain court procedures to jurors, the Court created the "Committee to Study Plain Civil Jury Instructions." The Committee is charged with studying standard civil jury instructions and translating them into clear, concise and plain language. The Committee's draft instructions will be posted on the Court's website for public comment, and judges throughout the state will be asked to review and comment as well. Our goal is to give jurors clear and thorough instructions about the law that applies in each case. These instructions are a critical component of

our justice system.

The Court has also continued to advance technologically, which in turn, improves access to the Court. We recently hired the Court's first Chief Information Officer, who has been busy reorganizing our technology departments and implementing new project management tools. We are proud to report the implementation of an electronic filing system, perhaps our most significant recent technological advancement. In addition to being of great convenience to attorneys throughout the state, e-filing enables a litigant in Monroe or Shreveport to access the Court just as quickly as a litigant in New Orleans, promoting efficiency and streamlining public access to the Supreme Court.

In September of 2012, the Court hosted the annual Southern Region High Court Conference, an impressive gathering of judges and justices from the high courts of almost a dozen Southern states and Puerto Rico. We also began the commemoration of the Court's bicentennial anniversary, which culminated in a ceremony on March 1, 2013. In recognition of the upcoming bicentennial, we held oral arguments in the Sala Capitular of the Cabildo in the New Orleans French Quarter, one of the Court's original homes nearly two centuries ago. By celebrating our past, we may embrace the future with clarity and pride in our judicial system.

I have the distinct pleasure of submit-

ting to the Supreme Court of Louisiana, to the Board of Governors of the Louisiana State Bar Association, to the citizens of Louisiana, and to other interested parties the Annual Report of the Supreme Court of Louisiana for 2012, including the reports of the Judicial Council, the Judicial Administrator's Office, the Clerk of Court, the Law Library of Louisiana, the Louisiana Judicial College and the Judiciary Commission of Louisiana, as well as state judiciary statistics. The report also includes information from the Committee on Bar Admissions and the Louisiana Attorney Disciplinary Board, entities that operate under the auspices of the Supreme Court.

I would like to thank the many judges, attorneys and citizens who have assisted the justices this year. We applaud all those involved in our continuing efforts to improve the judicial administration system. As we reflect on our progress in 2012, we must be mindful of the exciting possibilities in the upcoming year.

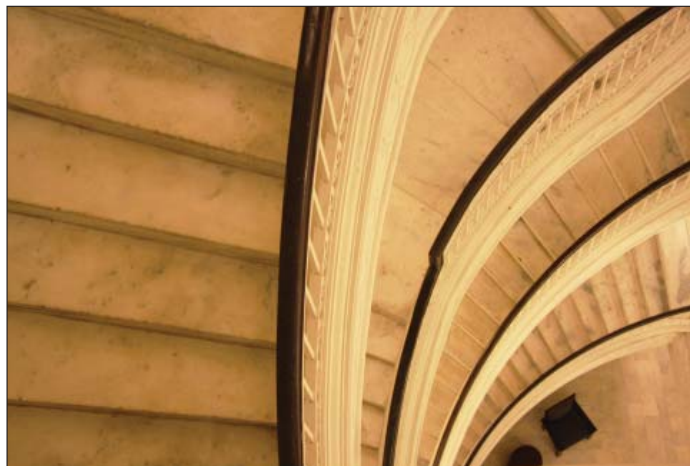


Bernette Joshua Johnson
Chief Justice
Louisiana Supreme Court



2012: SUPPORTING THE JUDICIARY

This section highlights initiatives of the Judicial Administrator's Office, the managerial arm of the Louisiana Supreme Court which serves as staffing and fiscal agent for the Judicial Council and court-appointed task forces and committees. This section also includes information about the Law Library, Judicial College, Bar Admissions, Clerk of Court's Office, Attorney Disciplinary Board and the Judiciary Commission.



CHILDREN AND FAMILIES

The Court Improvement Program (CIP) administers federal grants to provide research, evaluation, training and technical assistance for improving the adjudication of child abuse and neglect cases. This year CIP programming focused on the statewide system of representation in child protection cases, the role of courts in family engagement and child safety decision-making and disproportionate minority representation.

The Families in Need of Services Assistance Program (FINS-AP) provides fiscal and programmatic oversight of funds allocated to support statutorily mandated pre-court diversion, intervention and case management services for alleged status offenders and their families. 55 Informal FINS offices operate across all 42 judicial districts, providing voluntary diversion services to prevent delinquency and strengthen children and their families.

The Court Appointed Special Advocate Assistance Program (CASA-AP) administers federal and state funds as appropriated annually to support local CASA services which promote timely placement of foster children in permanent, safe and stable homes. In 2012, 17 CASA programs serving courts in 32 judicial districts across Louisiana assisted 3,201 abused and neglected children, and more than 1,100 CASA children were placed in permanent homes.

The Integrated Juvenile Justice Information System (IJJIS), providing courts exercising juvenile jurisdiction with enhanced case management and data collection capabilities, is fully operational in 2 juvenile courts and deployed in part in other jurisdictions. Data system improvements and gradual statewide implementation are planned, subject to availability of funding.

DRUG COURTS

Drug courts combine intensive substance abuse treatment with rigorous court oversight, community supervision, and frequent drug testing to ensure program accountability and the best outcomes for offenders with substance abuse problems. The Supreme Court Drug Court Office (SCDCO) is the fiscal agent for funds allocated to local drug court programs throughout the state.

Drug court programs provide both economic and non-economic benefits to communities. They reduce drug dependency among nonviolent criminal offenders, help restore families destroyed by addiction and assist clients in becoming productive members of society. By helping to reduce recidivism among non-violent criminal offenders, drug courts also significantly reduce the costs associated with incarceration.

- In 2012, Louisiana's 29 adult drug courts, 16 juvenile drug courts and two family preservation courts spent almost \$16 million in state and federal funds for drug testing, treatment and supervision of an average of 2,779 clients per month.

- Also in 2012, the SCDCO began oversight of 4 DWI court programs, providing both fiscal and programmatic monitoring. These 4 DWI courts spent \$428,264 to provide similar services to an average of 199 clients per month.

COURT MANAGEMENT INFORMATION SYSTEMS & LOUISIANA PROTECTIVE ORDER REGISTRY

Court Management Information Systems (CMIS) received 342,426 criminal records and 764,309 traffic records containing filing, disposition and sentencing information during 2012. The Criminal Records Project

sends final dispositions to the Department of Public Safety for inclusion in a computerized criminal history database; 39,800 records were posted by the end of 2012. CMIS posted 21,883 qualifying felony disposition records to the FBI National Instant Check System database. CMIS receives criminal data from 63 of 64 district courts.

The Traffic Records Project sends final dispositions to the Office of Motor Vehicles for inclusion in the state driver's records; 232,386 records were posted by the end of 2012. CMIS receives traffic data from 52 District Courts, 13 City Courts and 5 Mayor's Courts.

- CMIS dispersed \$121,122.00 in Federal and CMIS grants to District Court Clerks of Court offices for the acquisition and installation of criminal case management systems to report criminal filing and disposition data.

The Louisiana Protective Order Registry (LPOR), a statewide repository of court orders issued to prohibit domestic abuse and dating violence, as well as aid law enforcement, prosecutors and the courts in handling such matters, was established by legislative act in 1997 (La. R.S. 46:2136.2).

- In 2012, the registry received and entered 20,874 orders from courts across the state. Of these, 15,258 (73%) were civil orders and 5,616 (27%) were criminal orders. From the pilot phase of the project through the close of 2012, the registry received and entered a total of 275,102 orders. Of these, 207,732 (76%) were civil orders and 67,370 (24%) were criminal orders.

- Certain qualifying records from the registry are transmitted to the FBI's National Crime Information Center (NCIC) and their National Instant Criminal Background Check System (NICS). As of year's end, 171,809 Louisiana orders had been trans-

LOUISIANA SUPREME COURT ACCOMPLISHMENTS 2012

mitted to NCIC since the start up of the program. This included 17,474 qualifying orders transmitted during 2012.

- Also during 2012, registry on-call staff responded to 148 requests for order verification submitted by examiners with the FBI's National Instant Background Check System (NICS). This federal program is designed to prevent the sale of firearms, ammunition and explosives to those who are prohibited, including individuals who are the subject of a qualifying domestic violence restraining order.

COMMUNITY RELATIONS

2012 was a busy year of community outreach initiatives:

- The Supreme Court hosted the National Center for State Courts 2012 Southern Region High Court Conference which involved coordinating a 3-day conference for chief justices and chief court administrators from 10 southern states and Puerto Rico.
- The Supreme Court was selected by the Open World Leadership Center to host a delegation of judges and lawyers from Kazakhstan in October 2012. Judicial Administrator Timothy Averill served as the professional liaison, introducing the delegation to state and federal courts, law-related agencies and law firms. The Community Relations Department guided all cultural activities during the week-long program.
- With the Court's bicentennial imminent in 2013, the Community Relations Department worked with Justice Greg G. Guidry, the Bicentennial Committee Chair, and the Law Library in planning a calendar of bicentennial activities leading up to the March 1, 2013 anniversary. The Supreme Court sat at the Cabildo, its former home in May 2012 and "rode the circuit" at Northwestern State University by holding court in Natchitoches, Louisiana, another former Supreme Court venue.
- The Community Relations Department conducted 32 court tours involving nearly 900 court visitors.

NEW JUDGESHIPS

In 2012 there were no new judgeships.

LAW LIBRARY

The Law Library of Louisiana sponsored two free CLE programs during 2012. The first program, *Who Owns the Law?* - discussed the contradiction of state and federal law being in the public domain. The Law Library sponsored a second program in the spring, entitled *Louisiana's Greatest Statesman: Francis R. T. Nicholls Remembered a Century Later* - which discussed Chief Justice Nicholls' life and times. These programs were free and open to the bar and the public.

- The Law Library continued to monitor customer reference statistics in 2012, with a total of 11,723 customer questions received via telephone, email and in person.

- The Law Library has added hundreds of electronic federal government documents to the collection, including congressional hearings, congressional reports, treaties and agency reports.

- The Law Library's collection of books and other materials is continually updated. In 2012, the library added 1,214 new titles, 2,514 new volumes and 2,384 pieces of microfiche.

- The Law Library revised its estimate of total volumes held to 150,000.

- The Law Library answered 1,407 letters from prisoners requesting photocopies of statutes and cases.

JUDICIAL COLLEGE

On September 20, 2011, the Supreme Court, upon the recommendation of the College Board, adopted a set of By-Laws to govern the Judicial College which became effective on January 1, 2012.

- The By-Laws expanded the Board to seventeen (17) voting members: Two Associate Justices appointed by the Supreme Court to serve at the pleasure of the Supreme Court, nine (9) members appointed by the Supreme Court and two (2) appointments from each of the participating judicial associations. Each member is appointed for a term of three years that can be renewed once. The By-Laws also provide for ex-officio members who include the Executive Counsel of the Governor, a Senator and a Representative, the President of the Louisiana State Bar Association and the Presidents of the participating judicial associations.

- The By-Laws also created an Executive Committee of officers elected by the Board for a term of one year and provided for a rotation of officers, with a new treasurer elected each year. The day to day operations of the Board are managed by the Executive Director and staff hired by the Supreme Court. The Supreme Court Order adopting these By-Laws was signed by the Honorable Jeffrey P. Victory, Associate Justice, on October 5, 2011.

- Judge Madeleine Landrieu served as President, Judge Guy Holdridge as Vice President, Judge John Michael Guidry as Secretary and Judge Ricky Wicker as Treasurer.
- Over 450 members of the judiciary took part in Judicial College educational sessions.

BAR ADMISSIONS

The bar admissions system is administered by the Committee on Bar Admissions, 15 active members of the Louisiana State Bar

Association appointed by the Supreme Court of Louisiana.

- In 2012 the Committee received and processed 1,176 bar examination applications, 387 law student registration forms, 29 A.D.A. requests, 17 equivalency applications and 10 in-house counsel applications.

- Members of the Committee developed, and with the assistance of more than 300 volunteer graders, scored test papers for 319 applicants who sat for the examination administered in February and 755 applicants who sat for the examination administered in July. The pass rate was 63.01% in February and 61.32% in July.

- In carrying out its duty to inquire into the qualifications of applicants to the bar, including whether each applicant possesses the good moral character and fitness to practice law, the Committee reviewed information, conducted investigations and made determinations as to each applicant. In addition to all other information, the 2012 review included information revealed through mandatory state and federal criminal background checks.

- The Committee participated in 16 Commissioner hearings, argued 4 matters before the Court, recommended conditional admission for 9 applicants and recommended that 15 applicants be denied admission.

ATTORNEY DISCIPLINARY BOARD

With the end of 2012, the Louisiana Attorney Disciplinary Board (LADB) marked the approach of its 23rd year of operations as the attorney regulatory arm of the Louisiana Supreme Court that is charged with the administration of the attorney discipline and disability system in Louisiana.

- The Board completed another year of educational outreach to solo and small firm practitioners by sponsoring free continuing legal education seminars across Louisiana. In addition, the Office of Disciplinary Counsel (ODC) has served as lecturers in over 40 ethics presentations for the LADB, the Louisiana State Bar Association (LSBA) and other local or specialty bar associations in the state.

- In furtherance of the goal of reducing violations, the Board and the Disciplinary Counsel have begun visits to each of Louisiana's four law schools to enlist their aid in developing instructional opportunities which address common ethical complaints by clients.

- The Office of Disciplinary Counsel reported 3,196 written complaints received during 2012. Of those, 420 were found to reflect minor violations warranting a referral to the LSBA for diversion resolution, a process which on many occasions includes

For the *Guide to Louisiana Courts*, a directory of judges, clerks of court and court administrators, please see our electronic annual report at www.lasc.org/press_room/annual_reports/default.asp.

the successful completion of Ethics School. Approximately 1,451 complaints were declined for investigation. Finally, 1,325 written complaints were opened for full disciplinary investigation.

- In 2012, the Supreme Court amended Rule XIX to allow the ODC greater discretion in the screening of written complaints. The result has been an increase in successful resolutions of minor complaints and a corresponding decrease in the number of formal investigations required.

- As the year 2012 came to a close, the LADB and the ODC turned their attention to the growing number of aging active lawyers in Louisiana's legal profession, and the issues they present now, and in the future. Over 49% of the state bar membership is over 50 years old; and more than 14% are over age 65. An aging bar will bring challenges which must be addressed so as to protect the public while preserving the dignity and respect earned by these practitioners through years of dedicated service.

CLERK OF COURT

In 2012, 2,769 cases were filed, down from 2,852 cases in 2011. The Supreme Court disposed of 3,181 cases in 2012, up about 9% from the 2,916 disposed of in 2011. The clearance rate for 2012 was 115%. Among key responsibilities of the Clerk of Court Office in 2012, in addition to the processing of all incoming and out-going filings and dispositions, were:

- Overseeing courthouse maintenance and improvements. Completed the Hazard Mitigation Basement Water Proofing contract which was awarded in 2011.
- Implementing voluntary e-filing, statewide on August 1, 2012.
- Admitting 646 new attorneys to the practice of law, down 14 per cent from the 746 admitted in 2011.
- Issuing Certificates of Good Standing. The demand for issuance of Certificates of Good Standing continues to fall. In 2010 there were 4,978 certificates issued, then in 2011 the requests dropped to 4,888 and in 2012 only 4,549 certificates were issued.
- Processing and maintaining minute book entries and orders. The number of minute book entries increased from 2,291 in 2011 to 2,364 in 2012. Likewise, orders increased from 2,059 in 2011 to 2,220 in 2012. These orders are primarily orders of appointment of judges to sit in lower courts and do not include orders relating to cases before the Court.

- Managing logistics for 221 events hosted by the Court. These events included Court conferences, oral argument days, Judiciary Commission hearings, and other meetings.

JUDICIARY COMMISSION

The Judiciary Commission of Louisiana received and docketed 537 complaints against judges and justices of the peace in 2012. Additionally, 377 prior complaints were pending as of January 1, 2012. In addition to complaints, the Commission's Office of Special Counsel received and responded to 305 requests for information.

- Of the 537 complaints filed and docketed in 2012, 378 were screened out as not within the jurisdiction of the Commission, or failing to allege facts implicating a possible violation of the Code of Judicial Conduct. The remaining 159 cases were reviewed to consider the need for investigation. The Commission authorized in-depth investigations in 109 cases during 2012.

- In 2012, the Commission filed formal charges against five judges and four justices of the peace. Formal hearings before a randomly appointed hearing officer were scheduled in seven cases and conducted in five cases. Motions to dispense with a hearing officer were granted in two cases in which stipulations were reached. Two justices of the peace resigned after formal charges were brought against them.

- In 2012, the Commission submitted four cases recommending discipline to the Supreme Court. Three of these involved a failure to file financial disclosure statements required under Supreme Court Rule 39. The Commission initiated contempt proceedings in the Supreme Court against

two justices of the peace who failed to pay fines previously imposed by the Court for Rule 39 violations. The Commission concurred in requests by two justices of the peace to be placed on interim disqualification pending further proceedings.

- Also during 2012, one judge personally appeared before the Commission for questioning after a hearing before a hearing officer. One judge appeared before the Commission's Cases Under Advisement Committee.

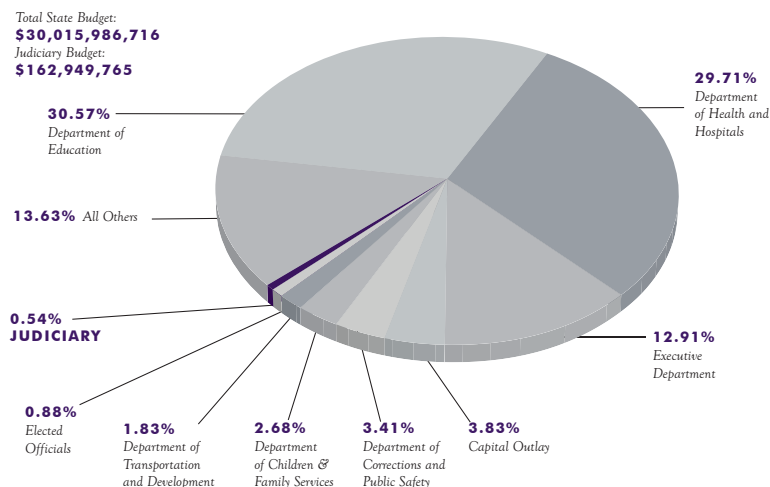
- In 2012, one judge and one justice of the peace were publicly censured by the Supreme Court. The Supreme Court fined three justices of the peace for failure to file financial disclosure statements required under Supreme Court Rule 39. Two justices of the peace were held in contempt for failure to pay fines previously imposed. Two justices of the peace were disqualified from exercising judicial functions pending further proceedings.

- As of December 31, 2012, there was one case pending before the Supreme Court. The Commission had 295 cases pending as of December 31, 2012, having disposed of 619 cases in 2012.

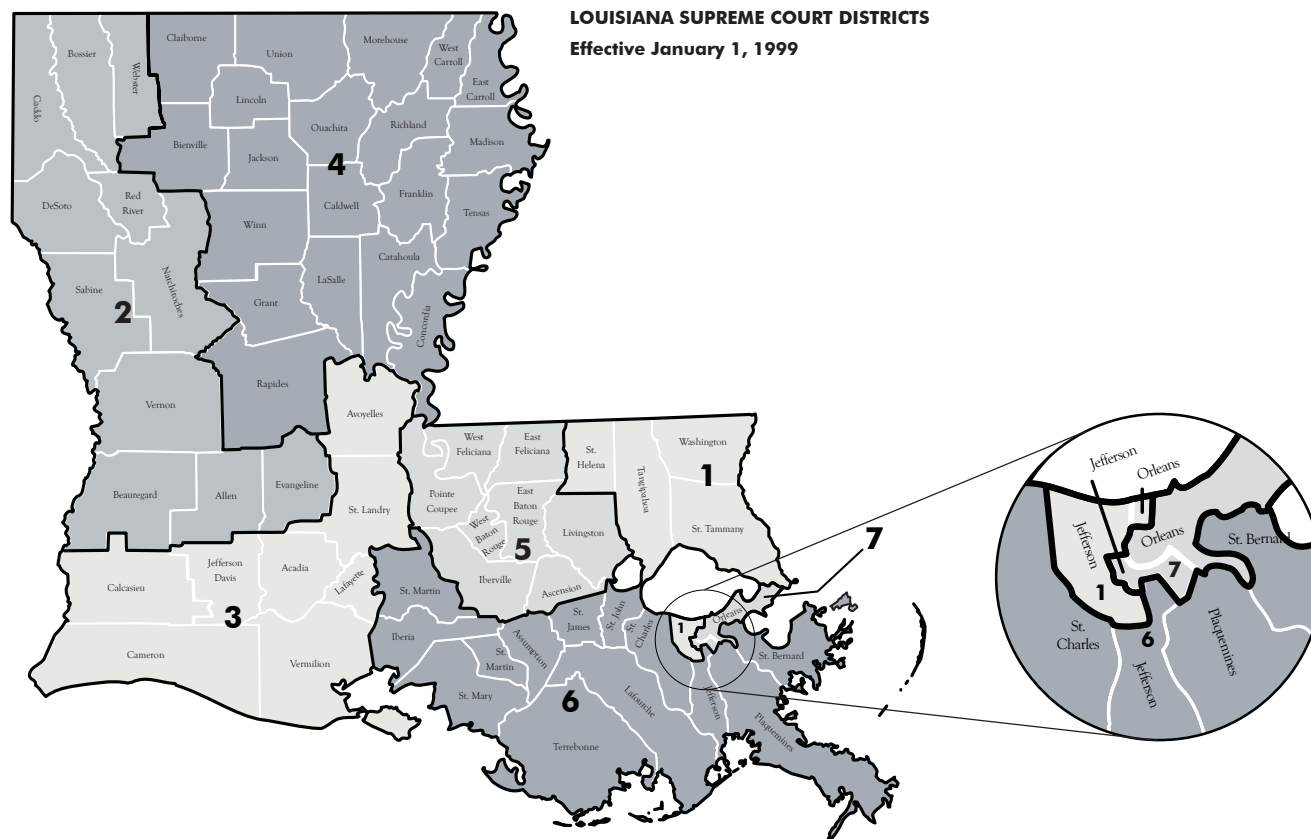
JUDICIAL BUDGET

Louisiana does not have a unified state court funding system. Operations of district, parish and city courts are primarily funded by local governments. An annual legislative appropriation funds the operations of the Louisiana Supreme Court, the five circuit courts of appeal judges and the district court judges, including the family and juvenile courts. The state also funds a portion of the salaries of parish and city court judges, and the compensation of retired and ad hoc judges. In 2012, 0.54% of the state's general fund was appropriated to the budget of the state judiciary.

LOUISIANA STATE BUDGET 2012-2013



A map of Louisiana showing its 77 parishes. Each parish is labeled with its name and a number. The map is color-coded: white for parishes 1-10, 12, 15, 16, 18, 21, 22, 23, 24, 25, 27, 28, 30, 31, 32, 34, 35, 36, 38, 39, 40, 41, 42, 43, 44, 45, 46, 47, 48, 49, 50, 51, 52, 53, 54, 55, 56, 57, 58, 59, 60, 61, 62, 63, 64, 65, 66, 67, 68, 69, 70, 71, 72, 73, 74, 75, 76, 77; light gray for parishes 11, 13, 14, 17, 19, 20, 26, 29, 33, 37, 42, 43, 44, 45, 46, 47, 48, 49, 50, 51, 52, 53, 54, 55, 56, 57, 58, 59, 60, 61, 62, 63, 64, 65, 66, 67, 68, 69, 70, 71, 72, 73, 74, 75, 76, 77; and dark gray for parishes 1, 2, 3, 4, 5, 6, 7, 8, 9, 10, 11, 12, 13, 14, 15, 16, 17, 18, 19, 20, 21, 22, 23, 24, 25, 26, 27, 28, 29, 30, 31, 32, 33, 34, 35, 36, 37, 38, 39, 40, 41, 42, 43, 44, 45, 46, 47, 48, 49, 50, 51, 52, 53, 54, 55, 56, 57, 58, 59, 60, 61, 62, 63, 64, 65, 66, 67, 68, 69, 70, 71, 72, 73, 74, 75, 76, 77.



***Districts 1, 6 & 7 Detail:**

Jefferson Parish Precincts in the First Louisiana Supreme Court District are 1-H through 9-H; 1-K through 35-K; 1 through 46; 51 through 108; 115 through 138; 150 through 155; 157A; 157B; 158; 170; 186; 198 and 199.

Jefferson Parish Precincts in the Sixth Louisiana Supreme Court District are 1-G1; 1-LA, 1-LB; 2-L; 182 through 185; 189 through 197; and 246A through 250.

Jefferson Parish Precincts in the Seventh Louisiana Supreme Court District are 1-G; 2-G through 11-G; 1-W through 9-W; 156; 171 through 181; 187; 188; 210 through 217; and 225 through 238.

Orleans Parish Precincts in the First Louisiana Supreme Court District are 3-20; 4-8 through 4-11; 4-14 through 4-23; 5-13 through 5-18; and 17-17 through 17-21.

The remainder of Orleans Parish Precincts are in the Seventh Louisiana Supreme Court District.

BEHIND THE COURTS' SUCCESS

Dozens of people, working together, have made the accomplishments of 2012 possible. Some of them are Court staff, some are members of councils and commissions. Their efforts have enabled the progress of the Louisiana court system and of justice in the State.

MEMBERSHIP OF THE JUDICIAL COUNCIL

Hon. Catherine D. Kimball, Chair
Chief Justice, Supreme Court of Louisiana
 Hon. Bernette J. Johnson
Justice, Supreme Court of Louisiana
 Honorable John Michael Guidry
representing Conference of Court of Appeal Judges
 Honorable Billy Ezell
representing Conference of Court of Appeal Judges
 Honorable Tiffany Chase
representing Louisiana District Judges Association
 Honorable Raymond S. Childress
representing Louisiana District Judges Association
 Honorable George Murray
representing Louisiana City Judges Association
 Honorable Grace Gasaway
representing Louisiana Council of Juvenile and Family Court Judges
 Honorable Paul Young
representing Louisiana Council of Juvenile and Family Court Judges
 Kim M. Boyle, Esq.
representing Louisiana State Bar Association
 Claude "T-Claude" Devall, Esq.
representing Young Lawyers Section of the LSBA
 Monica T. Surprenant, Esq.
representing Louisiana State Law Institute
 Honorable Dan Claitor
State Senator
 Honorable Franklin Foil
State Representative
 Honorable Paul D. Connick, Jr.
representing Louisiana District Attorneys Association
 William F. Dodd, Esq.
representing the Louisiana State Bar Association
appointed by the Louisiana Supreme Court
 Honorable H. Lynn Jones, II
representing Louisiana Clerks of Court Association
 Mr. Fred Skelton
Citizen Representative

EX-OFFICIO MEMBERS OF JUDICIAL COUNCIL

Justice Jeffrey P. Victory
 Justice Marcus R. Clark
 Justice Jeannette Theriot Knoll
 Justice John L. Weimer
 Justice Greg G. Guidry

STAFF OF JUDICIAL COUNCIL

Timothy F. Averill, JD, MPA
Judicial Administrator
Supreme Court of Louisiana
 Scott Griffith, Esq.
Deputy Judicial Administrator
Supreme Court of Louisiana

STATISTICAL OVERVIEW

The statistical information in this section was compiled from data submitted to the Judicial Administrator's Office by the various courts of Louisiana during the calendar year 2012.

SUPREME COURT

In 2012, 2,769 cases were filed, slightly down from 2,852 cases in 2011. The Supreme Court disposed of 3,181 cases in 2012, up about 9% from the 2,916 disposed of in 2011. In 2012, the clearance rate was 115%.

COURTS OF APPEAL

In 2012, there were 7,303 filings in the Louisiana courts of appeal. The 2012 filings were 8.1% lower than those in 2011. In total 2,254 opinions were rendered during 2012, an increase of .9% as compared to 2011. The number of opinions rendered per judge totaled 58 in the First Circuit, 32 in the Second Circuit, 46 in the Third Circuit, 33 in the Fourth Circuit and 44 in the Fifth Circuit.

DISTRICT COURTS

During 2012, there were 750,530 filings in the district courts, a decrease of 37,139 filings compared with 2011 (a decrease of 4.7%). Juvenile filings decreased by 7.8% (a decrease of 2,215) over 2011 to 26,240; 2012 criminal filings decreased by 2.5% (a decrease of 4,022); civil filings decreased by 4.5% (a decrease of 6,361); and traffic court filings decreased by 5.3% (a decrease of 24,541).

CITY AND PARISH COURTS

Filings in Louisiana City and Parish Courts decreased by 7.5%, from 972,559 filings in 2011 to 899,940 filings in 2012.

STAFF OF THE JUDICIAL ADMINISTRATOR'S OFFICE



Timothy F. Averill, JD, MPA
Judicial Administrator

Lauren McHugh Rocha, JD
General Counsel

DEPUTY JUDICIAL ADMINISTRATORS

Randy Certoma, CPA
 Rose Marie DiVincenti, CCR, RPR
 Clare Fiasconaro, JD
 Scott Griffith, JD, MPA
 Kären Hallstrom, JD, MSW
 Kerry Lentini, JD
 Anna Paxton, CCP
 Darryl M. Schultz
 Terence Sims, CPA, CFE
 Valerie Willard, JD
 Richard Williams, JD

SUPREME COURT OF LOUISIANA *Two Year Trend in Activity*

	2011 Total	2012 Total	2012 Civil	2012 Criminal
APPEALS				
Filed	10	10	5	5
Dismissed	2	0	0	0
Opinions Rendered				
With written opinions	6	6	1	5
Per curiams	2	3	1	2
WRITS				
Applications Filed (Except Prisoner Pro Se)	1,527	1,580	1,065	515
Prisoner Pro Se Writs	1,087	960	22	938
Granted	217	241	133	108
To be argued	69	63	49	14
With orders & transferred	148	178	84	94
Dismissed	18	8	4	4
Not Considered	44	67	53	14
Denied	2,380	2,678	912	1,766
Opinions Rendered	53	46	38	8
REHEARINGS				
Applied for	46	51	43	8
Granted	1	1	1	0
Denied/Dismissed	51	53	41	12
Opinions Rendered	0	0	0	0
ORIGINAL JURISDICTION				
Petitions Filed	228	219	219	0
Opinions Rendered	9	5	5	0
Other Actions	211	218	218	0
OTHER MATTERS				
Filed	0	0	0	0
Opinions Rendered	1	1	1	0
Other Actions	18	3	2	1
OTHER PER CURIAM OPINIONS RENDERED	226	273	221	52
TOTAL FILINGS	2,852	2,769	1,311	1,458
Per Justice	407	396	187	208
TOTAL OPINIONS RENDERED	70	57	44	13

OFFICE OF THE CLERK

John Tarlton Olivier, JD
Clerk of Court
 Rachel Edelman, JD
Chief Deputy Clerk of Court
 Robin Burras
Deputy Clerk—Front Office
 Carmen B. Young
Deputy Clerk—Opinions & Filings
 Eddie Gonzales
Deputy Clerk—Records Manager & Property Manager
 John White, CPA
Fiscal Manager
 Tommy M. Anderson
Director of Security

THE JUDICIARY COMMISSION OF LOUISIANA, CREATED IN 1968 BY AN AMENDMENT TO ARTICLE IX, CONSTITUTION OF 1921, IS CONTINUED IN EXISTENCE BY ARTICLE V, SECTION 25, CONSTITUTION OF 1974.

2012 JUDICIARY COMMISSION

Judge Sharon I. Marchman, *Chair*
 Judge Anthony J. Marabella, *Vice Chair*
 Harold M. Block, Esq.
 Judge J. Jay Caraway
 Mrs. Len G. Ciaravella
 Jerry Edwards, Esq.
 William W. Hall, Esq.
 Mrs. Carol LeBlanc
 Mrs. Nannette M. Smith

STAFF OF THE JUDICIARY COMMISSION

Timothy F. Averill, JD, MPA
Chief Executive Officer
 Clare Fiasconaro, JD
Commission Legal Counsel

STAFF OF THE OFFICE OF SPECIAL COUNSEL

Mary Whitney, JD, *Special Counsel*

LOUISIANA ATTORNEY DISCIPLINARY BOARD

Dow M. Edwards, *Chair*
 John T. Cox, Jr., *Vice-Chair*
 Frank A. Fertitta (LSBA Member)
 Carl A. Butler
 Stephen F. Chiccarelli
 George L. Crain
 Jamie E. Fontenot
 Ralph K. Lee, Jr.
 Kim Leija
 Tara L. Mason
 Edwin G. Preis, Jr.
 R. Lewis Smith, Jr.
 Linda P. Spain
 R. Steven Tew

The Supreme Court has exclusive original jurisdiction in cases involving disciplinary actions against lawyers and judges, appellate jurisdiction in capital cases where the death penalty has been imposed and in cases in which a law or ordinance has been declared unconstitutional, as well as supervisory jurisdiction over all courts.

LOUISIANA COURTS OF APPEAL *Two Year Trend in Activity***THE LAW LIBRARY OF LOUISIANA STAFF**

Georgia Chadwick, MLIS
Director, Law Library of Louisiana
 Marie Erickson, JD, MLS
Head of Public Services
 Miriam Childs, MLS
Head of Technical Services/Documents Librarian
 Katherine Nachod, MLS
Reference/Electronic Resources Librarian
 Jennifer Creevy, MLS
Acquisitions/Serials Librarian
 Tara Lombardi, MLS
Reference/Collection Development Librarian
 Ruth Mahoney
Public Services Library Associate
 Daphne Tassin
Technical Services Library Associate
 Gail Bragg
Administrative Assistant

COMMITTEE ON BAR ADMISSIONS

Hon. S. Maurice Hicks, Jr.
Chairman
 Lawrence J. Centola, Jr.
Director of Character & Fitness
 Robert J. David, Jr.
Director of Accommodations
 J. Patrick Beauchamp
Director of Testing
 C. Peck Hayne
Examiner—Civil Code I
 Carlton “Trey” Jones, III
Examiner—Civil Code II
 Leland David Cromwell
Examiner—Civil Code III
 Robert E. Landry
Examiner—Louisiana Code of Civil Procedure
 Jennifer W. Hilburn
Examiner—Torts
 Ronald J. White
Examiner—Business Entities & Negotiable Instruments
 DeWayne L. Williams
Examiner—Constitutional Law
 Todd S. Clemons
Examiner—Criminal Law, Procedure & Evidence
 S. Christopher Slatten
Examiner—Federal Jurisdiction & Procedure
 Hon. Brian A. Jackson
Character and Fitness Panel Member
 Hon. Bernadette G. D’Souza
Character and Fitness Panel Member
 Elizabeth S. Schell
Executive Director
 Monique R. Drake
Character and Fitness Attorney
 Megan F. O’Cain
Assistant Attorney for Character and Fitness
 Denise S. Leeper
Bar Admissions Administrator
 Rhonda Lorig
Bar Admissions Assistant
 Heather Schumacher
Paralegal

	2011 Total	2012 Total	2012 Civil	2012 Criminal
FIRST CIRCUIT				
Appeals Filed	906	859	612	247
Motions Filed	40	45	38	7
Writs Filed (except Pro Se)	651	579	431	148
Writs Refused*	473	481	355	126
Writs Granted	156	134	104	30
Pro Se Writs Filed	852	677	123	554
Pro Se Writs Refused*	842	691	109	582
Pro Se Writs Granted	84	60	13	47
Appeals Dismissed/Transferred	125	120	103	17
Consolidated Opinions	21	26	26	0
Opinions Rendered **	663	701	487	214
Rehearings Acted Upon***	137	159	132	27
Appeals Pending	540	557	404	153
Argued But Not Decided	46	64	60	4
To Be Argued	494	493	344	149
Opinions Rendered Per Judge by Circuit	55	58	41	18
SECOND CIRCUIT				
Appeals Filed	356	358	209	149
Motions Filed	15	6	1	5
Writs Filed (except Pro Se)	178	204	139	65
Writs Refused*	126	129	91	38
Writs Granted	50	63	36	27
Pro Se Writs Filed	342	352	14	338
Pro Se Writs Refused*	320	264	7	257
Pro Se Writs Granted	32	73	5	68
Appeals Dismissed/Transferred	44	31	26	5
Consolidated Opinions	30	13	9	4
Opinions Rendered **	303	285	167	118
Rehearings Acted Upon***	60	52	33	19
Appeals Pending	141	176	94	82
Argued But Not Decided	27	40	20	20
To Be Argued	114	136	74	62
Opinions Rendered Per Judge by Circuit	34	32	19	13
THIRD CIRCUIT				
Appeals Filed	651	596	406	190
Motions Filed	33	24	14	10
Writs Filed (except Pro Se)	385	388	277	111
Writs Refused*	290	330	237	93
Writs Granted	76	73	45	28
Pro Se Writs Filed	529	468	24	444
Pro Se Writs Refused*	418	473	23	450
Pro Se Writs Granted	62	70	8	62
Appeals Dismissed/Transferred	103	65	48	17
Consolidated Opinions	0	4	4	0
Opinions Rendered **	543	549	378	171
Rehearings Acted Upon***	129	107	88	19
Appeals Pending	289	295	189	106
Argued But Not Decided	27	21	13	8
To Be Argued	262	274	176	98
Opinions Rendered Per Judge by Circuit	45	46	32	14

LOUISIANA COURTS OF APPEAL Two Year Trend in Activity

	2011 Total	2012 Total	2012 Civil	2012 Criminal
FOURTH CIRCUIT				
Appeals Filed	526	518	341	177
Motions Filed	19	23	21	2
Writs Filed (except Pro Se)	854	784	407	377
Writs Refused*	621	593	336	257
Writs Granted	231	191	75	116
Pro Se Writs Filed	429	460	9	451
Pro Se Writs Refused*	298	261	2	259
Pro Se Writs Granted	140	217	6	211
Appeals Dismissed/Transferred	65	64	47	17
Consolidated Opinions	32	41	37	4
Opinions Rendered **	372	391	249	142
Rehearings Acted Upon***	102	94	74	20
Appeals Pending	296	341	205	136
Argued But Not Decided	47	81	60	21
To Be Argued	249	260	145	115
Opinions Rendered Per Judge by Circuit	31	33	21	12
FIFTH CIRCUIT				
Appeals Filed	399	358	211	147
Motions Filed	17	17	6	11
Writs Filed (except Pro Se)	303	241	147	94
Writs Refused*	247	207	122	85
Writs Granted	56	45	28	17
Pro Se Writs Filed	464	346	11	335
Pro Se Writs Refused*	549	295	9	286
Pro Se Writs Granted	127	52	2	50
Appeals Dismissed/Transferred	41	40	33	7
Consolidated Opinions	10	0	0	0
Opinions Rendered **	352	328	168	160
Rehearings Acted Upon***	80	71	39	32
Appeals Pending	218	205	134	71
Argued But Not Decided	9	3	2	1
To Be Argued	209	202	132	70
Opinions Rendered Per Judge by Circuit	47	44	22	21
TOTAL FOR ALL CIRCUITS				
Appeals Filed	2,838	2,689	1,779	910
Motions Filed	124	115	80	35
Writs Filed (except Pro Se)	2,371	2,196	1,401	795
Writs Refused*	1,757	1,740	1,141	599
Writs Granted	569	506	288	218
Pro Se Writs Filed	2,616	2,303	181	2,122
Pro Se Writs Refused*	2,427	1,984	150	1,834
Pro Se Writs Granted	445	472	34	438
Appeals Dismissed/Transferred	378	320	257	63
Consolidated Opinions	93	84	76	8
Opinions Rendered **	2,233	2,254	1,449	805
Rehearings Acted Upon***	508	483	366	117
Appeals Pending	1,484	1,574	1,026	548
Argued But Not Decided	156	209	155	54
To Be Argued	1,328	1,365	871	494
Opinions Rendered Per Judge	43	43	28	15

**LOUISIANA JUDICIAL COLLEGE
BOARD OF GOVERNORS**

CHAIRMEN

Justice Jeffrey P. Victory
Supreme Court of Louisiana
Justice John L. Weimer
Supreme Court of Louisiana

MEMBERS

Judge Roland Belsome
Court of Appeal, 4th Circuit
Judge Fredericka Wicker
Court of Appeal, 5th Circuit
Judge Alvin Turner
23rd Judicial District Court
Judge John Michael Guidry
Court of Appeal, 1st Circuit
Judge William J. Crain
22nd Judicial District Court
Judge Benedict J. Willard
Criminal District Court
Judge Michael Pitman
1st Judicial District Court
Judge Phillip Terrell
Pineville City Court
Judge M'elise Trahan
Crowley City Court
Judge D. Milton Moore
Conference of Court of Appeal Judges
Judge Madeleine Landrieu
Conference of Court of Appeal Judges
Judge Guy Holdridge
Louisiana District Judges Association
Judge Scott J. Crichton
Louisiana District Judges Association
Judge John B. Slattery
Louisiana City Judges Association
Judge Lynette Y. Feucht
Louisiana City Judges Association
Judge Patricia Koch
Louisiana Juvenile Judges Association
Judge Shonda Stone
Louisiana Juvenile Judges Association

EX-OFFICIO

Hon. Stephen Waguespack
Executive Counsel to the Governor
James J. Davidson, III
President, Louisiana State Bar Association
Walter Leger, III
(La. Representative)
Dan Claitor
(Senate Representative)
Judge Burrell J. Carter
Conference of Court of Appeal Judges
Judge James M. Cunningham
Louisiana City Judges Association

EXECUTIVE DIRECTOR

Cheney C. Joseph, Jr.
Baton Rouge
Phone (225) 578-8825
Fax (225) 578-8762

* Includes writs denied, writs not considered, writs dismissed and transferred

** Includes opinions on appeals, writs, rehearings & supplemental opinions

*** Includes rehearings on writs

The 5th Circuit calculation on opinions per judge is based upon 7.5 judges. The court did not have 8 Judges for the entire year.

LOUISIANA DISTRICT COURTS *Two Year Trend in Activity*

DISTRICT	PARISH	2011 Total Filed	2012 Juvenile Filed	2012 Civil Filed	2012 Criminal Filed	2012 ² Traffic Filed	2012 Total Filed	JURY TRIALS	
								Civil	Criminal
1	Caddo ¹	23,624	457	7,717	8,832	5,611	22,617	10	41
	District Totals:	23,624	457	7,717	8,832	5,611	22,617	10	41
2	Bienville	4,849	57	452	469	3,484	4,462	2	1
	Claiborne	4,568	178	368	550	2,543	3,639	0	2
	Jackson	1,891	423	450	585	436	1,894	0	2
	District Totals:	11,308	658	1,270	1,604	6,463	9,995	2	5
3	Lincoln	5,964	440	852	1,431	2,694	5,417	2	3
	Union	2,774	224	584	990	906	2,704	0	0
	District Totals:	8,738	664	1,436	2,421	3,600	8,121	2	3
4	Morehouse	9,285	256	615	1,305	6,709	8,885	1	6
	Ouachita	40,680	1,163	4,582	8,384	34,015	48,144	6	23
	District Totals:	49,965	1,419	5,197	9,689	40,724	57,029	7	29
5	Franklin	2,104	235	710	741	1,302	2,988	1	1
	Richland	4,071	181	525	1,614	4,508	6,828	1	2
	West Carroll	1,472	111	315	429	803	1,658	0	2
	District Totals:	7,647	527	1,550	2,784	6,613	11,474	2	5
6	East Carroll	3,110	104	200	374	2,126	2,804	0	0
	Madison	9,236	129	278	759	7,818	8,984	0	0
	Tensas	1,972	20	136	917	1,608	2,681	0	1
	District Totals:	14,318	253	614	2,050	11,552	14,469	0	1
7	Catahoula	2,002	32	292	791	1,202	2,317	0	0
	Concordia	3,142	176	594	1,458	823	3,051	0	0
	District Totals:	5,144	208	886	2,249	2,025	5,368	0	0
8	Winn	2,277	58	513	800	1,402	2,773	0	0
	District Totals:	2,277	58	513	800	1,402	2,773	0	0
9	Rapides	22,169	1,162	3,298	4,068	12,536	21,064	3	13
	District Totals:	22,169	1,162	3,298	4,068	12,536	21,064	3	13
10	Natchitoches	9,299	1,764	1,010	1,608	6,938	11,320	1	4
	District Totals:	9,299	1,764	1,010	1,608	6,938	11,320	1	4
11	Sabine	5,252	180	696	1,585	2,789	5,250	0	3
	District Totals:	5,252	180	696	1,585	2,789	5,250	0	3
12	Avoyelles	7,830	422	1,751	2,755	3,463	8,391	2	2
	District Totals:	7,830	422	1,751	2,755	3,463	8,391	2	2
13	Evangeline	7,611	907	934	1,379	4,476	7,696	0	3
	District Totals:	7,611	907	934	1,379	4,476	7,696	0	3
14	Calcasieu	30,248	1,565	5,758	12,692	5,390	25,405	11	13
	District Totals:	30,248	1,565	5,758	12,692	5,390	25,405	11	13
15	Acadia	7,077	263	1,434	1,396	3,116	6,209	1	4
	Lafayette	22,916	1,839	7,139	3,978	5,820	18,776	10	26
	Vermilion	7,177	272	1,608	2,019	2,951	6,850	5	10
	District Totals:	37,170	2,374	10,181	7,393	11,887	31,835	16	40
16	Iberia	13,916	116	1,906	2,325	8,669	13,016	4	8
	St. Martin	14,680	448	1,297	2,022	11,647	15,414	2	2
	St. Mary	7,818	630	1,481	2,347	2,198	6,656	3	4
	District Totals:	36,414	1,194	4,684	6,694	22,514	35,086	9	14
17	Lafourche	17,181	727	2,430	4,771	6,355	14,283	4	6
	District Totals:	17,181	727	2,430	4,771	6,355	14,283	4	6
18	Iberville	11,715	246	1,495	1,023	7,313	10,077	3	1
	Pointe Coupee	4,659	120	633	737	4,191	5,681	1	0
	West Baton Rouge	4,817	92	846	1,196	1,500	3,634	1	4
	District Totals:	21,191	458	2,974	2,956	13,004	19,392	5	5
19	East Baton Rouge ¹	52,770	0	12,158	11,045	34,560	57,763	37	45
	District Totals:	52,770	0	12,158	11,045	34,560	57,763	37	45
20	East Feliciana	4,127	200	1,014	711	1,559	3,484	0	6
	West Feliciana	1,352	26	285	532	378	1,221	2	4
	District Totals:	5,479	226	1,299	1,243	1,937	4,705	2	10

LOUISIANA DISTRICT COURTS Two Year Trend in Activity

DISTRICT	PARISH	2011 Total Filed	2012 Juvenile Filed	2012 Civil Filed	2012 Criminal Filed	2012 ² Traffic Filed	2012 Total Filed	JURY TRIALS	
								Civil	Criminal
21	Livingston	19,645	754	3,584	3,709	9,186	17,233	4	9
	St. Helena	3,961	59	298	724	1,476	2,557	1	0
	Tangipahoa	35,205	773	3,799	4,423	28,319	37,314	5	6
	District Totals:	58,811	1,586	7,681	8,856	38,981	57,104	10	15
22	St. Tammany	48,165	1,469	7,739	6,329	25,552	41,089	10	78
	Washington	5,665	461	1,161	1,164	2,993	5,779	0	28
	District Totals:	53,830	1,930	8,900	7,493	28,545	46,868	10	106
23	Ascension ¹	5,541	513	3,833	1,395	0	5,741	7	13
	Assumption	4,615	285	667	702	1,442	3,096	2	1
	St. James	5,642	310	792	877	2,469	4,448	1	0
	District Totals:	15,798	1,108	5,292	2,974	3,911	13,285	10	14
24	Jefferson ¹	20,058	0	12,547	6,906	0	19,453	21	75
	District Totals:	20,058	0	12,547	6,906	0	19,453	21	75
25	Plaquemines	4,831	82	775	1,416	2,544	4,817	0	2
	District Totals:	4,831	82	775	1,416	2,544	4,817	0	2
26	Bossier	16,009	1,613	2,988	5,782	5,911	16,294	2	8
	Webster	8,746	446	945	1,812	4,744	7,947	1	4
	District Totals:	24,755	2,059	3,933	7,594	10,655	24,241	3	12
27	St. Landry	40,107	742	2,632	2,663	26,480	32,517	8	17
	District Totals:	40,107	742	2,632	2,663	26,480	32,517	8	17
28	LaSalle	2,473	83	356	1,044	1,289	2,772	1	6
	District Totals:	2,473	83	356	1,044	1,289	2,772	1	6
29	St. Charles	35,096	547	1,785	1,737	31,195	35,264	2	4
	District Totals:	35,096	547	1,785	1,737	31,195	35,264	2	4
30	Vernon	11,834	310	1,222	1,599	8,239	11,370	2	3
	District Totals:	11,834	310	1,222	1,599	8,239	11,370	2	3
31	Jefferson Davis	17,255	116	929	874	11,795	13,714	2	3
	District Totals:	17,255	116	929	874	11,795	13,714	2	3
32	Terrebonne	31,403	664	3,081	4,329	22,160	30,234	7	19
	District Totals:	31,403	664	3,081	4,329	22,160	30,234	7	19
33	Allen	7,047	221	655	985	2,937	4,798	0	5
	District Totals:	7,047	221	655	985	2,937	4,798	0	5
34	St. Bernard	15,138	269	1,525	6,737	5,017	13,548	2	2
	District Totals:	15,138	269	1,525	6,737	5,017	13,548	2	2
35	Grant	4,223	274	465	866	2,892	4,497	0	2
	District Totals:	4,223	274	465	866	2,892	4,497	0	2
36	Beauregard	7,328	251	1,001	697	7,031	8,980	1	5
	District Totals:	7,328	251	1,001	697	7,031	8,980	1	5
37	Caldwell	2,196	74	357	795	605	1,831	0	1
	District Totals:	2,196	74	357	795	605	1,831	0	1
38	Cameron	2,703	28	165	618	996	1,807	1	0
	District Totals:	2,703	28	165	618	996	1,807	1	0
39	Red River	2,558	118	251	520	1,700	2,589	0	1
	District Totals:	2,558	118	251	520	1,700	2,589	0	1
40	St. John the Baptist ³	20,870	300	1,910	1,728	15,616	19,554	1	7
	District Totals:	20,870	300	1,910	1,728	15,616	19,554	1	7
42	DeSoto	13,784	255	985	1,177	8,456	10,873	0	3
	District Totals:	13,784	255	985	1,177	8,456	10,873	0	3
	Orleans Civil ¹	12,901	0	11,883	0	0	11,883	41	0
	Orleans Criminal ¹	7,035	0	0	4,495	0	4,495	0	190
	District Totals:	19,936	0	11,883	4,495	0	16,378	41	190
	Statewide Totals:	787,669	26,240	134,686	154,721	434,883	750,530	235	734

2012 Report of the Total Number of Awards and the Total Amount of Funds Distributed for Wrongful Conviction and Imprisonment^{*}

Total Number of Awards: 15 Total Amount Awarded: \$2,927,282.36 Total Amount of Funds Distributed, Including Previous Year Awards: \$1,476,920.67

1. Violations of Traffic, Misdemeanors, and/or Juvenile/Family Laws are Processed by Parish, City, and/or Juvenile/Family Courts. 2. DWI is included in the criminal totals beginning in 1990.
3. St. John Parish discovered they have been counting their traffic caseload incorrectly. Corrections were made to the numbers for 2011. *Pursuant to R.S. 15:572.8, Act 262, Regular Session 2007.

JUVENILE JUDICIAL ACTIVITY: FORMAL PROCESS – CALENDAR YEAR 2012

	CADD0				E. BATON ROUGE			
	Filings	Charges	Children ¹		Filings	Charges	Children ¹	
Formal FINS	399	403	398		38	114	38	
Juvenile Traffic	353	353	223		307	456	307	
Juvenile Delinquency	1,634	1,908	1,639		1,971	2,866	1,971	
Mental Incapacity to Proceed ²	0	0	0		3	8	3	
Interstate compact for Juveniles	0	0	0		0	0	0	
Contempt of Court	317	0	317		336	336	336	
Child in Need of Care Cases	148		152		101		155	
Voluntary Transfer of Custody	23		23		63		83	
Jud. Certification of Children for Adoption Cases	8		8		5		5	
Surrender of Parental Rights	6		0		88		79	
Adoption	60		60		66		77	
Child Support	710		0		0		0	
Mental Health	192		192		4		4	
Misdemeanor Prosecution of Adults/Other	0		0		1		0	
Minor Marriages	0		0		0		0	
Protection of Terminally Ill Children	0		0		0		0	
Domestic Abuse	181		0		0		0	
Other	19		19		2		2	
Subtotal	4,050	2,664	3,031		2,985	3,780	3,060	

FAMILY COURT FILINGS

EBR FAMILY COURT			
New Cases Filed	4,992	Payment Determination	1,974
Community Property	71	QDRO	112
Contempt State	1,938	Review (Non-Support)	249
Deferred Execution	625	Rule to Establish Medical Support	0
Deferred Sentencing	483	Rule to Set Arrears	241
Dismissals	188	Rules	6,407
Divorces	1,487	State Rules	747
DVC's	2,063	Stipulated Judgments	1,408
Ex-Parte Custody	80	Suspension Revocation	1
Income Assignments	1,104	UISA	515
Joint Custody	9	Disavowals	1
Modification	464	Annulments	0
Paternity	4		

1. The category of Children denotes the number of children listed in filed petitions for each case type.

2. Mental Incapacity to Proceed is a subset of the category of Delinquency. The event is enumerated separately as it is considered a significant delinquency event.

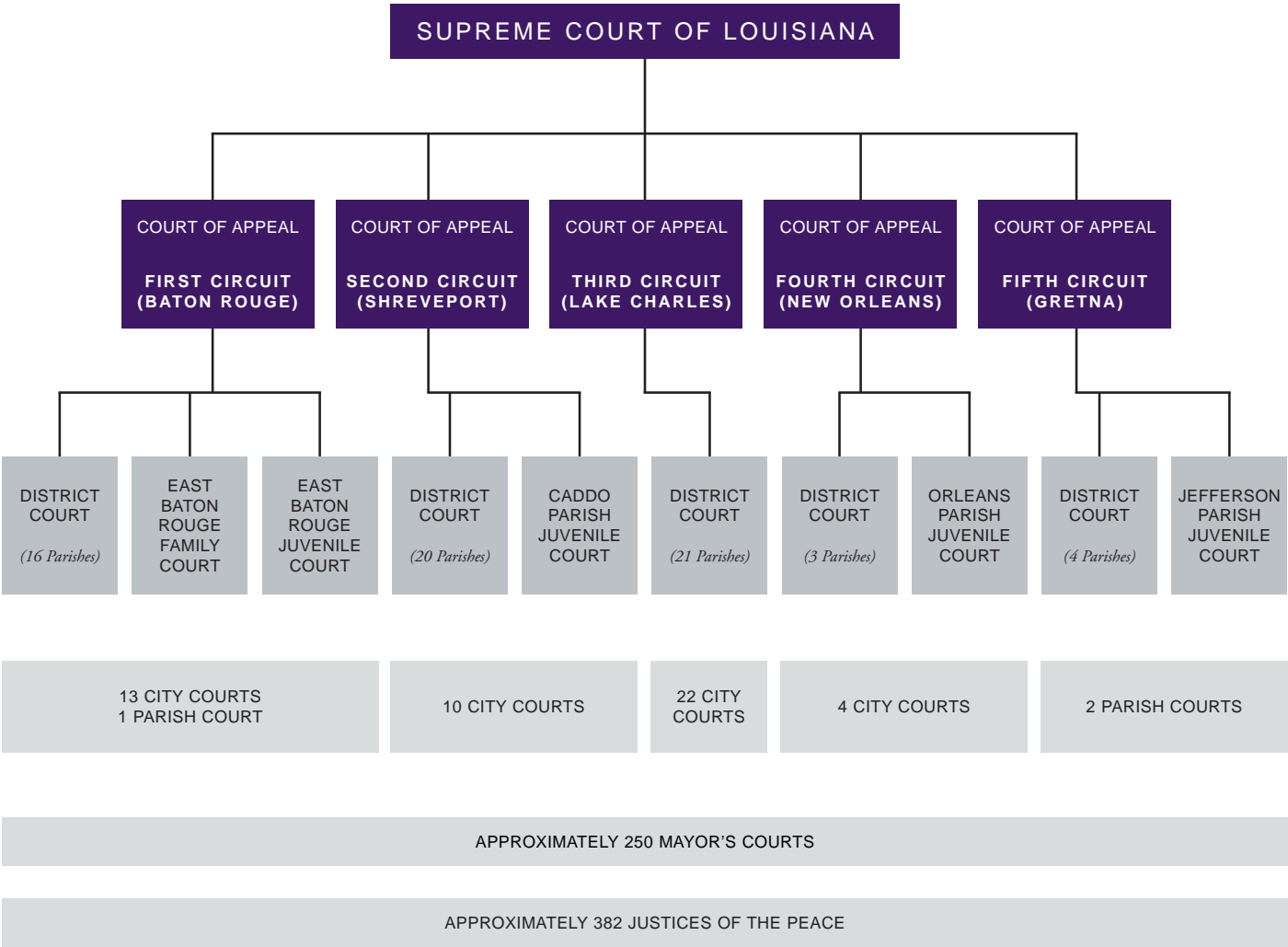
JEFFERSON			ORLEANS			GRAND TOTAL		
Filings	Charges	Children ¹	Filings	Charges	Children ¹	Filings	Charges	Children ¹
269	344	276	52	68	53	758	929	765
349	526	359	188	406	192	1,197	1,741	1,081
1,070	1,337	1,036	660	900	686	5,335	7,011	5,332
1	1	1	0	0	0	4	9	4
0	0	0	3	3	3	3	3	3
484	488	484	0	0	0	1,137	824	1,137
392		392	96		105	737		804
225		226	26		28	337		360
63		63	23		23	99		99
0		0	7		7	101		86
124		124	71		78	321		339
2,759		0	0		0	3,469		0
0		0	0		0	196		196
3		0	0		0	4		0
1		1	0		0	1		1
0		0	0		0	0		0
0		0	0		0	181		0
0		0	304		281	325		302
5,740	2,696	2,962	1,430	1,377	1,456	14,205	10,517	10,509

LOUISIANA CITY AND PARISH COURTS *Cases Processed Report Year 2012*

	Filed	Term.	Filed	Term.	Filed	Term.	Filed	Term.	Filed	Term.	Filed	Term.
CITY	CIVIL		CRIMINAL		TRAFFIC*		JUVENILE		TOTAL CASES		OTHER PROCEEDINGS**	
Abbeville	328	240	483	538	1,712	1,742	185	195	2,708	2,715	0	0
Alexandria	2,916	2,056	8,763	6,887	13,245	11,951	0	0	24,924	20,894	0	0
Ascension	458	262	3,875	3,626	14,878	14,212	156	343	19,367	18,443	0	0
Baker	411	366	797	622	7,278	5,552	0	0	8,486	6,540	0	0
Bastrop	729	601	1,195	1,059	1,790	1,649	30	23	3,744	3,332	599	0
Baton Rouge	11,699	11,638	27,888	28,837	111,939	111,819	0	0	151,526	152,294	45,172	58,524
Bogalusa	298	56	1,357	1,181	1,819	1,834	221	159	3,695	3,230	3,097	3,147
Bossier City	2,163	1,838	2,317	2,199	6,656	7,770	1,526	1,376	12,662	13,183	260	187
Breaux Bridge	570	507	689	344	653	316	111	122	2,023	1,289	126	265
Bunkie	83	85	194	194	1,279	1,279	87	87	1,643	1,645	0	0
Crowley	525	406	1,442	1,215	3,546	3,588	218	250	5,731	5,459	0	0
Denham Springs	1,737	1,695	1,848	3,928	16,757	16,170	506	539	20,848	22,332	166	188
Eunice	465	304	1,461	1,405	2,958	2,640	173	172	5,057	4,521	0	0
Franklin	402	406	956	477	1,530	1,359	167	159	3,055	2,401	139	74
Hammond	1,848	1,431	2,414	1,286	12,827	7,938	894	521	17,983	11,176	0	0
Houma	3,511	2,401	2,969	2,694	7,568	6,866	1,211	1,072	15,259	13,033	1,446	1,029
Jeanerette	170	268	555	513	3,943	3,694	79	80	4,747	4,555	0	0
Jeff. 1st Parish Ct.	1,834	3,328	4,511	14,046	59,180	98,404	0	0	65,525	115,778	0	0
Jeff. 2nd Parish Ct.	6,138	6,228	4,122	9,862	45,717	86,738	0	0	55,977	102,828	0	0
Jennings	556	437	915	432	1,346	1,380	37	35	2,854	2,284	0	0
Kaplan	71	65	335	291	530	551	60	60	996	967	0	0
Lafayette	3,598	3,500	6,040	6,980	27,686	29,732	568	623	37,892	40,835	610	610
Lake Charles	3,419	2,492	5,695	4,330	11,383	12,786	53	21	20,550	19,629	0	0
Leesville	230	65	882	435	2,549	1,873	54	22	3,715	2,395	0	0
Marksville	646	614	496	448	2,115	2,082	81	73	3,338	3,217	0	0
Minden	522	483	942	745	1,345	1,309	166	88	2,975	2,625	77	77
Monroe	4,119	2,693	7,324	4,117	13,960	9,165	423	208	25,826	16,183	0	0
Morgan City	563	440	886	1,082	1,289	1,379	163	146	2,901	3,047	0	0
Natchitoches	520	233	1,329	1,379	2,427	2,309	304	180	4,580	4,101	108	108
New Iberia	1,229	1,135	2,068	2,011	2,808	3,186	232	229	6,337	6,561	344	264
N.O. 1st City Ct.	8,794	5,884	0	0	0	0	0	0	8,794	5,884	0	0
N.O. 2nd City Ct.	1,511	1,297	0	0	0	0	0	0	1,511	1,297	0	0
N.O. Municipal	0	0	33,117	29,546	0	0	0	0	33,117	29,546	0	0
N.O. Traffic	0	0	1,724	1,591	153,605	134,343	0	0	155,329	135,934	0	0
Oakdale	278	218	513	215	1,717	1,657	84	26	2,592	2,116	0	0
Opelousas	774	743	2,953	2,011	5,933	4,135	547	516	10,207	7,405	0	0
Pineville	877	1,247	4,220	3,225	4,337	3,829	0	0	9,434	8,301	0	0
Plaquemine	354	354	421	179	462	333	49	49	1,286	915	0	0
Port Allen	330	191	233	156	6,537	6,932	30	13	7,130	7,292	0	0
Rayne	575	530	518	560	3,037	2,906	123	84	4,253	4,080	0	0
Ruston	1,464	916	1,243	908	3,349	3,032	0	0	6,056	4,856	746	769
Shreveport	9,764	8,458	12,101	12,999	51,840	52,889	0	0	73,705	74,346	31,022	0
Slidell	1,829	1,531	1,787	1,746	5,088	5,045	456	342	9,160	8,664	717	717
Springhill	393	339	1,282	924	1,471	1,471	232	174	3,378	2,908	124	59
Sulphur	792	634	2,693	3,337	6,548	7,778	127	123	10,160	11,872	265	231
Thibodaux	719	339	2,728	2,592	3,623	3,524	305	204	7,375	6,659	0	0
Vidalia	21	8	108	61	826	505	37	14	992	588	0	0
Ville Platte	543	390	1,745	1,859	855	758	165	165	3,308	3,172	0	0
West Monroe	1,747	1,687	2,619	2,298	3,510	3,451	110	88	7,986	7,524	327	327
Winnfield	112	81	482	347	589	387	0	0	1,183	815	0	0
Winnsboro	869	31	544	459	427	414	46	44	1,886	948	0	0
Zachary	494	329	883	466	2,797	1,705	0	0	4,174	2,500	0	0
STATE TOTALS:	83,998	71,480	166,662	168,642	639,264	686,367	10,016	8,625	899,940	935,114	85,345	66,576

* DWI is included in the Criminal Column

** Other proceedings include actions not considered cases, such as post-conviction remedy, preliminary hearings, sentence review and extraordinary writs.



Number of Justices and Judges:	7	Supreme Court
	53	Courts of Appeal
	247	District, Family and Juvenile (includes 11 Commissioners)
	73	City and Parish Courts
	380	Total

Judicial Administrator's Office
The Supreme Court of Louisiana

400 Royal Street, Suite 1190

New Orleans, Louisiana 70130

(504) 310-2550 · www.lasc.org



Annual Report 2012 of the Judicial Council
of the Supreme Court of Louisiana

Judicial Administrator: Timothy F. Averill, JD, MPA

Editor: Valerie S. Willard, JD
Layout: Robert Gunn

Statistical Section compiled by: Court Management Information System
(CMIS) Staff; Court of Appeal Reporting System (CARS) Staff; Randy A.
Duke, CPA, CIA, CISA

This public document was published at a total cost of \$4,412.58. 1,250 copies of this public document were published in this first printing at a cost of \$3.53 per copy. This document was published by the Judicial Administrator's Office, 400 Royal St., Suite 1190, New Orleans, LA, 70130 as the annual report of the Judicial Council under the authority of the Judicial Budgetary Control Board and Supreme Court Rule XXII.