

Louisiana
Supreme Court

Induction of
Chief Justice Kimball
January 2009

SUPREME COURT
OF LOUISIANA

ANNUAL REPORT 2008

of the Judicial Council of the Supreme Court



THE SUPREME COURT OF LOUISIANA

From left, Justice John L. Weimer, Justice Chet D. Traylor, Justice Bernette J. Johnson, Chief Justice Catherine D. Kimball, Justice Jeffrey P. Victory, Justice Jeannette Theriot Knoll, Justice Greg G. Guidry

CHIEF JUSTICE CATHERINE D. KIMBALL

Fifth Supreme Court District
Ascension, East Baton Rouge, East Feliciana, Iberville, Livingston, Pointe Coupee, West Baton Rouge, and West Feliciana Parishes.*

JUSTICE GREG G. GUIDRY

First Supreme Court District
Jefferson, Orleans, St. Helena, St. Tammany, Tangipahoa, and Washington Parishes.*

JUSTICE JEFFREY P. VICTORY

Second Supreme Court District
Allen, Beauregard, Bossier, Caddo, DeSoto, Evangeline, Natchitoches, Red River, Sabine, Vernon, and Webster Parishes.*

JUSTICE JEANNETTE THERIOT KNOLL

Third Supreme Court District
Acadia, Avoyelles, Calcasieu, Cameron, Jefferson Davis, Lafayette, St. Landry, and Vermilion.*

JUSTICE CHET D. TRAYLOR

Fourth Supreme Court District
Bienville, Caldwell, Catahoula, Claiborne, Concordia, East Carroll, Franklin, Grant, Jackson, LaSalle, Lincoln, Madison, Morehouse, Ouachita, Rapides, Richland, Tensas, Union, West Carroll, and Winn Parishes.*

JUSTICE JOHN L. WEIMER

Sixth Supreme Court District
Assumption, Iberia, Jefferson, Lafourche, Plaquemines, St. Bernard, St. Charles, St. James, St. John the Baptist, St. Martin, St. Mary, and Terrebonne Parishes.*

JUSTICE BERNETTE J. JOHNSON

Seventh Supreme Court District
Jefferson and Orleans Parishes.*



Chief Justice Pascal F. Calogero, Jr., First Supreme Court District, retired on December 31, 2008.

ABOUT THIS REPORT

The *Supreme Court Annual Report* is a useful guide to judicial personnel and contacts throughout the state, as well as an overview of the Court's progress in 2008, and includes maps of electoral districts for the Supreme Court, the Courts of Appeal, and District Courts.

The **STATISTICAL DATA** section summarizes two-year activity trends in juvenile, civil, criminal and traffic categories for courts at all levels in the state.

RESOURCES ON THE WEB AT WWW.LASC.ORG

The **2008 LOUISIANA SUPREME COURT ANNUAL REPORT** and the **GUIDE TO LOUISIANA COURTS** featuring a list of judges, clerks and administrators (complete with contact phone numbers) for the Courts of Appeal, District Courts, and City and Parish Courts statewide are now available on the Louisiana Supreme Court web site at www.lasc.org/press_room/publications.asp.

ON THE COVER

Induction Ceremony of Chief Justice Catherine D. Kimball, the state's first female chief justice, on January 12, 2009.

* See Court District Maps on pages 6-7.

A YEAR OF TRANSITION

The year 2008 might best be described as a year of transition here at the Louisiana Supreme Court. Chief Justice Pascal F. Calogero, Jr. retired after serving almost two decades as Chief Justice, and I became Chief Justice on January 1, 2009. I am honored and excited to have achieved the position of Chief Justice after serving in the Louisiana state judiciary for over 26 years, the last 16 as a Justice on this Court. Several long-time staffers retired this past year, and a new Justice, the Honorable Greg Guidry, joined the Court, being elected from the First Louisiana Supreme Court District. We were also saddened by the death of retired Justice Revius O. Ortique, Jr. from New Orleans, with whom I had the pleasure to serve.

At the outset of my term as Chief Justice, the Justices met to set a direction for this year and beyond. We adopted a vision statement for our court. Though not profound, this simple statement is the standard by which we intend to measure our judicial system and the standard by which we intend to effectuate the change necessary to bring this vision to reality. Simply put, we envision hard working judges, who treat all within their purview with kindness, fairness and respect, and who require that same treatment by his or her employees and the attorneys who appear before the court; and a judiciary that is recognized by our state and nation as having those qualities. We envision a judiciary that handles its work efficiently and appropriately and cares as deeply about the disposition of a child abuse, a juvenile, or a custody case as it does about a high profile civil lawsuit.

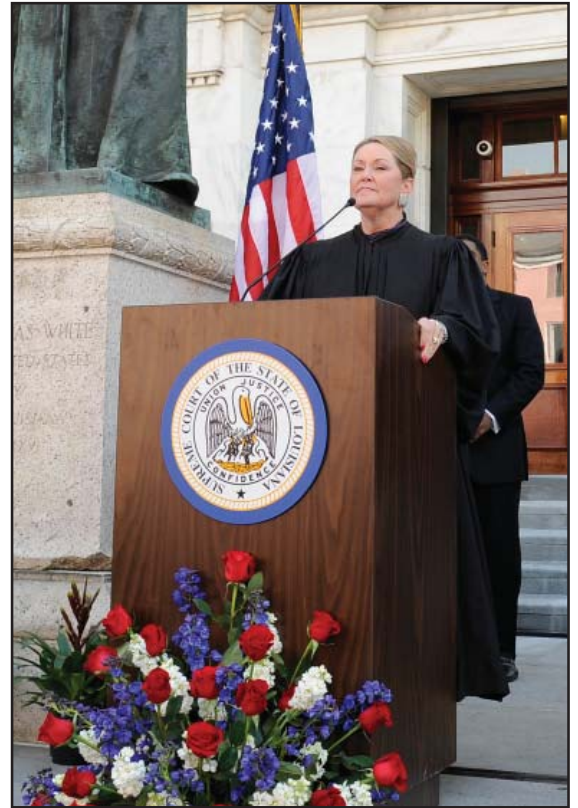
I commented on this vision at my Induction Ceremony, saying:

“This may not be a lofty vision, and may seem rather simplistic.

However, it is vast in its scope. During the years I have spent as a Justice on this Court, I have encountered many members of our state judiciary who share this vision, and who toil daily to make our justice system work for each of our citizens.

“We have some tremendous talent in the ranks of our state judges, and I am proud to serve them, and you, as Chief Justice. I realize that as Chief Justice, I have undertaken an awesome responsibility, and let me assure you that I do not do it lightly. As Chief Justice, I serve as Chief Administrative Officer of the Louisiana court system, and it is my responsibility, with the help of the state Supreme Court, to lead our judiciary towards making the vision I have shared with you a reality. While we have taken some steps toward this end, the journey is far from over. And it is not a journey we can take alone. We need your help.

“You will begin to see us look at our system in a new way,



ask some hard questions and perhaps even ruffle some feathers as we institute greater reforms of this judicial system in the next few years. We will not shy away from asking the hard questions, like why do we add more judgeships because population shifts and other factors around this state cause some districts to be overworked, but never reduce or eliminate judgeships or combine districts when those same population shifts leave some with not enough work. Why can one judge handle his or her docket consistently in a 6-9 month time frame when another judge's docket with a similar caseload takes 1-2 years? Why do some courts go to great extremes to let jurors know about trial cancellations so as not to interrupt their lives while other courts leave citizens languishing in hallways with little or no information about the progress of their day? Why do we not have consistent and

MESSAGE FROM THE CHIEF JUSTICE

easy to understand jury instructions? Why does it take so long for a matter to come to trial? These and others are legitimate inquiries and they will be made. They are also complicated situations to remedy sometimes.

“We all know change does not come easily here or anywhere. One of the things praised about our Louisiana Constitution when it was adopted was its local autonomy, and the power vested in the people at the local level. We have very strong local governments in this state, and it has been our strength in many instances. However, sometimes great strengths can also be great weaknesses. Changing the usual way of doing things will require cooperation from elected judges, elected clerks of courts, elected sheriffs and police chiefs and elected governing bodies. We are seeing these collaborations occur right now in improving our juvenile justice system throughout this state. They can be powerful but can also make change a slow process. For real reform to be workable, in my opinion, whether it be in the judicial system or elsewhere, you - those of you who work within the system - must care, and must act accordingly. You must be willing to voice your desire for reform. Your interest and your caring are what cause change to happen. You should be concerned when a child, the most innocent of victims, has been abused, but yet gets lost in our judicial system. You should be concerned when a judge does not handle his or her docket in an appropriate amount of time, because it is in fact true that justice delayed is justice denied. And you should be concerned when jurors, witnesses, or litigants are treated rudely by personnel in a courthouse.

“These are not the norm in our judicial system by any means, but they are the events that cause the good hardworking members of our judicial system to be cast into

disrespect by the public, the media and the users of the system, along with the few who operate in this fashion.

“I know that the vast majority of judges and lawyers in Louisiana want a system where they work hard and their hard work is valued. I as Chief Justice, and the Justices on this Court, are committed to leading the effort to improve the operations of our judicial system and simply to make it operate as well as it can - timely, efficiently, and fairly.

“As Chief Justice, my first commitment to the citizens of Louisiana and to you who work in the judicial system, is to do my best to make the vision of a competent caring state judiciary a reality. And I believe that working together we can accomplish this goal.”

Several weeks have passed since I first made the above remarks. And because we realize that it is our responsibility to lead, the Louisiana Supreme Court has already begun taking some steps to accomplish the goal of a competent caring judiciary. The Justices have expressed to me their commitment and agreement to have our own internal operating systems reviewed and revised with the goal of operating more timely, efficiently and fairly. In fact, we are in the process of retaining some outside consultants to come in and look at how we operate internally to see if we can improve the way we currently handle writ applications to see if we can perhaps speed up the process.

I also recently asked our court employees to give me their suggestions or recommendations on how we could help them do their jobs better, and I was so impressed with the results. The suggestions offered by our employees showed that they had really put some thought into their comments. We have already started to implement some of their recommendations, like making sure our employees receive copies of the press releases issued by our Community

Relations Department so that the employees know what’s going on in the state judiciary. I have also begun to hold regular staff meetings with department heads and have encouraged them to meet with their departments as well to share information about office activities. I have also conducted several “walk throughs” of the Courthouse so that I could personally see where our employees work, and have the chance to greet each employee individually. In addition, we are instituting management training for the managers as well as for me. We are continuing to evaluate the suggestions, but already I have received much positive feedback on what we have done so far.

As Chief Justice, I am totally open to suggestions and recommendations from anyone who is interested enough to offer them, so please feel free to write me with any ideas you may have.

I have the distinct pleasure of submitting to the Supreme Court of Louisiana, to the Board of Governors of the Louisiana State Bar Association, to the citizens of Louisiana, and to other interested parties the Annual Report of the Supreme Court of Louisiana for 2008, including the reports of the Judicial Council, the Judicial Administrator’s Office, the Clerk of Court, the Law Library of Louisiana, the Louisiana Judicial College, and the Judiciary Commission of Louisiana, as well as statistical information on the State judiciary reflecting the work of the past year. The report also includes information from the Committee on Bar Admissions and the Louisiana Attorney Disciplinary Board, entities that operate under the auspices of the Supreme Court. I congratulate and thank all who were involved in our continuing efforts throughout 2008 to improve judicial administration.



Catherine D. Kimball
Chief Justice
Louisiana Supreme Court

2008: A YEAR IN REVIEW

This section highlights initiatives of the Judicial Administrator's Office, the managerial arm of the Louisiana Supreme Court which serves as staffing and fiscal agent for the Judicial Council and court-appointed task forces and committees. The section also includes information about the Law Library, Judicial College, Bar Admissions, Clerk of Court's Office, Attorney Disciplinary Board, and the Judiciary Commission.



CHILDREN AND FAMILIES

By administering statewide programs, the Court enhances judicial services to children and families.

- The Families in Need of Services (FINS) Assistance Program continued to serve FINS offices statewide while working with the MacArthur Foundation Models for Change program to assess FINS implementation, analyze statutes and policies, review its database, and identify areas for improvement.
- The Court Improvement Program focus included permanency outcomes for older youth in foster care, disproportionate representation of minorities in the child welfare system, the children's law website (www.clarola.org), better representation systems for parents and children, and the rollout of a case management and data system to local courts.
- The CASA Assistance Program provided fiscal and programmatic oversight to Court Appointed Special Advocates, including a statewide community awareness campaign.

DRUG COURTS

Through intensive treatment, random and frequent drug testing, case management, close judicial monitoring and the use of sanctions and incentives, drug courts inhibit drug use and reduce the criminality of drug-using non-violent offenders. The Supreme Court, through the Supreme Court Drug Court Office (SCDCO), is the fiscal agent for funds allocated to local drug court programs.

- In 2008, Louisiana's 47 adult and juvenile drug courts spent nearly \$13.8 million in state and federal funds for drug testing, treatment and supervision of about 3,100 clients a month.
- Training for drug court teams kept judges, lawyers, treatment professionals and others involved abreast of the latest developments.
- The SCDCO partnered with representatives from three local jurisdictions to assist in planning new drug court programs.

COURT MANAGEMENT INFORMATION SYSTEMS & LOUISIANA PROTECTIVE ORDER REGISTRY

CMIS houses some 3,135,615 criminal disposition records. The Criminal Records Project sends final dispositions to the Department of Public Safety for inclusion in a computerized criminal history database; 35,948 were posted by the end of 2008.

- CMIS disbursed over \$200,000 from federal grants to district clerks of court to upgrade case management systems and support accurate criminal disposition data.
- District courts electronically report, track and analyze caseload filing statistics through a new Web site released by CMIS. The Louisiana Court Connection, a Web-based case management system developed for city courts, will be tested in Baton Rouge, Lafayette, and Lake Charles in the spring.
- In 2008, the Louisiana Protective Order Registry received 20,983 court orders prohibiting domestic abuse and dating violence, bringing the

total for the 10 years of LPOR's existence to 189,983.

- Registry staff answered 241 order verification requests from the FBI's National Instant Background Check System, to prevent the sale of firearms and ammunition to prohibited individuals, and 256 requests from state and local law enforcement officers. Both numbers increased significantly over 2007.
- LPOR educational programs reached about 450 judicial officials.

COMMUNITY RELATIONS

The outreach division of the Court oversees communications, events, courthouse tours and other public involvement, including the web site (www.lasc.org) as well as media relations and publications. Among significant 2008 accomplishments:

- Work with the Louisiana District Judges Association to develop a "Best Practices" tool for trial courts to enhance the efficiency of judges on the bench.
- An essential role in organizing the celebrations and media coverage surrounding the retirement of Chief Justice Calogero.
- Coordination of numerous events, including Law Day activities, the Project LEAD mock trials, the hosting of the State Justice Institute Board of Directors meeting and Katrina tour, and the Louisiana Law and Civic Education Teachers' Summer School.
- Publications including the *Annual Report*, *Justice at Work* and *Court Column*.

NEW JUDGESHIPS

In 2008, the 11th, 14th, 15th, and 31st Judicial Districts each requested one new judgeship but withdrew their requests; the 26th Judicial District requested two new judgeships, which were not recommended by the Judicial Council.

LAW LIBRARY

The Law Library reaches out to patrons in many ways, from providing information about its services at the Bar Association's Solo and Small Firm Conference and the Fall Judges Conference to co-sponsoring a continuing legal education program celebrating the bicentennial of the *Digest of the Civil Laws Now in Force in the Territory of Orleans (1808)*.

Among other 2008 milestones:

- Reference staff fielded 9,710 questions, almost half of which required in-depth research. Over 40% of the questions were asked in person, with 36% by phone and 22% by e-mail; 84% came from patrons outside the Court.
- Some 680 titles were added to the library's collection and a total of 2,697 volumes to its shelves.
- Technical procedures were updated, as migration to a new live database continues.

JUDICIAL COLLEGE

Over 860 members of the judiciary took part in 2008 Judicial College sessions which featured some 75 speakers. The number of participants increased by about a third over the 2007 level.

- Among the topics: latest developments in juvenile law and juvenile justice reform, competency evaluations, changes in legislation affecting civil and criminal law and procedures; understanding psychiatric disorders and mental retardation; child custody issues; judicial ethics; and training for new judges and staffs.
- In 2008, the Judicial College also co-sponsored three special programs on capital litigation with the National Judicial College.

BAR ADMISSIONS

In 2008, the Committee administered exams in February, for a 55%

pass rate, and in July, with a 64% pass rate. A total of 599 new attorneys were admitted to the Louisiana Bar in April and October ceremonies.

- Court revisions to bar admission include character and fitness investigations and a procedure allowing conditional admission.
- Technology advances allow applicants to submit registration forms, bar exam applications and character and fitness applications online, as well as increasing the efficiency and reliability of grading.

CLERK OF COURT

In 2008, 3,014 cases were filed, up from 2,497 cases in 2007 - the lowest number of filings in 20 years. The Court disposed of 2,834 cases in 2008, an increase of 189 over 2007. Due to the increased number of filings, however, the net clearance rate for the year was 94%.

- The court received requests from 86 out-of-state attorneys in 2008 to be admitted under its Emergency Civil Pro Bono Rule, bringing the total to 198 since adoption of the rule in 2006. It allows attorneys to donate time to assist hurricane victims in civil matters throughout the affected region.
- As post-hurricane recovery continues and fewer Louisiana attorneys practice in other states, issuance of Certificates of Good Standing dropped to 4,909 in 2008 from 5,920 in 2007.
- A consolidated case management system and virtual court have been implemented for the Administrative Counsel's Office, News Release and Docket generation and Bar Rolls updating; integration of document scanning and indexing with data entry and display will be added in 2009.
- The Court's internet presence continues to grow, providing readily available data to attorneys and the public.

For A Guide to Louisiana Courts, a directory of judges, clerks of court and court administrators, please see our electronic annual report at www.lasc.org/press_room/annual_reports/default.asp.

An audio/video web streaming camera upgrade offers greater resolution and increased bandwidth. A video presentation system installed in 2008 includes a large-screen TV which rises behind the bench to allow the public to see counsel arguments. The signal also goes to the Justices' tablet PCs and is streamed by the IT department to the Internet.

- In 2008, the Court hosted at least 272 events – Court conferences, Oral Argument days and other meetings.

ATTORNEY DISCIPLINARY BOARD

In 2008, the number of complaints against lawyers fell significantly for the first time in nearly two decades. The 2,542 complaints received by the Office of Disciplinary Counsel were almost 450 lower than annual norm of more than 3,000. The decline may be attributable to attorney awareness of an aggressive approach to investigating allegations of lawyer misconduct.

- The Louisiana Attorney Disciplinary Board, in partnership with the Louisiana State Bar Association, sponsored free, statewide CLE seminars on ethics and professionalism.
- The Louisiana Supreme Court addressed public concern over improper lawyer advertising by amending the Rules of Professional Conduct. Anticipating increased investigation and prosecution, staff in the Office of Disciplinary Counsel will be trained in the new regulations.
- In 2008, 119 orders of discipline were imposed. Of those, 57 were disbarments (or permanent resignations in lieu of discipline) and suspensions from the practice of law.

JUDICIARY COMMISSION

The Judiciary Commission of Louisiana received and docketed 609 complaints lodged against judges and justices of the peace in 2008. In addition, 209 complaints filed prior to 2007 were pending January 1, 2008.

- Of the 609 complaints filed and docketed in 2008, 354 were screened out as not within the jurisdiction of the Commission, or without merit or sufficient corroborating evidence. The remaining 255 cases were reviewed to consider the need for investigation. During 2008, 92 cases required in-depth investigation.
- In 2008, the Commission filed eight formal charges against eight judges or justices of the peace, and submitted to the Supreme Court two cases recommending discipline
- The Supreme Court removed one judge from office and suspended two justices of the peace without pay. The Court revoked the probation of a judge and made executory his suspension without pay until the end of his term. Thereafter the judge resigned from his judicial office. The Court

disqualified two judges from exercising judicial functions after federal indictments; upon their convictions, they tendered their respective resignations from the bench.

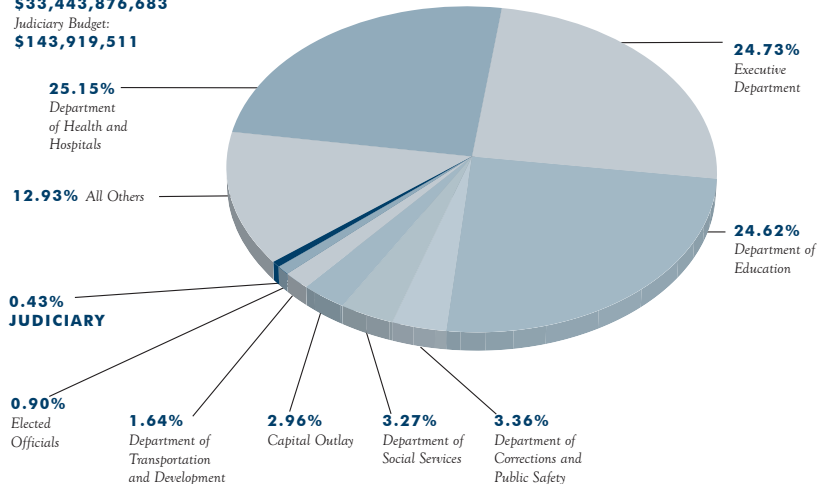
- The Commission had 255 cases pending as of December 31, 2008, having disposed of 563 cases during the year. There was one case pending before the Court.

JUDICIAL BUDGET

Louisiana does not have a unified state court funding system. Operations of district, parish and city courts are primarily funded by local governments. An annual legislative appropriation funds the operations of the Louisiana Supreme Court, the five circuit courts of appeal, and salaries of Supreme Court justices, Courts of Appeal judges, and district court judges, including family and juvenile courts. The state also funds a portion of the salaries of parish and city court judges, and the compensation of retired and *ad hoc* judges. In 2008, 0.43% of the state's general fund was appropriated to the budget of the state judiciary.

LOUISIANA STATE BUDGET 2008-2009

Total State Budget: **\$33,443,876,683**
 Judiciary Budget: **\$143,919,511**

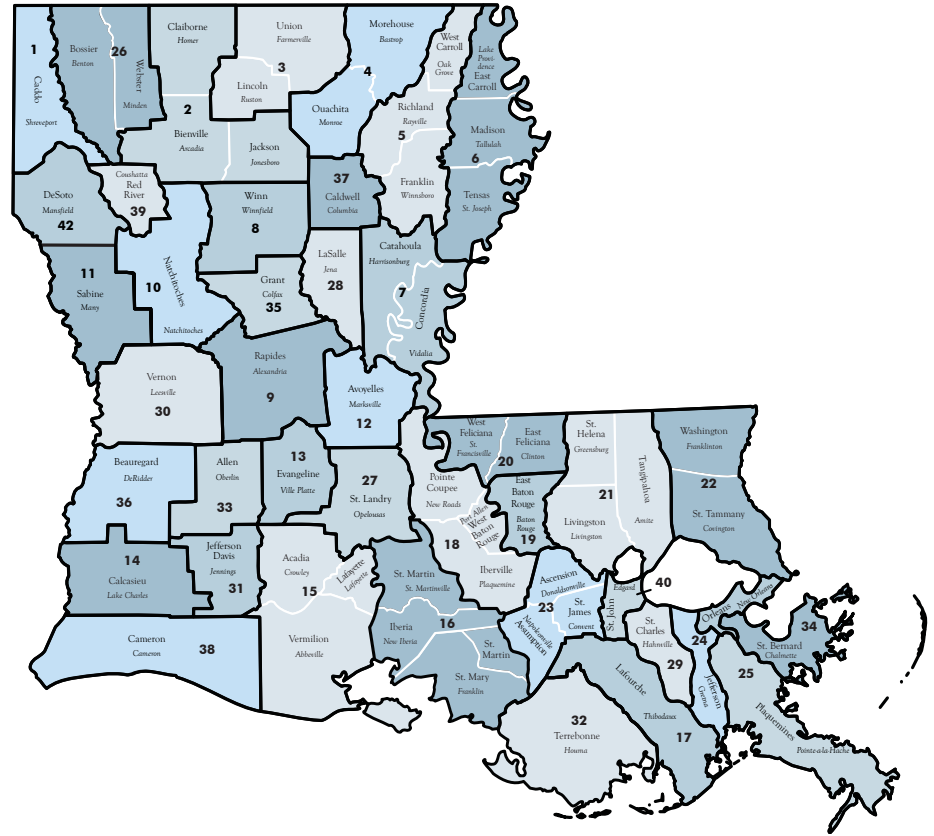


MAPS OF JUDICIAL DISTRICTS

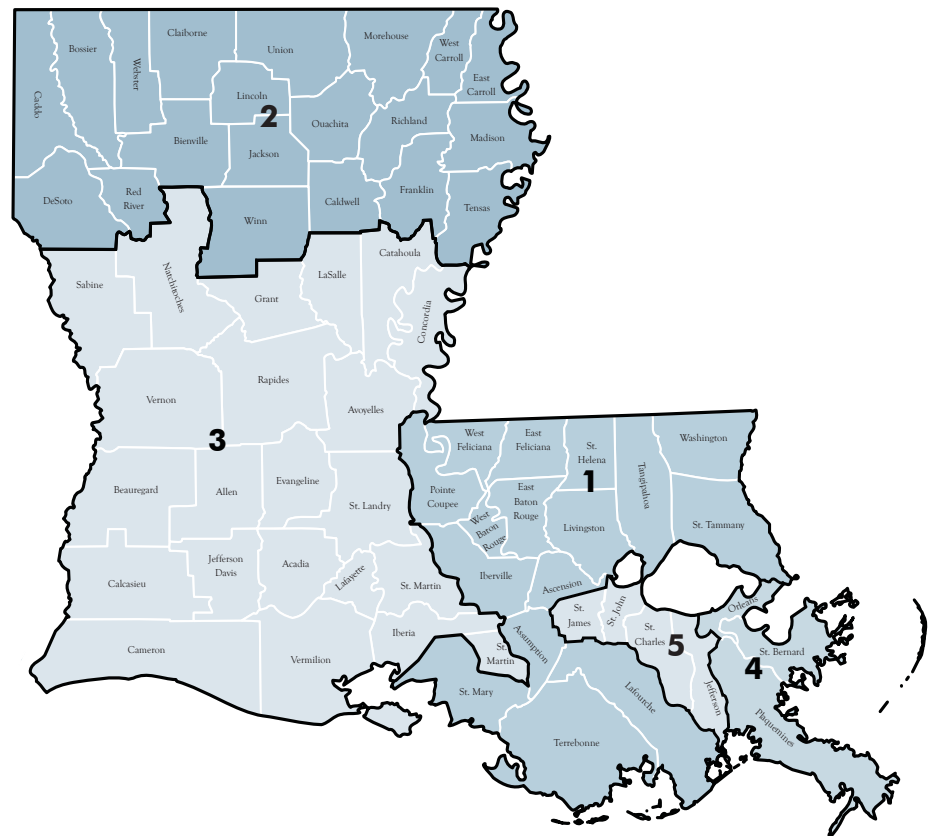
LOUISIANA DISTRICT COURTS
JUDICIAL DISTRICTS

* ACT 621 of 2006 Regular Legislative Session reorganizes and consolidates the Orleans Parish civil and criminal courts to 41st Judicial District Court by January 1, 2010; consolidates civil and criminal sheriffs by January 1, 2010; consolidates Orleans Parish civil, criminal, juvenile, 1st City and 2nd City Courts judicial expense funds by January 1, 2009; abolishes the recorder of mortgages, register of conveyances and notarial archives by January 1, 2009, and merges those offices with the Clerk of Civil District Court until the Clerk of the 41st Judicial District Court is created January 1, 2010; consolidates Orleans Parish Juvenile Court with the 41st Judicial District Court effective January 1, 2015. ACT 873 of the 2007 Regular Legislative Session amends ACT 621 to change the effective date of January 1, 2010 to be December 31, 2014.

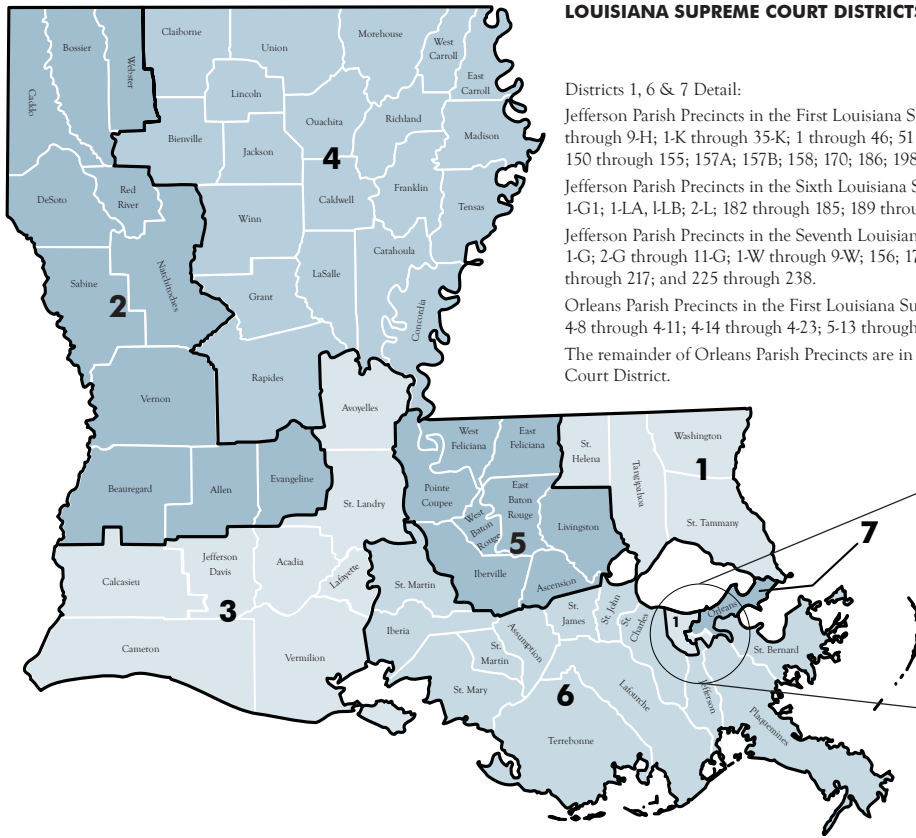
** ACT 416 of 2007 Regular Legislative Session splits the 11th Judicial District Court to create a new judicial district comprised of DeSoto Parish as the 42nd Judicial District.



LOUISIANA COURTS
OF APPEAL CIRCUITS



LOUISIANA SUPREME COURT DISTRICTS Effective January 1, 1999



Districts 1, 6 & 7 Detail:

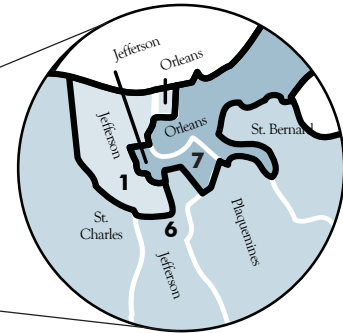
Jefferson Parish Precincts in the First Louisiana Supreme Court District are 1-H through 9-H; 1-K through 35-K; 1 through 46; 51 through 108; 115 through 138; 150 through 155; 157A; 157B; 158; 170; 186; 198 and 199.

Jefferson Parish Precincts in the Sixth Louisiana Supreme Court District are 1-G1; 1-LA, 1-LB; 2-L; 182 through 185; 189 through 197; and 246A through 250.

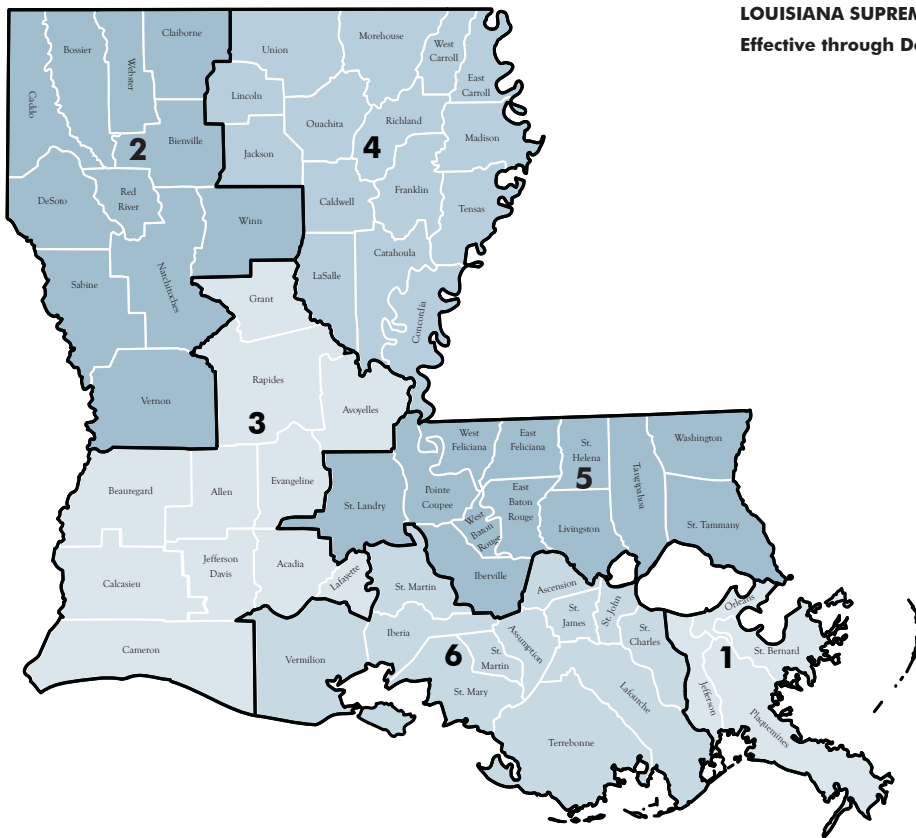
Jefferson Parish Precincts in the Seventh Louisiana Supreme Court District are 1-G; 2-G through 11-G; 1-W through 9-W; 156; 171 through 181; 187; 188; 210 through 217; and 225 through 238.

Orleans Parish Precincts in the First Louisiana Supreme Court District are 3-20; 4-8 through 4-11; 4-14 through 4-23; 5-13 through 5-18; and 17-17 through 17-21.

The remainder of Orleans Parish Precincts are in the Seventh Louisiana Supreme Court District.



LOUISIANA SUPREME COURT DISTRICTS Effective through December 31, 1998



BEHIND THE COURTS' SUCCESS

Dozens of people, working together, have made the accomplishments of 2008 possible. Some of them are Court staff, some are members of councils and commissions. Their efforts have enabled the progress of the Louisiana court system and of justice in the State.

MEMBERSHIP OF THE JUDICIAL COUNCIL

Hon. Pascal F. Calogero, Jr., Chair
Chief Justice, Supreme Court of Louisiana
 Hon. Catherine D. Kimball
Justice, Supreme Court of Louisiana
 Honorable Henry N. Brown, Jr.
representing Conference of Court of Appeal Judges
 Honorable Billy Ezell
representing Conference of Court of Appeal Judges
 Honorable Mary Hotard Becnel
representing Louisiana District Judges Association
 Honorable Robert Murphy
representing Louisiana District Judges Association
 Honorable Paul Bonin
representing Louisiana City Judges Association
 Honorable Lilynn Cutrer
representing Louisiana Council of Juvenile and Family Court Judges
 Larry Feldman, Jr., Esq.
representing Louisiana State Bar Association
 Jonathan Ryan Katz, Esq.
representing Young Lawyers Section of the LSBA
 J. David Garrett, Esq.
representing Louisiana State Law Institute
 Honorable Julie Quinn
State Senator
 Honorable Cedric Richmond
State Representative
 Honorable Robert W. Levy
representing Louisiana District Attorneys Association
 Audrey A. McCain, Esq.
representing the Louisiana State Bar Association appointed by the Louisiana Supreme Court
 Honorable Charles J. Jagneaux
representing Louisiana Clerks of Court Association
 Mr. Fred Skelton
Citizen Representative

EX-OFFICIO MEMBERS OF JUDICIAL COUNCIL

Justice Bernette Joshua Johnson
 Justice Jeffrey P. Victory
 Justice Chet D. Traylor
 Justice Jeannette Theriot Knoll
 Justice John L. Weimer

STAFF OF JUDICIAL COUNCIL

Hugh M. Collins, Ph.D.
Judicial Administrator
Supreme Court of Louisiana
 Anthony J. Gagliano
Deputy Judicial Administrator
Supreme Court of Louisiana

STATISTICAL OVERVIEW

The statistical information in this section was compiled from data submitted to the Judicial Administrator's Office by the various courts of Louisiana during the calendar year 2008.

SUPREME COURT

In 2008, 3,014 cases were filed, up from 2,497 cases in 2007 - the lowest number of filings in 20 years. The Court disposed of 2,834 cases in 2008, an increase of 189 over 2007. Due to the increased number of filings, however, the net clearance rate for the year was 94%.

COURTS OF APPEAL

In 2008, there were 8,193 filings in the Louisiana courts of appeal. The 2008 filings were 1.92% higher than those in 2007. In total, 2,314 opinions were rendered during 2008, a decrease of 3.98% compared to 2007. The number of opinions rendered per judge totaled 56 in the First Circuit, 43 in the Second Circuit, 45 in the Third Circuit, 35 in the Fourth Circuit, and 36 in the Fifth Circuit.

DISTRICT COURTS

During 2008, there were 772,632 filings in the district courts, an increase of 32,817 filings compared with 2007 (a 4.4% rise). Juvenile filings increased by 1.97% over 2007 to 29,436. 2008 criminal filings were down by 8.09% (a decrease of 14,132); civil filings dropped by 6.11% (9,761 less); and traffic filings were up by 14.61% (a rise of 55,167).

CITY AND PARISH COURTS

Filings in Louisiana city and parish courts decreased by 6.38%, from 1,088,411 filings in 2007 to 1,018,965 filings in 2008.

STAFF OF THE JUDICIAL ADMINISTRATOR'S OFFICE



Hugh M. Collins, Ph.D.
Judicial Administrator

Timothy J. Palmatier, JD, MBA, CPA
Chief Deputy Judicial Administrator
 Timothy F. Averill, JD, MPA
General Counsel

DEPUTY JUDICIAL ADMINISTRATORS

Chris Andrieu
 John S. "Chip" Coulter, JD
 Rose Marie DiVincenti, CCR, RPR
 Anthony J. Gagliano
 Scott Griffith, JD, MPA
 Kären Hallstrom, JD, MSW
 Anna Paxton, CCP
 Nancy E. Rix, JD
 Darryl M. Schultz
 Terence Sims, CPA, CFE
 Valerie Willard, JD

SUPREME COURT OF LOUISIANA *Two Year Trend in Activity*

	2007 Total	2008 Total	2008 Civil	2008 Criminal
APPEALS				
Filed	16	15	9	6
Dismissed	1	3	1	2
Opinions Rendered				
With written opinions	10	16	8	8
Per curiams	8	8	4	4
WRITS				
Applications Filed (Except Prisoner Pro Se)	1,441	1,535	1,106	429
Prisoner Pro Se Writs	879	1,308	48	1,260
Granted	193	516	107	409
To be argued	54	67	55	12
With orders & transferred	139	449	52	397
Dismissed	31	43	29	14
Not Considered	57	73	67	6
Denied	2,183	2,030	945	1,085
Opinions Rendered	48	45	39	6
REHEARINGS				
Applied for	48	111	39	72
Granted	2	6	5	1
Denied/Dismissed	43	56	37	19
Opinions Rendered	0	2	2	0
ORIGINAL JURISDICTION				
Petitions Filed	159	156	156	0
Opinions Rendered	5	3	3	0
Other Actions	135	145	145	0
OTHER MATTERS				
Filed	2	0	0	0
Opinions Rendered	0	0	0	0
Other Actions	24	26	10	16
OTHER PER CURIAM OPINIONS RENDERED				
	180	178	136	42
TOTAL FILINGS				
	2,497	3,014	1,319	1,695
Per Justice	357	431	188	242
TOTAL OPINIONS RENDERED				
	63	67	53	14

THE LAW LIBRARY OF LOUISIANA STAFF

Georgia Chadwick, MLIS
Director, Law Library of Louisiana
 Marie Erickson, JD, MLS
Head of Public Services
 Miriam Childs, MLS
Head of Technical Services/Documents
 Katherine Nachod, MLS
Reference/Electronic Services Librarian
 Jennifer Creevy, MLS
Serials/Acquisitions Librarian
 Tara Lombardi, MLS
Reference/Collection Development Librarian
 Ruth Mahoney
Library Associate
 Jason Kruppa
Administrative Assistant
 Gregory Duhé
Library Associate

FRIENDS OF THE LAW LIBRARY BOARD

Judith Gainsburgh, *Chair*
 David Dalia
 Anthony J. Gagliano
 Cameron Gamble
 T. Jeffery Gregoire
 Rowena Jones
 Judge Rosemary Ledet
 A.J. Levy
 Judge Patricia R. Murray
 Margaret Woodward
 Valerie Willard

COMMITTEE ON BAR ADMISSIONS

Scott T. Whittaker
Chairman
 Richard A. Goins
Secretary/Director of Character & Fitness
 Robert J. David, Jr.
Director of Accommodations
 S. Maurice Hicks
Director of Testing
 Daniel A. Webb
Testing Committee
 J. Patrick Beauchamp
Examiner—Civil Code I
 Judith R. Atkinson
Examiner—Civil Code II
 Leland David Cromwell
Examiner—Civil Code III
 Robert E. Landry
Examiner—Louisiana Code of Civil Procedure
 Lawrence J. Centola, Jr.
Examiner—Torts
 Ronald J. White
Examiner—Business Entities & Negotiable Instruments
 Kelly M. Legier
Examiner—Constitutional Law
 Brian A. Jackson
Examiner—Criminal Law, Procedure & Evidence
 S. Christopher Slatten
Examiner—Federal Jurisdiction & Procedure
 Denise S. Leeper
Bar Admissions Administrator
 Rhonda Lorig
Bar Admissions Assistant

The Supreme Court has exclusive original jurisdiction in cases involving disciplinary actions against lawyers and judges, appellate jurisdiction in capital cases where the death penalty has been imposed and in cases in which a law or ordinance has been declared unconstitutional, as well as supervisory jurisdiction over all courts.

LOUISIANA COURTS OF APPEAL *Two Year Trend in Activity***OFFICE OF THE CLERK**

John Tarlton Olivier, JD
Clerk of Court
 Jeffrey Charles Collins, JD
Chief Deputy Clerk of Court
 Katherine Fontana
2nd Deputy Clerk of Court
 Rai Daigle
Deputy Clerk—Front Office
 Carmen B. Young
Deputy Clerk—Opinions & Filings
 Eddie Gonzales
Deputy Clerk—Records Manager & Property Manager
 Peter Haas
Director of Information Systems
 John White, CPA
Business Services Manager
 Tommy M. Anderson
Director of Security

2008 JUDICIARY COMMISSION

Ron S. Macaluso, Esq., *Chair*
 Mrs. Len G. Ciaravella, *Vice Chair*
 Mark A. Delphin, Esq.
 Judge Bonnie F. Jackson
 Judge Edwin Lombard
 Judge Robert H. Morrison, III
 Mr. Duplain W. Rhodes III
 Dr. Clinton Young
 Sharonda R. Williams, Esq.

STAFF OF THE JUDICIARY COMMISSION

Hugh M. Collins, Ph.D.
Chief Executive Officer
 Timothy J. Palmatier, JD, MBA, CPA
Deputy Chief Executive Officer
 Nancy E. Rix, JD
Commission Legal Counsel

STAFF OF THE OFFICE OF SPECIAL COUNSEL

Byron C. Williams, JD, *Special Counsel*

**THE JUDICIARY COMMISSION OF
 LOUISIANA, CREATED IN 1968 BY AN
 AMENDMENT TO ARTICLE IX, CONSTI-
 TUTION OF 1921, IS CONTINUED IN
 EXISTENCE BY ARTICLE V, SECTION 25,
 CONSTITUTION OF 1974.**

LOUISIANA ATTORNEY DISCIPLINARY BOARD

Billy R. Pesnell, *Chair*
 Joseph R. Ward Jr., *Vice-Chair*
 William D. Aaron Jr.
 Glenn B. Adams (LSBA Member)
 Charles C. Beard Jr.
 Martin L. Chehotsky
 James R. Dagate
 Lev M. Dawson
 Dow M. Edwards
 Richard E. Gerard Jr.
 Dennis W. Hennen
 Christopher H. Riviere
 Linda P. Spain
 Michael S. Walsh

	2007 Total	2008 Total	2008 Civil	2008 Criminal
FIRST CIRCUIT				
Appeals Filed	823	861	662	199
Motions Filed	58	50	30	20
Writs Filed (except Pro Se)	648	666	469	197
Writs Refused*	517	509	336	173
Writs Granted	126	117	92	25
Pro Se Writs Filed	1,121	1,073	252	821
Pro Se Writs Refused*	955	990	236	754
Pro Se Writs Granted	88	81	6	75
Appeals Dismissed/Transferred	150	152	125	27
Consolidated Opinions	43	50	50	0
Opinions Rendered **	787	676	492	184
Rehearings Acted Upon***	168	186	133	53
Appeals Pending	472	471	384	87
Argued But Not Decided	72	50	43	7
To Be Argued	400	421	341	80
Opinions Rendered Per Judge by Circuit	66	56	41	15
SECOND CIRCUIT				
Appeals Filed	471	432	256	176
Motions Filed	14	12	8	4
Writs Filed (except Pro Se)	198	259	153	106
Writs Refused*	154	180	126	54
Writs Granted	62	48	26	22
Pro Se Writs Filed	404	363	9	354
Pro Se Writs Refused*	377	363	8	355
Pro Se Writs Granted	56	26	2	24
Appeals Dismissed/Transferred	47	31	25	6
Consolidated Opinions	31	34	17	17
Opinions Rendered **	412	385	225	160
Rehearings Acted Upon***	97	67	49	18
Appeals Pending	215	206	115	91
Argued But Not Decided	56	61	36	25
To Be Argued	159	145	79	66
Opinions Rendered Per Judge by Circuit	46	43	25	18
THIRD CIRCUIT				
Appeals Filed	613	602	409	193
Motions Filed	35	27	14	13
Writs Filed (except Pro Se)	429	412	310	102
Writs Refused*	329	317	252	65
Writs Granted	71	90	62	28
Pro Se Writs Filed	547	540	21	519
Pro Se Writs Refused*	454	470	16	454
Pro Se Writs Granted	86	79	7	72
Appeals Dismissed/Transferred	51	40	37	3
Consolidated Opinions	0	0	0	0
Opinions Rendered **	545	545	377	168
Rehearings Acted Upon***	118	79	51	28
Appeals Pending	267	300	197	103
Argued But Not Decided	11	32	22	10
To Be Argued	256	268	175	93
Opinions Rendered Per Judge by Circuit	45	45	31	14

LOUISIANA COURTS OF APPEAL Two Year Trend in Activity

	2007 Total	2008 Total	2008 Civil	2008 Criminal
FOURTH CIRCUIT				
Appeals Filed	556	453	321	132
Motions Filed	24	20	16	4
Writs Filed (except Pro Se)	595	650	422	228
Writs Refused*	384	461	323	138
Writs Granted	142	188	113	75
Pro Se Writs Filed	466	461	13	448
Pro Se Writs Refused*	358	379	8	371
Pro Se Writs Granted	115	90	6	84
Appeals Dismissed/Transferred	40	62	56	6
Consolidated Opinions	38	79	75	4
Opinions Rendered **	435	422	300	122
Rehearings Acted Upon***	72	91	80	11
Appeals Pending	366	276	206	70
Argued But Not Decided	90	88	82	6
To Be Argued	276	188	124	64
Opinions Rendered Per Judge by Circuit	36	35	25	10
FIFTH CIRCUIT				
Appeals Filed	325	323	196	127
Motions Filed	13	18	8	10
Writs Filed (except Pro Se)	304	281	176	105
Writs Refused*	216	183	120	63
Writs Granted	74	70	33	37
Pro Se Writs Filed	395	690	4	686
Pro Se Writs Refused*	267	241	3	238
Pro Se Writs Granted	83	97	3	94
Appeals Dismissed/Transferred	38	33	18	15
Consolidated Opinions	1	2	2	0
Opinions Rendered **	231	286	170	116
Rehearings Acted Upon***	16	55	39	16
Appeals Pending	159	168	107	61
Argued But Not Decided	31	64	40	24
To Be Argued	128	104	67	37
Opinions Rendered Per Judge by Circuit	29	36	21	15
TOTAL FOR ALL CIRCUITS				
Appeals Filed	2,788	2,671	1,844	827
Motions Filed	144	127	76	51
Writs Filed (except Pro Se)	2,174	2,268	1,530	738
Writs Refused*	1,600	1,650	1,157	493
Writs Granted	475	513	326	187
Pro Se Writs Filed	2,933	3,127	299	2,828
Pro Se Writs Refused*	2,411	2,443	271	2,172
Pro Se Writs Granted	428	373	24	349
Appeals Dismissed/Transferred	326	318	261	57
Consolidated Opinions	113	165	144	21
Opinions Rendered **	2,410	2,314	1,564	750
Rehearings Acted Upon***	471	478	352	126
Appeals Pending	1,479	1,421	1,009	412
Argued But Not Decided	260	295	223	72
To Be Argued	1,219	1,126	786	340
Opinions Rendered Per Judge	45	44	30	14

LOUISIANA JUDICIAL COLLEGE BOARD OF GOVERNORS

CHAIRMAN

Justice Jeffrey P. Victory
Supreme Court of Louisiana

MEMBERS

Judge Gene Thibodeaux
Court of Appeal, 3rd Circuit
Judge Fredericka Wicker
Court of Appeal, 5th Circuit
Judge Alvin Turner
23rd Judicial District Court
Judge John Michael Guidry
Court of Appeal, 1st Circuit
Judge Harry F. Randow
9th Judicial District Court
Judge Benedict J. Willard
Criminal District Court
Judge Alvin Batiste
18th Judicial District Court
Judge Kim Stansbury
City Court of Morgan City
Judge David Matlock
Caddo Parish Juvenile Court
Vacancy
(La. Representative)
Vacancy
(Senate Representative)

EX-OFFICIO

Hon. Jimmy R. Faircloth, Jr.
Executive Counsel to the Governor
Elizabeth Foote
President, Louisiana State Bar Association
Judge Jimmie Peters
Conference of Court of Appeal Judges
Judge John Conery
Louisiana District Judges Association
Judge Paul Sens
Louisiana City Judges Association
Judge Lilynn Cutrer
Louisiana Juvenile Judges Association

EXECUTIVE DIRECTOR

Cheney C. Joseph, Jr.
Baton Rouge
Phone (225) 578-8825
Fax (225) 578-8762

* Includes writs denied, writs not considered, writs dismissed and transferred

** Includes Opinions on appeals, writs, rehearings & supplemental

*** Includes rehearings on writs

Opinions, Rehearing Actions and Writ Actions rendered by 4th Circuit Judges on assignment to the 1st Circuit are excluded from 1st Circuit totals but included in 4th Circuit totals

STATISTICAL DATA

LOUISIANA DISTRICT COURTS Two Year Trend in Activity

DISTRICT	PARISH	2007 Total Filed	2008 Juvenile Filed	2008 Civil Filed	2008 Criminal Filed	2008 + Traffic Filed	2008 Total Filed	JURY TRIALS Civil Filed	Criminal Filed
1	Caddo *	19,891	719	8,910	4,652	5,346	19,627	5	39
	District Totals:	19,891	719	8,910	4,652	5,346	19,627	5	39
2	Bienville	4,607	54	599	739	3,757	5,149	0	3
	Claiborne	6,620	188	353	946	4,496	5,983	1	0
	Jackson	2,106	395	527	561	479	1,962	0	1
	District Totals:	13,333	637	1,479	2,246	8,732	13,094	1	4
3	Lincoln	7,181	712	978	1,711	2,248	5,649	0	2
	Union	3,293	312	856	1,075	879	3,122	1	1
	District Totals:	10,474	1,024	1,834	2,786	3,127	8,771	1	3
4	Morehouse	5,169	493	880	1,428	3,819	6,620	0	4
	Ouachita	40,116	1,757	4,642	7,618	24,557	38,574	7	34
	District Totals:	45,285	2,250	5,522	9,046	28,376	45,194	7	38
5	Franklin	2,478	248	751	878	690	2,567	0	2
	Richland	2,524	175	666	1,152	2,337	4,330	0	1
	West Carroll	1,160	145	331	520	674	1,670	1	0
	District Totals:	6,162	568	1,748	2,550	3,701	8,567	1	3
6	East Carroll	4,824	123	184	396	4,219	4,922	0	2
	Madison	3,173	176	372	507	2,487	3,542	0	1
	Tensas	1,446	31	190	459	660	1,340	0	0
	District Totals:	9,443	330	746	1,362	7,366	9,804	0	3
7	Catahoula	1,922	40	489	320	752	1,601	1	0
	Concordia	3,153	360	775	1,272	633	3,040	0	2
	District Totals:	5,075	400	1,264	1,592	1,385	4,641	1	2
8	Winn	2,196	37	595	738	1,362	2,732	0	1
	District Totals:	2,196	37	595	738	1,362	2,732	0	1
9	Rapides	20,657	1,183	3,880	4,778	12,260	22,101	5	14
	District Totals:	20,657	1,183	3,880	4,778	12,260	22,101	5	14
10	Natchitoches	9,651	2,287	1,347	1,260	6,045	10,939	2	10
	District Totals:	9,651	2,287	1,347	1,260	6,045	10,939	2	10
11	Sabine	6,152	287	842	1,463	3,918	6,510	1	4
	District Totals:	6,152	287	842	1,463	3,918	6,510	1	4
12	Avoyelles	8,591	497	1,741	2,301	3,386	7,925	3	11
	District Totals:	8,591	497	1,741	2,301	3,386	7,925	3	11
13	Evangeline	4,897	577	1,102	991	2,421	5,091	1	7
	District Totals:	4,897	577	1,102	991	2,421	5,091	1	7
14	Calcasieu	25,634	1,865	6,726	5,712	11,652	25,955	7	13
	District Totals:	25,634	1,865	6,726	5,712	11,652	25,955	7	13
15	Acadia	9,688	378	1,911	1,646	5,832	9,767	2	3
	Lafayette **	25,734	2,470	7,464	5,566	13,471	28,971	12	15
	Vermilion	8,835	432	1,705	3,368	5,392	10,897	2	6
	District Totals:	44,257	3,280	11,080	10,580	24,695	49,635	16	24
16	Iberia	12,405	207	2,210	2,498	8,966	13,881	3	6
	St. Martin ***	18,155	227	1,564	1,540	9,200	12,531	4	5
	St. Mary	10,522	569	1,684	3,522	4,942	10,717	3	6
	District Totals:	41,082	1,003	5,458	7,560	23,108	37,129	10	17
17	Lafourche	16,593	751	2,462	4,943	10,260	18,416	2	5
	District Totals:	16,593	751	2,462	4,943	10,260	18,416	2	5
18	Iberville	10,385	261	1,633	1,395	6,985	10,274	2	1
	Pointe Coupee	2,466	176	760	817	1,363	3,116	1	0
	West Baton Rouge	4,048	84	893	1,276	1,941	4,194	1	2
	District Totals:	16,899	521	3,286	3,488	10,289	17,584	4	3
19	East Baton Rouge *	47,114	0	14,109	8,293	32,801	55,203	23	37
	District Totals:	47,114	0	14,109	8,293	32,801	55,203	23	37
20	East Feliciana	3,230	134	886	827	1,285	3,132	1	1
	West Feliciana	1,084	67	378	405	50	900	1	3
	District Totals:	4,314	201	1,264	1,232	1,335	4,032	2	4

LOUISIANA DISTRICT COURTS Two Year Trend in Activity

		2007 Total Filed	2008 Juvenile Filed	2008 Civil Filed	2008 Criminal Filed	2008 † Traffic Filed	2008 Total Filed	JURY TRIALS	
								Civil Filed	Criminal Filed
DISTRICT	PARISH								
21	Livingston	18,434	762	3,990	3,432	9,422	17,606	5	7
	St. Helena	1,523	53	351	831	1,494	2,729	1	2
	Tangipahoa	29,975	703	3,847	4,841	16,524	25,915	1	13
	District Totals:	49,932	1,518	8,188	9,104	27,440	46,250	7	22
22	St. Tammany	46,235	1,618	7,728	9,129	36,192	54,667	13	68
	Washington	3,936	428	1,324	1,400	2,145	5,297	1	16
	District Totals:	50,171	2,046	9,052	10,529	38,337	59,964	14	84
23	Ascension *	5,902	578	3,695	1,652	0	5,925	3	3
	Assumption	4,161	175	718	828	2,415	4,136	1	2
	St. James	5,999	286	1,007	1,149	3,211	5,653	0	2
	District Totals:	16,062	1,039	5,420	3,629	5,626	15,714	4	7
24	Jefferson *	21,450	0	13,586	6,588	0	20,174	17	91
	District Totals:	21,450	0	13,586	6,588	0	20,174	17	91
25	Plaquemines	5,894	84	932	4,258	0	5,274	0	1
	District Totals:	5,894	84	932	4,258	0	5,274	0	1
26	Bossier	23,392	1,666	3,279	9,169	7,846	21,960	1	11
	Webster	7,966	395	1,307	2,378	4,326	8,406	0	2
	District Totals:	31,358	2,061	4,586	11,547	12,172	30,366	1	13
27	St. Landry	22,001	684	2,947	2,455	23,236	29,322	10	32
	District Totals:	22,001	684	2,947	2,455	23,236	29,322	10	32
28	LaSalle	3,932	160	485	1,050	1,546	3,241	1	0
	District Totals:	3,932	160	485	1,050	1,546	3,241	1	0
29	St. Charles	26,552	376	1,576	1,850	26,418	30,220	2	4
	District Totals:	26,552	376	1,576	1,850	26,418	30,220	2	4
30	Vernon	12,408	345	1,518	2,094	8,999	12,956	1	4
	District Totals:	12,408	345	1,518	2,094	8,999	12,956	1	4
31	Jefferson Davis	15,054	111	975	993	11,566	13,645	0	3
	District Totals:	15,054	111	975	993	11,566	13,645	0	3
32	Terrebonne	32,898	626	3,482	5,196	23,171	32,475	8	21
	District Totals:	32,898	626	3,482	5,196	23,171	32,475	8	21
33	Allen	5,323	273	731	944	2,159	4,107	1	5
	District Totals:	5,323	273	731	944	2,159	4,107	1	5
34	St. Bernard	10,745	164	1,901	6,058	6,506	14,629	4	0
	District Totals:	10,745	164	1,901	6,058	6,506	14,629	4	0
35	Grant	4,787	192	672	857	3,273	4,994	0	5
	District Totals:	4,787	192	672	857	3,273	4,994	0	5
36	Beauregard	8,718	126	1,314	844	6,255	8,539	1	3
	District Totals:	8,718	126	1,314	844	6,255	8,539	1	3
37	Caldwell	3,064	97	405	1,101	594	2,197	0	0
	District Totals:	3,064	97	405	1,101	594	2,197	0	0
38	Cameron	6,411	94	242	1,104	3,402	4,842	0	0
	District Totals:	6,411	94	242	1,104	3,402	4,842	0	0
39	Red River	2,300	139	255	402	2,606	3,402	0	1
	District Totals:	2,300	139	255	402	2,606	3,402	0	1
40	St. John the Baptist	10,640	506	2,210	2,830	13,171	18,717	2	10
	District Totals:	10,640	506	2,210	2,830	13,171	18,717	2	10
42	DeSoto	19,329	378	1,096	1,580	14,746	17,800	0	3
	District Totals:	19,329	378	1,096	1,580	14,746	17,800	0	3
	Orleans Civil *	16,106	0	12,977	0	0	12,977	32	0
	Orleans Criminal *	6,980	0	0	7,877	0	7,877	0	197
	District Totals:	23,086	0	12,977	7,877	0	20,854	32	197
Statewide Totals:		739,815	29,436	149,945	160,463	432,788	772,632	197	748

Report of the Total Number of Awards and the Total Amount of Funds Distributed for Wrongful Conviction and Imprisonment¹

Total Number: 5 Total Amount Awarded: \$853,710.64 Total Amount of Funds Distributed: None 1. Pursuant to R.S. 15:572.8, Act 262, Regular Session 2007

* Violations of Traffic, Misdemeanors, and/or Juvenile/Family Laws are Processed by Parish, City, and/or Juvenile/Family Courts. ** Criminal filed for Lafayette denotes the number of defendants, not the number of cases filed. *** In 2008, St. Martin entered their juvenile numbers incorrectly into the new case management system. As a result, these numbers will have to be corrected on a case by case basis. There will be an adjustment to the 2008 total reflected in the 2009 annual report. † DWI is included in the criminal totals beginning in 1990.

JUVENILE JUDICIAL ACTIVITY: FORMAL PROCESS – CALENDAR YEAR 2008

	CADD0			E. BATON ROUGE		
	Filings	Charges	Children	Filings	Charges	Children
Formal FINS	338	201	338	43	89	43
Juvenile Traffic	449	510	449	622	909	622
Juvenile Delinquency	1,103	701	1,103	1,757	2,579	1,757
* Mental Incapacity to Proceed	0	0	0	0	0	0
Interstate compact for Juveniles	0	0	0	0	0	0
Contempt of Court	156	0	42	1,535	1,535	1,535
Child in Need of Care Cases	204		204	120		168
Voluntary Transfer of Custody	56		56	61		92
Jud. Certification of Children for Adoption Cases	11		11	12		15
Surrender of Parental Rights	14		14	68		62
Adoption	93		93	67		77
Child Support	339		0	1,614		0
Mental Health	310		310	1		1
Misdemeanor Prosecution of Adults/Other	0		0	0		0
Minor Marriages	3		0	0		0
Protection of Terminally Ill Children	1		1	0		0
Domestic Abuse	279		0	0		0
Other	23		0	0		0
Subtotal	3,379	1,412	2,621	5,900	5,112	4,372

FAMILY COURT FILINGS

EBR FAMILY COURT	
New Cases Filed	3,929
Divorces Granted	1,670
Rules Set for Hearings	4,739
Cases Dismissed	166
Paternity Cases and State Cases	1,050
Domestic Violence Cases	1,463
Disavowals	1
Annulments	2
Qualified Domestic Relations Orders	143
Stipulated Judgments	1,180
Income Assignments	413
Community Property	155
Joint Custody	36
Ex-Parte Custody	70

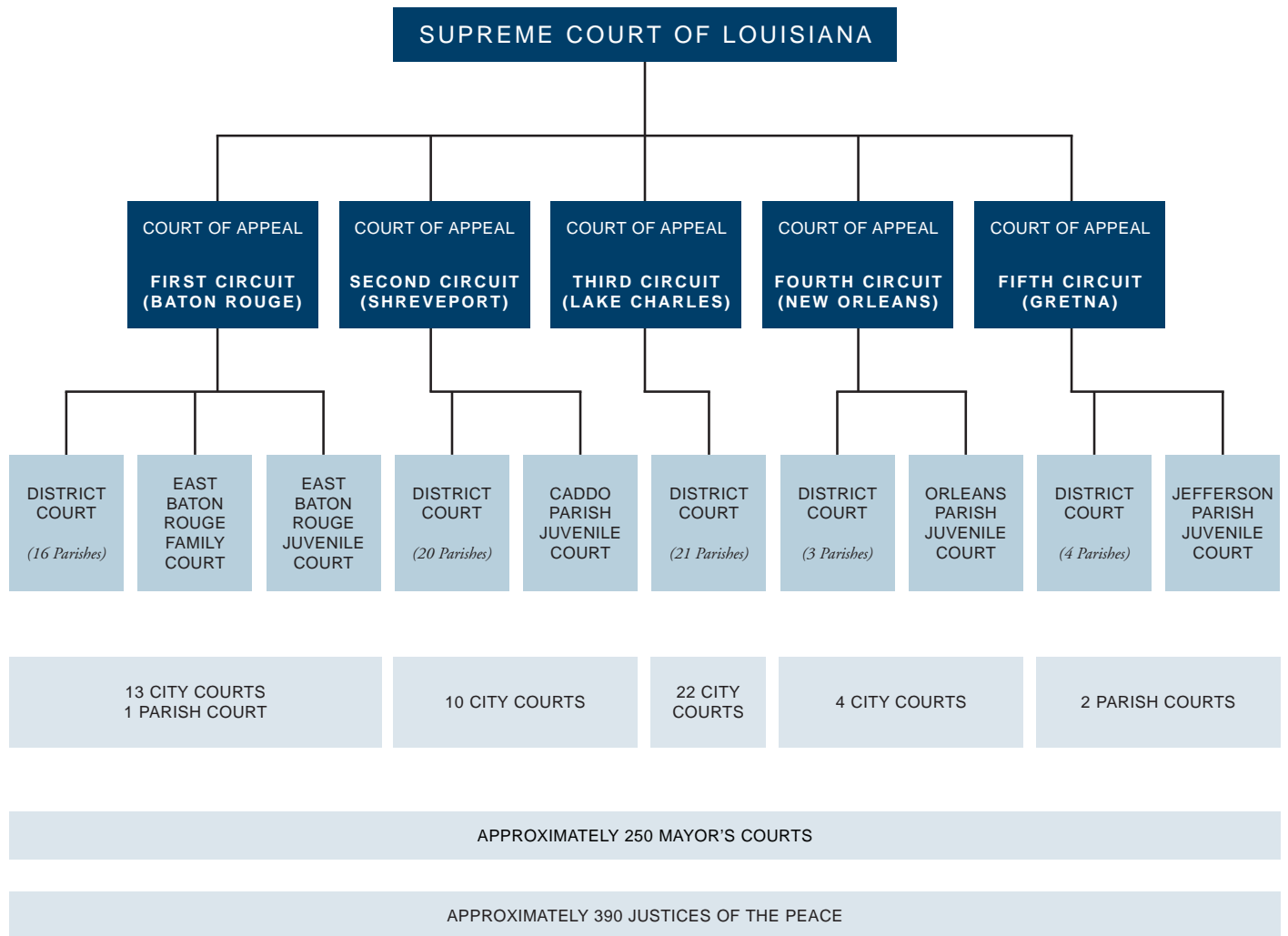
JEFFERSON			ORLEANS			GRAND TOTAL		
Filings	Charges	Children	Filings	Charges	Children	Filings	Charges	Children
348	391	348	23	0	23	752	681	752
581	863	581	367	0	367	2,019	2,282	2,019
1,382	2,172	1,382	710	1,225	869	4,952	6,677	5,111
27	59	27	0	0	0	27	59	27
0	0	0	0	0	0	0	0	0
556	760	556	0	0	0	2,247	2,295	2,133
205		205	83		113	612		690
274		274	23		23	414		445
80		80	0		0	103		106
35		35	16		13	133		124
202		202	58		63	420		435
2,203		0	0		0	4,156		0
0		0	0		0	311		311
101		0	0		0	101		0
2		2	0		0	5		2
0		0	0		0	1		1
0		0	0		0	279		0
0		0	1,073		1,077	1,096		1,077
5,996	4,245	3,692	2,353	1,225	2,548	17,628	11,994	13,233

LOUISIANA CITY AND PARISH COURTS *Cases Processed*

	Filed	Term.	Filed	Term.	Filed	Term.	Filed	Term.	Filed	Term.	Filed	Term.
CITY	CIVIL		CRIMINAL		TRAFFIC*		JUVENILE		TOTAL CASES		OTHER PROCEEDINGS**	
Abbeville	456	328	812	953	3,181	3,274	394	353	4,843	4,908	0	0
Alexandria	2,824	1,695	7,223	4,238	12,929	12,929	0	0	22,976	18,862	0	0
Ascension	483	192	5,347	3,803	14,504	13,519	250	255	20,584	17,769	0	0
Baker	415	317	765	531	6,899	4,247	0	0	8,079	5,095	0	0
Bastrop	1,044	972	863	757	2,389	2,218	61	48	4,357	3,995	882	0
Baton Rouge	12,415	9,800	39,115	33,277	158,371	129,213	0	0	209,901	172,290	49,895	60,997
Bogalusa	423	1,816	1,459	1,398	2,129	2,470	343	214	4,354	5,898	0	0
Bossier City	2,212	1,566	2,959	2,797	23,126	18,175	1,999	2,020	30,296	24,558	389	345
Breaux Bridge	427	347	912	765	1,620	1,408	157	110	3,116	2,630	139	122
Bunkie	99	101	264	266	516	516	172	171	1,051	1,054	0	0
Crowley	404	406	3,758	1,394	6,576	2,832	500	292	11,238	4,924	0	0
Denham Springs	1,691	1,601	2,063	2,061	14,140	12,902	755	726	18,649	17,290	148	148
Eunice	467	294	2,263	1,859	3,542	2,915	291	296	6,563	5,364	0	0
Franklin	437	387	966	1,788	942	902	254	84	2,599	3,161	136	76
Hammond	2,251	1,580	3,552	1,614	13,276	10,650	1,043	617	20,122	14,461	0	0
Houma	3,178	2,172	3,992	3,580	6,795	6,530	1,918	1,327	15,883	13,609	1,107	714
Jeanerette	175	267	630	518	1,461	1,495	347	380	2,613	2,660	0	0
Jeff. 1st Parish Ct.	3,074	4,101	5,830	16,730	76,839	111,015	0	0	82,169	131,846	0	0
Jeff. 2nd Parish Ct.	3,892	4,663	5,824	14,326	53,759	85,874	0	0	63,475	104,863	0	0
Jennings	504	403	371	353	1,635	1,367	0	0	2,510	2,123	0	0
Kaplan	97	64	433	453	569	511	135	133	1,234	1,161	0	0
Lafayette	3,192	3,091	4,056	4,177	19,376	20,354	623	417	27,247	28,039	483	483
Lake Charles	3,418	2,559	3,336	4,386	11,867	12,211	91	112	18,712	19,268	0	0
Leesville	185	44	1,693	1,642	2,601	2,201	74	36	4,553	3,923	0	0
Marksville	718	655	973	889	1,432	1,271	66	58	3,189	2,873	0	0
Minden	566	607	1,290	1,035	1,289	1,240	114	96	3,259	2,978	149	149
Monroe	3,678	1,406	7,636	4,878	28,747	17,273	873	236	40,934	23,793	0	0
Morgan City	538	409	1,299	1,399	1,904	1,863	192	162	3,933	3,833	0	0
Natchitoches	771	260	1,804	1,354	3,651	3,142	288	181	6,514	4,937	0	0
New Iberia	1,125	958	2,129	2,215	5,263	4,903	405	462	8,922	8,538	236	181
N.O. 1st City Ct.	7,461	4,918	0	0	0	0	0	0	7,461	4,918	0	0
N.O. 2nd City Ct.	1,651	1,318	0	0	0	0	0	0	1,651	1,318	0	0
N.O. Municipal	0	0	44,260	30,746	0	0	0	0	44,260	30,746	0	0
N.O. Traffic	0	0	3,806	2,379	145,638	106,891	0	0	149,444	109,270	0	0
Oakdale	277	163	440	22	1,363	1,363	0	0	2,080	1,548	0	0
Opelousas	991	769	3,048	2,799	5,311	4,648	491	520	9,841	8,736	0	0
Pineville	914	526	5,318	4,804	3,868	3,757	0	0	10,100	9,087	0	0
Plaquemine	456	456	481	476	1,014	1,003	95	95	2,046	2,030	0	0
Port Allen	315	154	424	291	7,944	6,470	96	96	8,779	7,011	0	0
Rayne	527	430	745	792	1,667	2,049	97	88	3,036	3,359	0	0
Ruston	1,682	987	1,064	893	2,476	2,211	0	0	5,222	4,091	796	859
Shreveport	10,825	8,441	12,418	11,948	37,537	38,527	0	0	60,780	58,916	29,648	0
Slidell	1,728	1,737	3,750	2,767	9,645	8,154	599	619	15,722	13,277	0	0
Springhill	395	331	1,449	898	1,304	1,304	291	187	3,439	2,720	159	139
Sulphur	962	682	3,128	3,284	10,358	10,566	214	100	14,662	14,632	177	183
Thibodaux	818	149	2,263	1,919	3,125	2,886	364	268	6,570	5,222	0	0
Vidalia	29	15	202	92	777	364	18	12	1,026	483	0	0
Ville Platte	652	477	1,604	1,090	1,583	1,089	131	131	3,970	2,787	0	0
West Monroe	1,679	1,375	2,744	2,566	4,264	5,830	117	110	8,804	9,881	265	0
Winnfield	108	100	941	684	380	263	0	0	1,429	1,047	0	0
Winnsboro	773	281	591	589	535	500	49	54	1,948	1,424	0	0
Zachary	266	195	612	656	1,942	1,885	0	0	2,820	2,736	0	0
STATE TOTALS:	83,668	66,565	202,905	185,131	722,419	689,180	13,907	11,066	1,018,965	951,942	84,609	64,396

* DWI is included in the Criminal Column

** Other proceedings include actions not considered cases, such as post-conviction remedy, preliminary hearings, sentence review and extraordinary writs.



Number of Justices and Judges:	7	Supreme Court
	53	Courts of Appeal
	247	District, Family and Juvenile (includes 11 Commissioners)
	73	City and Parish Courts
	380	Total

Judicial Administrator's Office
The Supreme Court of Louisiana
400 Royal Street, Suite 1190
New Orleans, Louisiana 70130
(504) 310-2550 · www.lasc.org



Annual Report 2008 of the Judicial Council
of the Supreme Court of Louisiana

Judicial Administrator: Hugh M. Collins, Ph.D.

Editor: Valerie S. Willard, JD
Layout and Web Design: Robert Gunn

Statistical Section compiled by: Hugh M. Collins, Ph.D.;
Timothy J. Palmatier, JD, MBA, CPA; Court Management Information
System (CMIS) Staff; Court of Appeal Reporting System (CARS) Staff

This public document was published at a total cost of \$3,623.56. 1,250 copies of this public document were published in this first printing at a cost of \$2.90 per copy. This document was published by the Judicial Administrator's Office, 400 Royal St., Suite 1190, New Orleans, LA, 70130 as the annual report of the Judicial Council under the authority of the Judicial Budgetary Control Board and Supreme Court Rule XXII.