

SUPREME COURT OF LOUISIANA

ANNUAL REPORT 2009

of the Judicial Council of the Supreme Court





THE SUPREME COURT OF LOUISIANA

From left, Justice John L. Weimer, Justice Chet D. Traylor, Justice Bernette J. Johnson, Chief Justice Catherine D. Kimball, Justice Jeffrey P. Victory, Justice Jeannette Theriot Knoll, Justice Greg G. Guidry

CHIEF JUSTICE CATHERINE D. KIMBALL

Fifth Supreme Court District
Ascension, East Baton Rouge, East Feliciana, Iberville, Livingston, Pointe Coupee, West Baton Rouge, and West Feliciana Parishes.*

JUSTICE GREG G. GUIDRY

First Supreme Court District
Jefferson, Orleans, St. Helena, St. Tammany, Tangipahoa, and Washington Parishes.*

JUSTICE JEFFREY P. VICTORY

Second Supreme Court District
Allen, Beauregard, Bossier, Caddo, DeSoto, Evangeline, Natchitoches, Red River, Sabine, Vernon, and Webster Parishes.*

JUSTICE JEANNETTE THERIOT KNOLL

Third Supreme Court District
Acadia, Avoyelles, Calcasieu, Cameron, Jefferson Davis, Lafayette, St. Landry, and Vermilion.*

JUSTICE CHET D. TRAYLOR

Fourth Supreme Court District
Bienville, Caldwell, Catahoula, Claiborne, Concordia, East Carroll, Franklin, Grant, Jackson, LaSalle, Lincoln, Madison, Morehouse, Ouachita, Rapides, Richland, Tensas, Union, West Carroll, and Winn Parishes.* Retired May 31, 2009.

JUSTICE JOHN L. WEIMER

Sixth Supreme Court District
Assumption, Iberia, Jefferson, Lafourche, Plaquemines, St. Bernard, St. Charles, St. James, St. John the Baptist, St. Martin, St. Mary, and Terrebonne Parishes.*

JUSTICE BERNETTE J. JOHNSON

Seventh Supreme Court District
Jefferson and Orleans Parishes.*



Justice Marcus R. Clark, Fourth Supreme Court District. Term of office began November 19, 2009.



Pro Tempore Justice Benjamin Jones, Fourth Supreme Court District, June 1 - November 18, 2009.

ABOUT THIS REPORT

The Supreme Court Annual Report is a useful guide to judicial personnel and contacts throughout the state, as well as an overview of the Court's progress in 2009, and includes maps of electoral districts for the Supreme Court, the Courts of Appeal, and District Courts.

The **STATISTICAL DATA** section summarizes two-year activity trends in juvenile, civil, criminal and traffic categories for courts at all levels in the state.

RESOURCES ON THE WEB AT WWW.LASC.ORG

The **2009 LOUISIANA SUPREME COURT ANNUAL REPORT** and the **GUIDE TO LOUISIANA COURTS** featuring a list of judges, clerks and administrators (complete with contact phone numbers) for the Courts of Appeal, District Courts, and City and Parish Courts statewide are now available on the Louisiana Supreme Court web site at www.lasc.org/press_room/publications.asp.

* See Court District Maps on pages 6-7.

A YEAR OF MOVING FORWARD

It has been a year since Chief Justice Catherine D. Kimball was inducted as the 24th Chief Justice of the Louisiana Supreme Court. In 2009, Justice Chet Traylor of the Court's Fourth District retired, and Justice Marcus Clark was welcomed to the Court as the Fourth District's new Justice. In the interim, Judge Ben Jones of the 4th Judicial District Court sat as Justice *pro tempore*, and the Court is indebted to Judge Jones for his excellent service and invaluable contributions during his *pro tempore* term.

2009 has been a year of moving forward. Last January, during their annual retreat, the Justices of the Louisiana Supreme Court adopted a simple, but profound, vision statement for the Court:

We envision hard working judges, who treat all within their purview with kindness, fairness and respect, and who require that same treatment by their employees and the attorneys who appear before the court; and a judiciary that is recognized by our state and nation as having those qualities. We envision a judiciary that handles its work efficiently and appropriately and cares as deeply about the disposition of a child abuse, a juvenile or a custody case as it does about a high profile civil lawsuit.

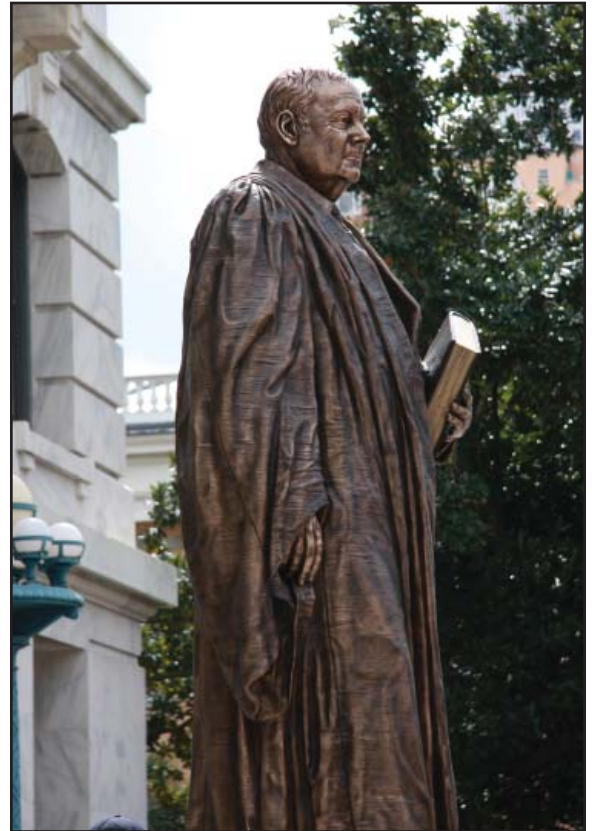
This vision is shared not only by the Supreme Court Justices but by Louisiana's dedicated judges at all levels of the state's judiciary. Much time was spent in 2009 to implement measures to make this vision a reality and to move forward.

The Court's first implementation priority is "improved case management" at all levels of the judiciary. To demonstrate the Court's emphasis on this issue, the Court retained consultants with the National Center for State Courts to examine the

case management processes of the Louisiana Supreme Court and to offer recommendations on how the public's business could be handled in a more efficient and timely manner. A draft report has been completed with several excellent recommendations, and the Court will study it closely and take appropriate action in the near future. Further, the Court has reviewed its own internal departments with an eye toward improving efficiency and competency. Management Training has been instituted to assist court managers to better handle their supervisory functions and responsibilities and assist staff in achieving their top job performance. The Court has also implemented some insightful suggestions made by its employees to improve internal communications.

This year, the Supreme Court implemented stringent rules requiring financial disclosure by state judges, and the first reporting deadline was May 15th. Canon 6 of the Code of Judicial Conduct governing the receipt of gifts by state judges was also reviewed and strengthened. The Court appreciates the timely compliance with these new rules by state judges.

In trying to make the Court's vision a reality, it is faced with the negative public perception of the



judicial branch of government. To address this concern, in 2009, the Court appointed the Supreme Court Ad Hoc Committee to Study Perceptions of the Legal System, which is comprised of high-level representatives from all branches of government, the private sector, the business community, labor interests, and the state's Bar Association. The Committee was formed to consider how to respond to issues raised in reports such as the U.S. Chamber of Commerce's annual ranking of states' litigation systems, the American Tort Reform Association's Judicial Hellholes report, and other reports that deal with state judges and courts. Louisiana typically does not fare well in these reports, but the Committee has discovered that the findings in some of them may not be reliable. That said, members are carefully reviewing these reports and are working to use data contained in them and other sources to develop strate-

gies for improving the perceptions and the operations of the justice system. The Committee has met several times and has offered significant suggestions towards improving the image of Louisiana's legal system. Even though the members come to the table with differing perspectives, they all share a love of our state and our profession, and a commitment to try to improve its image. The work of the Committee will continue in 2010.

On the national stage, there has been an increase in the number of *pro se* litigants that are using the court system. These are litigants that seek to file suit or pursue relief from a court without the assistance of an attorney. This national trend is also evident in Louisiana. Obviously, as the cost of litigation continues to rise and as the economy weakens, more and more citizens who must utilize the courts are trying to handle legal matters on their own. The Supreme Court, in concert with the Louisiana State Bar Association, has formed a committee to explore methods of assisting those *pro se* litigants in navigating the legal system. In states such as Louisiana where poverty might play a widespread yet unfortunate role in the lives of its citizens, it is imperative to move in this direction to make courts available and accessible to all of Louisiana's citizens, no matter what their means. The Committee, chaired by Judge Harry Randow of the 9th Judicial District Court, has already met several times and adopted the following goals: to recommend to the Court ways to improve court rules for *pro se* litigants; increase education and training opportunities for attorneys, judges and court staff; collect data regarding the number of *pro se* litigants and the types of cases filed by such litigants; and increase the number of standard legal forms and documents available to *pro se* litigants. The Louisiana State Bar Association is to be commended for its leadership on this issue, especially through the LSBA's Access to Justice Committee.

The Court has also appointed a

Supreme Court Committee to Study Post-Conviction Procedures, chaired by Justice Jeannette Theriot Knoll. The purpose of this Committee is to conduct a comprehensive review and study of the laws, processes and procedures relevant to Louisiana post-conviction proceedings in a collaborative method to determine the cause, if any, of delays or practices unfair to the relator or the State, and to make recommendations as to how to bring post-conviction proceedings to a fair and prompt finality of judgment. The Committee members were drawn from a broad range of individuals knowledgeable about the post-conviction process and include representatives of the defense and prosecution bars, the state judiciary, the legislature and the law schools. The Committee will continue its important work in 2010.

On the technology front, the Court continues to regularly "live stream" its oral arguments on its web site, so anyone can watch them from a computer. The Court's web site is also now translatable into 31 different languages. This past year, the Court continued to take steps toward implementing an e-filing system where court filings can be made via e-mail in the near future.

Work continued in 2009 on the Court's ERP, the "Enterprise Resources Planning System," which includes installation of new software and training of employees, and which will revolutionize the way the Court handles its internal business services and human resources record keeping. The ERP is another significant step forward in improving internal operations of the Court, and special thanks are owed to the Court staffers who are devoting countless hours to making the ERP project a success.

During 2009, the Court continued to work closely with the Louisiana State Bar Association and its officers on many issues, including the recent changes to the rules on Lawyer Advertising. The LSBA officers were the first to have lunch with the Justices as part of a new initiative where the

Justices regularly invite different groups to lunch at the Court for open discussion on systemic improvements. Recent guests have included the members of the Judiciary Commission, members of the Committee on Bar Admissions, and the judges of the Fourth Circuit Court of Appeal.

This is just a snapshot of the work of the Court in 2009, with the assistance of many members of the state bench and state bar, to move the state judiciary forward. As always, the Court is receptive to suggestions and recommendations as to how we may continue to strive to achieve our vision, so please feel free to contact Chief Justice Kimball with any ideas or suggestions.

Chief Justice Kimball has the distinct pleasure of submitting to the Supreme Court of Louisiana, to the Board of Governors of the Louisiana State Bar Association, to the citizens of Louisiana, and to other interested parties the Annual Report of the Supreme Court of Louisiana for 2009, including the reports of the Judicial Council, the Judicial Administrator's Office, the Clerk of Court, the Law Library of Louisiana, the Louisiana Judicial College, and the Judiciary Commission of Louisiana, as well as statistical information on the state judiciary reflecting the work of the past year. The report also includes information from the Committee on Bar Admissions and the Louisiana Attorney Disciplinary Board, entities that operate under the auspices of the Supreme Court. All who were involved in our continuing efforts throughout 2009 to improve judicial administration are to be congratulated.

Catherine D. Kimball
Chief Justice
Louisiana Supreme Court

2009: BUILDING STEPS TOWARDS THE FUTURE

This section highlights initiatives of the Judicial Administrator's Office, the managerial arm of the Louisiana Supreme Court which serves as the staffing and fiscal agent for the Judicial Council and court-appointed task forces and committees. This section also includes information about the Law Library, Judicial College, Bar Admissions, Clerk of Court's Office, Attorney Disciplinary Board, and the Judiciary Commission.

CHILDREN AND FAMILIES

By administering statewide programs the Court enhances judicial services to children and families.

- The Court Improvement Program (CIP) administers three federal grants for improving the adjudication of child abuse and neglect cases. Among other initiatives, CIP is providing training, technical assistance and oversight for the rollout of the new statewide system of representation in child abuse cases. CIP is also involved in the federal Child & Family Services Review of the state foster care system, which specifically includes court and legal system involvement.
- The Families in Need of Services (FINS) Assistance Program provides fiscal and programmatic oversight of funds allocated to support mandated informal FINS processes in every judicial district statewide. In addition, FINS continues to work with the MacArthur Foundation Models for Change program, which is piloting best practices initiatives in six areas of the state.
- The CASA Assistance Program provided fiscal and programmatic oversight of funding to support 18 Court Appointed Special Advocate programs across the state serving 55 parishes and 35 judicial districts.
- Integrated Juvenile Justice Information System (IJJIS), a web-based juvenile court case management and data reporting system, is fully developed

and has been successfully piloted in Caddo Parish Juvenile Court.

DRUG COURTS

Drug courts combine intensive substance abuse treatment with rigorous court oversight, community supervision and regular and frequent drug testing to ensure program accountability and the best outcomes for offenders with substance abuse problems. The Supreme Court Drug Court Office (SCDCO) is the fiscal agent for funds allocated to local drug court programs throughout the state.

- In 2009, Louisiana's 48 juvenile and adult drug courts and one family dependency court spent \$15.7 million in state and federal funds for drug testing, treatment and supervision of about 3,300 clients per month.
- A significant achievement in 2009 was the award of a Louisiana Commission on Law Enforcement grant which was dedicated to opening a new adult drug court, now in operation, in the 25th Judicial District.
- The SCDCO performed ongoing reviews of court data to track recidivism and other key outcomes; continued to work with the MacArthur Foundation on the development and deployment of evidence-based practices in juvenile court; continued



the successful drug court judicial ride-along program; and coordinated a three-day training for 86 current drug court judges and judges interested in starting a drug court.

COURT MANAGEMENT INFORMATION SYSTEMS & LOUISIANA PROTECTIVE ORDER REGISTRY

Court Management Information Systems (CMIS) now houses some 3,734,161 filing and disposition records in the criminal repository. The Criminal Records Project sends final dispositions to the Department of Public Safety for inclusion in a computerized criminal history database; 12,613 records were posted by the end of 2009. CMIS posted 114,357 qualifying felony dispositions records to the FBI National Instant Check System database. CMIS receives criminal data from 61 of 64 district courts and traf-

fic dispositions from 41 state courts.

- CMIS dispersed nearly \$140,000 in federal grants to seven district courts for the acquisition and installation of criminal case management systems to report criminal filing and disposition data.
- Site visits and training sessions were conducted by CMIS to familiarize and assist eight district courts and 12 traffic courts with the proper methods for reporting filings and disposition information.
- In 2009, the Louisiana Protective Order Registry (LPOR) received 21,592 court orders prohibiting domestic abuse and dating violence.
- The LPOR staff responded to 803 order verification requests, providing this essential service 24 hours a day, seven days a week to the FBI as well as to state and local law enforcement.
- LPOR's educational programs reached about 720 court and law enforcement officials.

COMMUNITY RELATIONS

The outreach division of the Supreme Court oversees communications, events, courthouse tours and other public involvement, including the web site (www.lasc.org), media relations and court publications. Significant accomplishments in 2009:

- Coordinated two special events, including the Induction Ceremony of Justice Catherine D. "Kitty" Kimball as Chief Justice of the Louisiana Supreme Court, and a two-day justices retreat, which provided an opportunity for the justices and key staff to review and exchange ideas regarding day-to-day Court operations.
- Conducted nearly 50 court tours involving 822 visitors from schools of all levels, law firms, international jurists and lawyers, jurists and lawyers from other states, civic organizations, legislators and businesses.
- Organized two 2009 Law Day activities at the Supreme Court. The first included a mock trial for elementary students that involved judges from three courts. The mock trial was presided over by Supreme Court Justice Bernette J. Johnson, the script was developed by Fourth Circuit Court of

Appeal Judge Terri Love and Orleans Parish Juvenile Court Judge Ernestine Gray assisted with the students. The second involved two mock trials conducted by Project L.E.A.D. (Legal Enrichment And Decision-making) elementary students, and which were presided over by Supreme Court Justice John Weimer and Fourth Circuit Court of Appeal Judge Michael Kirby, respectively.

NEW JUDGESHIPS

In 2009, the 7th, 23rd, and 27th Judicial Districts and the Alexandria City Court each requested one new judgeship but withdrew their requests; the 14th Judicial District requested one new judgeship which was not recommended by the Judicial Council.

LAW LIBRARY

The Law Library of Louisiana is rich in primary sources of Louisiana and United States law and reaches out in many ways to make the law accessible to the Supreme Court Justices, their law clerks, court staff, members of the bar and the general public. As the only public law library for the state, the library received a 13% increase in reference questions in 2009—a total of 11,119—with the majority of those coming from outside users. Among 2009 other milestones:

- The Law Library sponsored two free continuing legal education (CLE) programs on the topic of Abraham Lincoln to mark Law Day and the bicentennial birth of our 16th president. Another free CLE program reviewed the vast digital collection of maps contained in the United States Serial Set. All three CLE programs were well-attended by both members of the bar and the general public.
- Two new exhibits opened in 2009. The first focused on Abraham Lincoln and his life as a country lawyer, a politician and a president, along with images of Lincoln in popular culture. The second exhibit opened for All Saints Day and featured photos of interesting tombstones of former Supreme Court justices.
- The staff continued to add carefully selected books and other materials to

enhance the library collection with a total of 3,426 new volumes added in 2009, including 852 new titled books.

JUDICIAL COLLEGE

Over 750 members of the judiciary took part in Judicial College sessions which featured some 50 speakers on continuing legal education topics targeted to keep judges abreast of important developments in key areas of law.

- Among the topics: 1) juvenile law and juvenile justice reform sessions reviewed service initiatives for children and families, representation issues in child in need of care and delinquency cases, impact of legal and street drugs and also effective community-based treatment for addictive disorders; 2) recent developments in criminal law and procedure looked at issues affecting the military and issues of sexual violence; 3) recent developments in tort law, civil procedure, judicial ethics and best practices were also revisited in 2009.
- In 2009, the Judicial College also co-sponsored with the National Judicial College a three-part special program on Capital Litigation.

BAR ADMISSIONS

In 2009, the Committee on Bar Admissions administered exams in February, resulting in a 67% pass rate, and in July, resulting in a 69% pass rate. A total of 725 new attorneys were admitted to the Louisiana Bar in April and October ceremonies.

- Committee staff reached out to law schools by making presentations and providing individualized assistance to students preparing for the bar examination application process.
- Technological services were enhanced to offer more user-friendly and uniform handling of bar examination registration and application.
- Alternate scoring systems, examination formats and grading methods recommended by the National Conference of Bar Examiners were explored by the Committee.

ATTORNEY DISCIPLINARY BOARD

Improvements to both the Louisiana

For the *Guide to Louisiana Courts*, a directory of judges, clerks of court and court administrators, please see our electronic annual report at www.lasc.org/press_room/annual_reports/default.asp.

lawyer disciplinary system and bar admissions process have resulted in a stronger, more informed and better regulated bar than at anytime in history. In 2009, the Louisiana Attorney Disciplinary Board and the Office of Disciplinary Counsel closed out two decades of lawyer regulation with an impressive record.

- In 2009, the total number of complaints alleging lawyer misconduct was 3,075. More than one-third were screened out after initial review, 350 were referred to the Louisiana State Bar Association’s Practice Assistance Counsel for remedial assistance instead of discipline and the nearly 1,500 remaining matters received full investigative efforts.

- Lawyers were not immune to the nation’s financial crisis in 2009. An unfortunate by-product was the increase in the number of instances of lawyers converting or otherwise mishandling client funds. Through the use of client trust account overdraft notification, the Office of Disciplinary Counsel aggressively addressed the inappropriate use of client funds by lawyers.

- In anticipation of new lawyer advertising rules promulgated in 2009, the Office of Disciplinary Counsel created a panel to screen lawyer advertising complaints.

CLERK OF COURT

In 2009, 2,780 cases were filed, down from 3,014 cases in 2008. The Court disposed of 2,801 cases in 2009, a minimal decrease of 33 less dispositions than in 2008. Due to the decreased number of filings, however, the net clearance rate for the year was 101%. Among key responsibilities of the Clerk of Court in 2009:

- Participated in the enterprise resource planning (ERP) vendor selection process as the Court moved toward adopting an integrated computer-based system designed to manage financial resources, materials and

human resources.

- Oversaw courthouse maintenance and improvements involving roof repairs, basement waterproofing, a new security system and the installation of a Wellness Center.
- Issued Certificates of Good Standing. The demand for issuance of Certificates of Good Standing continued to drop in 2009. 4,661 certificates were issued in 2009 as compared to 4,909 in 2008.
- Managed logistics for 273 events hosted by the Court— Court conferences, Oral Argument days and other meetings.
- Began pilot testing of e-filing with the Office of Disciplinary Counsel and the Disciplinary Board.

JUDICIARY COMMISSION

The Judiciary Commission of Louisiana received and docketed 664 complaints lodged against judges and justices of the peace in 2009. In addition, 300 prior complaints filed in 2008 were pending January 1, 2009.

- Of the 664 complaints filed and docketed in 2009, 396 were screened out as not within the jurisdiction of the Commission, or without merit or sufficient corroborating evidence. The remaining 268 cases were reviewed to consider the need for investigation. During 2009, 30 of

those cases required in-depth investigation.

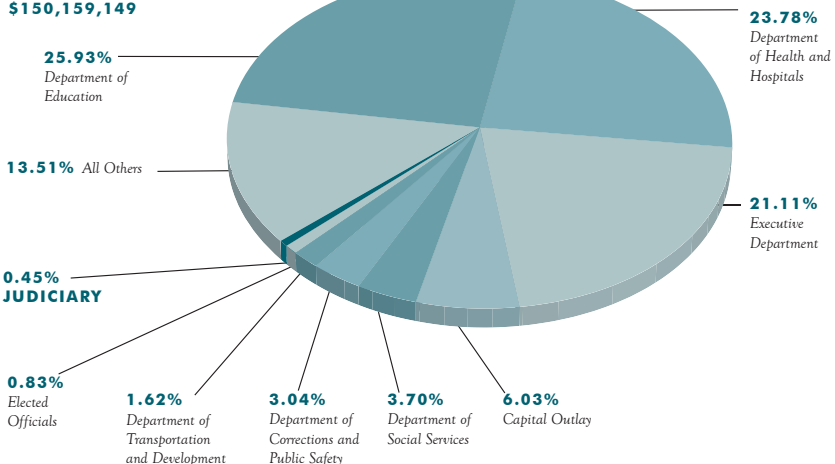
- In 2009, the Commission filed a formal charge in one case and lost jurisdiction in three cases because the judges retired to avoid proceedings.
- In 2009, the Supreme Court removed one judge from judicial office and suspended another judge for 30 days without pay. The Supreme Court also publicly censured one judge and found judicial misconduct in one case that did not warrant the imposition of disciplinary sanctions.
- The Commission had 274 cases pending as of December 31, 2009, having disposed of 690 cases during the year. There were no cases pending before the Supreme Court at year’s end.

JUDICIAL BUDGET

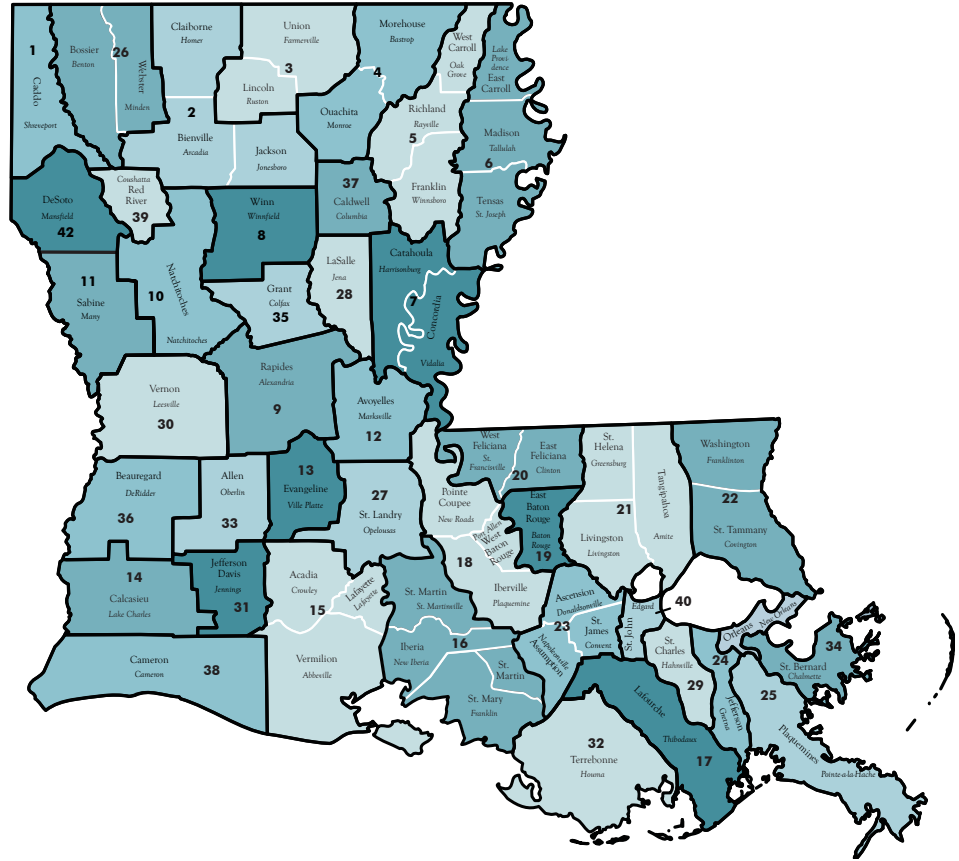
Louisiana does not have a unified state court funding system. Operations of district, parish and city courts are primarily funded by local governments. An annual legislative appropriation funds the operations of the Louisiana Supreme Court, the five circuit courts of appeal, and the salaries of the Supreme Court Justices, courts of appeal judges, and district court judges, including family and juvenile courts. The state also funds a portion of the salaries of parish and city court judges, and the compensation of retired and *ad hoc* judges. In 2009, 0.45% of the state’s general fund was appropriated to the budget of the state judiciary.

LOUISIANA STATE BUDGET 2009-2010

Total State Budget: **\$33,360,513,623**
 Judiciary Budget: **\$150,159,149**



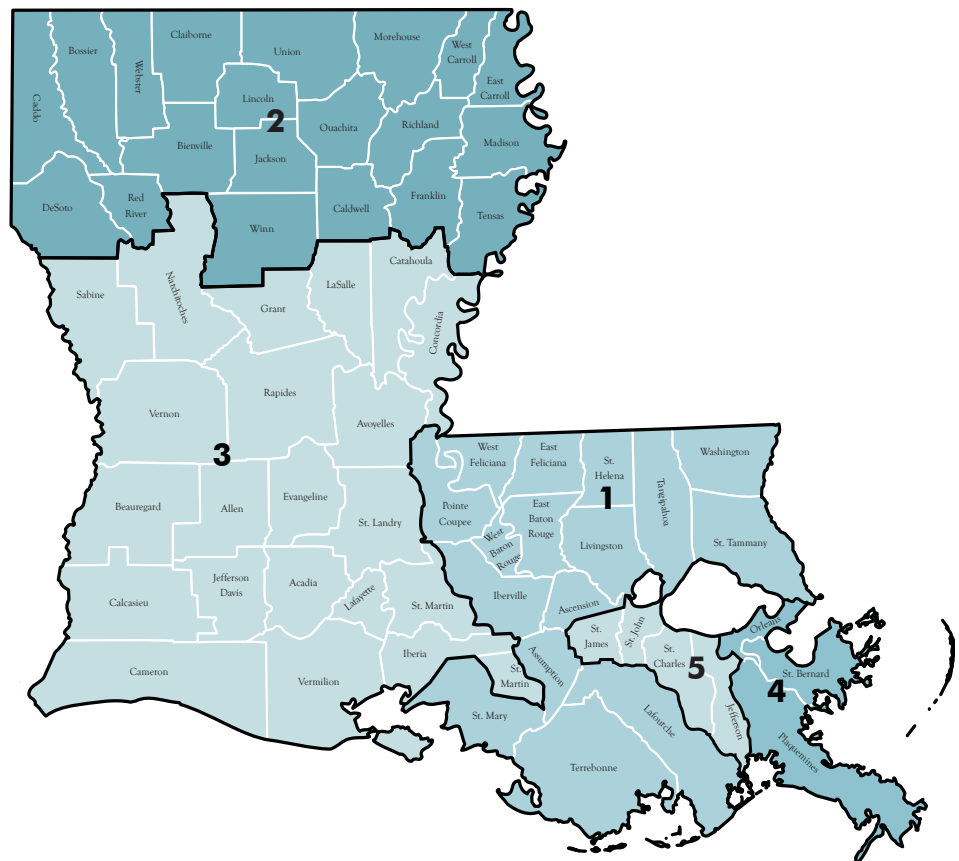
**LOUISIANA DISTRICT COURTS
JUDICIAL DISTRICTS**

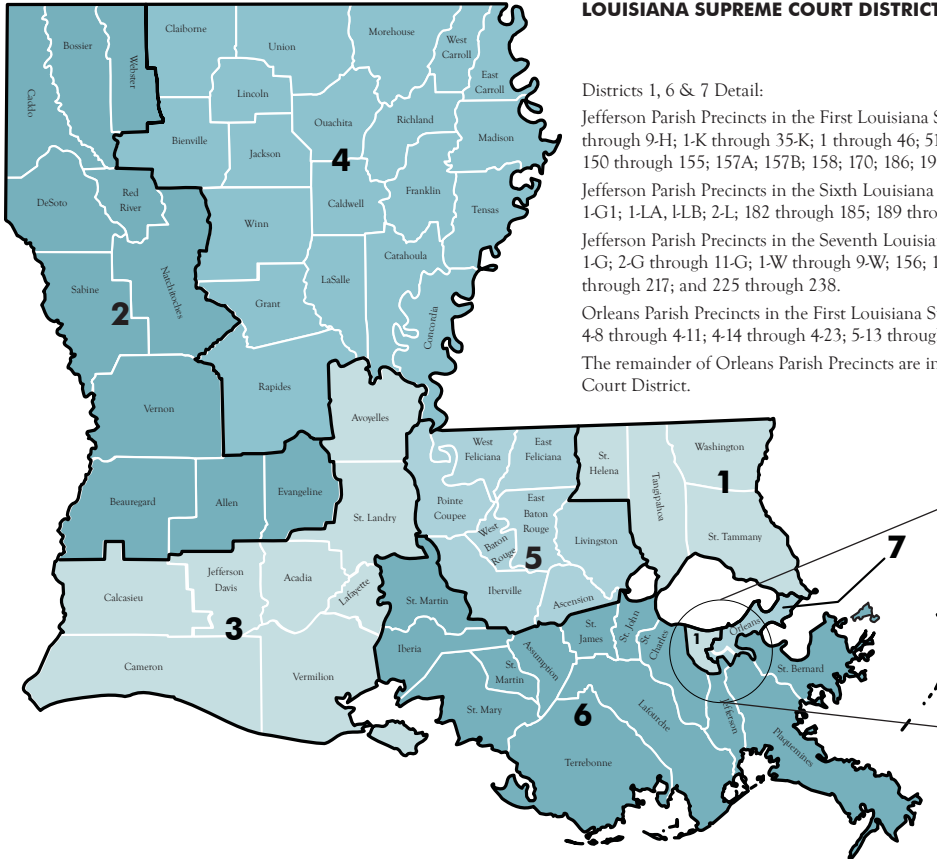


* ACT 621 of 2006 Regular Legislative Session reorganizes and consolidates the Orleans Parish civil and criminal courts to 41st Judicial District Court by January 1, 2010; consolidates civil and criminal sheriffs by January 1, 2010; consolidates Orleans Parish civil, criminal, juvenile, 1st City and 2nd City Courts judicial expense funds by January 1, 2009; abolishes the recorder of mortgages, register of conveyances and notarial archives by January 1, 2009, and merges those offices with the Clerk of Civil District Court until the Clerk of the 41st Judicial District Court is created January 1, 2010; consolidates Orleans Parish Juvenile Court with the 41st Judicial District Court effective January 1, 2015. ACT 873 of the 2008 Regular Legislative Session amends ACT 621 to change the effective date of January 1, 2010 to be December 31, 2014.

** ACT 416 of 2007 Regular Legislative Session splits the 11th Judicial District Court to create a new judicial district comprised of DeSoto Parish as the 42nd Judicial District.

**LOUISIANA COURTS
OF APPEAL CIRCUITS**





LOUISIANA SUPREME COURT DISTRICTS Effective January 1, 1999

Districts 1, 6 & 7 Detail:

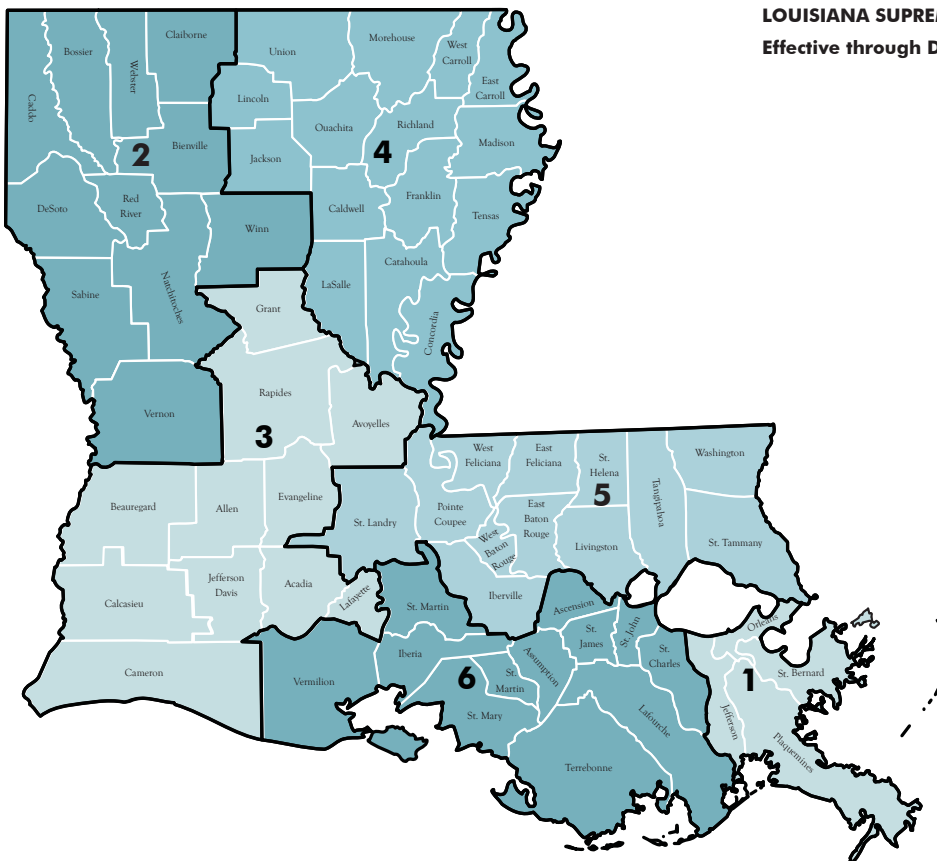
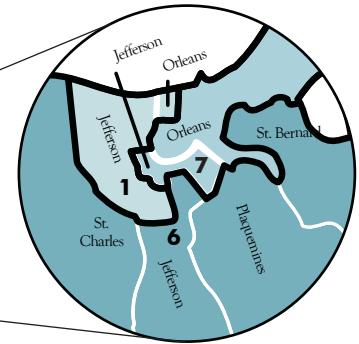
Jefferson Parish Precincts in the First Louisiana Supreme Court District are 1-H through 9-H; 1-K through 35-K; 1 through 46; 51 through 108; 115 through 138; 150 through 155; 157A; 157B; 158; 170; 186; 198 and 199.

Jefferson Parish Precincts in the Sixth Louisiana Supreme Court District are 1-G1; 1-LA, 1-LB; 2-L; 182 through 185; 189 through 197; and 246A through 250.

Jefferson Parish Precincts in the Seventh Louisiana Supreme Court District are 1-G; 2-G through 11-G; 1-W through 9-W; 156; 171 through 181; 187; 188; 210 through 217; and 225 through 238.

Orleans Parish Precincts in the First Louisiana Supreme Court District are 3-20; 4-8 through 4-11; 4-14 through 4-23; 5-13 through 5-18; and 17-17 through 17-21.

The remainder of Orleans Parish Precincts are in the Seventh Louisiana Supreme Court District.



LOUISIANA SUPREME COURT DISTRICTS Effective through December 31, 1998

BEHIND THE COURTS' SUCCESS

Dozens of people, working together, have made the accomplishments of 2009 possible. Some of them are Court staff, some are members of councils and commissions. Their efforts have enabled the progress of the Louisiana court system and of justice in the State.

MEMBERSHIP OF THE JUDICIAL COUNCIL

Hon. Catherine D. Kimball, Chair
Chief Justice, Supreme Court of Louisiana
 Hon. Bernette J. Johnson
Justice, Supreme Court of Louisiana
 Honorable Henry N. Brown, Jr.
representing Conference of Court of Appeal Judges
 Honorable Billy Ezell
representing Conference of Court of Appeal Judges
 Honorable Mary Hotard Becnel
representing Louisiana District Judges Association
 Honorable Raymond S. Childress
representing Louisiana District Judges Association
 Honorable George Murray
representing Louisiana City Judges Association
 Honorable Lilynn Cutrer
representing Louisiana Council of Juvenile and Family Court Judges
 Larry Feldman, Jr., Esq.
representing Louisiana State Bar Association
 Jonathan Ryan Katz, Esq.
representing Young Lawyers Section of the LSBA
 J. David Garrett, Esq.
representing Louisiana State Law Institute
 Honorable Julie Quinn
State Senator
 Honorable Cedric Richmond
State Representative
 Honorable Robert W. Levy
representing Louisiana District Attorneys Association
 Audrey A. McCain, Esq.
representing the Louisiana State Bar Association
appointed by the Louisiana Supreme Court
 Honorable Charles J. Jagneaux
representing Louisiana Clerks of Court Association
 Mr. Fred Skelton
Citizen Representative

EX-OFFICIO MEMBERS OF JUDICIAL COUNCIL

Justice Jeffrey P. Victory
 Justice Chet D. Traylor
 Justice Jeannette Theriot Knoll
 Justice John L. Weimer
 Justice Greg G. Guidry

STAFF OF JUDICIAL COUNCIL

Hugh M. Collins, Ph.D.
Judicial Administrator
Supreme Court of Louisiana
 Scott Griffith, Esq.
Deputy Judicial Administrator
Supreme Court of Louisiana

STATISTICAL OVERVIEW

The statistical information in this section was compiled from data submitted to the Judicial Administrator's Office by the various courts of Louisiana during the calendar year 2009.

SUPREME COURT

In 2009, 2,780 cases were filed, down from 3,014 cases in 2008. The Court disposed of 2,801 cases in 2009, a minimal decrease of 33 less dispositions than in 2008. Due to the decreased number of filings, however, the net clearance rate for the year was 101%.

COURTS OF APPEAL

In 2009, there were 7,812 filings in the Louisiana courts of appeal. The 2009, filings were 4.65% lower than those in 2008. In total, 2,338 opinions were rendered during 2009, an increase of 1.04% compared to 2008. The number of opinions rendered per judge totaled 57 in the First Circuit, 41 in the Second Circuit, 46 in the Third Circuit, 36 in the Fourth Circuit and 38 in the Fifth Circuit.

DISTRICT COURTS

During 2009, there were 855,829 filings in the district courts, an increase of 78,586 filings compared with 2008 (a 10.11% rise). Juvenile filings increased by .99% over 2008 to 29,680. 2009 criminal filings were up by 7.03% (an increase of 11,593); civil filings increased by 2.82% (4,220 more); and traffic filings were up by 14.43% (a rise of 62,483).

CITY AND PARISH COURTS

Filings in Louisiana city and parish courts increased by 4.00%, from 1,018,965 filings in 2008 to 1,059,702 filings in 2009.

STAFF OF THE JUDICIAL ADMINISTRATOR'S OFFICE



Hugh M. Collins, Ph.D.
Judicial Administrator

Timothy J. Palmatier, JD, MBA, CPA
Chief Deputy Judicial Administrator
 Lauren McHugh Rocha, JD
General Counsel

DEPUTY JUDICIAL ADMINISTRATORS

Chris Andrieu
 John S. "Chip" Coulter, JD
 Rose Marie DiVincenti, CCR, RPR
 Scott Griffith, JD, MPA
 Kären Hallstrom, JD, MSW
 Anna Paxton, CCP
 Nancy E. Rix, JD
 Darryl M. Schultz
 Terence Sims, CPA, CFE
 Julia C. Spear, JD
 Valerie Willard, JD

SUPREME COURT OF LOUISIANA *Two Year Trend in Activity*

	2008 Total	2009 Total	2009 Civil	2009 Criminal
APPEALS				
Filed	15	14	11	3
Dismissed	3	8	6	2
Opinions Rendered				
With written opinions	16	7	1	6
Per curiams	8	7	6	1
WRITS				
Applications Filed (Except Prisoner Pro Se)	1,535	1,510	987	523
Prisoner Pro Se Writs	1,308	1,036	59	977
Granted	516	336	100	236
To be argued	67	59	40	19
With orders & transferred	449	277	60	217
Dismissed	43	29	18	11
Not Considered	73	64	43	21
Denied	2,030	2,085	906	1,179
Opinions Rendered	45	54	44	10
REHEARINGS				
Applied for	111	67	54	13
Granted	6	3	3	0
Denied/Dismissed	56	133	56	77
Opinions Rendered	2	0	0	0
ORIGINAL JURISDICTION				
Petitions Filed	156	212	212	0
Opinions Rendered	3	7	7	0
Other Actions	145	190	190	0
OTHER MATTERS				
Filed	0	8	7	1
Opinions Rendered	0	0	0	0
Other Actions	26	48	8	40
OTHER PER CURIAM OPINIONS RENDERED	178	210	171	39
TOTAL FILINGS	3,014	2,780	1,276	1,504
Per Justice	431	397	182	215
TOTAL OPINIONS RENDERED	67	68	52	16

The Supreme Court has exclusive original jurisdiction in cases involving disciplinary actions against lawyers and judges, appellate jurisdiction in capital cases where the death penalty has been imposed and in cases in which a law or ordinance has been declared unconstitutional, as well as supervisory jurisdiction over all courts.

THE LAW LIBRARY OF LOUISIANA STAFF

Georgia Chadwick, MLIS
Director, Law Library of Louisiana
 Marie Erickson, JD, MLS
Head of Public Services
 Miriam Childs, MLS
Head of Technical Services/Documents
 Katherine Nachod, MLS
Reference/Electronic Services Librarian
 Jennifer Creevy, MLS
Serials/Acquisitions Librarian
 Tara Lombardi, MLS
Reference/Collection Development Librarian
 Ruth Mahoney
Public Services Library Associate
 Daphne Tassin
Technical Services Library Associate
 Jason Kruppa
Administrative Assistant

FRIENDS OF THE LAW LIBRARY BOARD

Judith Gainsburgh, *Chair*
 David Dalia
 Anthony J. Gagliano
 Cameron Gamble
 T. Jeffery Gregoire
 Rowena Jones
 Judge Rosemary Ledet
 A.J. Levy
 Judge Patricia R. Murray
 Margaret Woodward
 Valerie Willard

COMMITTEE ON BAR ADMISSIONS

Richard A. Goins
Chairman
 Lawrence J. Centola, Jr.
Director of Character & Fitness
 Robert J. David, Jr.
Director of Accommodations
 S. Maurice Hicks
Director of Testing
 J. Patrick Beauchamp
Examiner—Civil Code I
 Carlton “Trey” Jones, III
Examiner—Civil Code II
 Leland David Cromwell
Examiner—Civil Code III
 Robert E. Landry
Examiner—Louisiana Code of Civil Procedure
 Mickey S. DeLaup
Examiner—Torts
 Ronald J. White
Examiner—Business Entities & Negotiable Instruments
 Kelly M. Legier
Examiner—Constitutional Law
 Stephanie A. Finley
Examiner—Criminal Law, Procedure & Evidence
 S. Christopher Slatten
Examiner—Federal Jurisdiction & Procedure
 Brian A. Jackson
Character and Fitness Panel Member
 Bernadette G. D’Souza
Character and Fitness Panel Member
 Denise S. Leeper
Bar Admissions Administrator
 Rhonda Lorig
Bar Admissions Assistant

LOUISIANA COURTS OF APPEAL *Two Year Trend in Activity***OFFICE OF THE CLERK**

John Tarlton Olivier, JD
Clerk of Court
Jeffrey Charles Collins, JD
Chief Deputy Clerk of Court
Rachel Edelman
2nd Deputy Clerk of Court
Rai Daigle
Deputy Clerk—Front Office
Carmen B. Young
Deputy Clerk—Opinions & Filings
Eddie Gonzales
Deputy Clerk—Records Manager & Property Manager
Peter Haas
Director of Information Systems
John White, CPA
Business Services Manager
Tommy M. Anderson
Director of Security

2009 JUDICIARY COMMISSION

Judge Edwin Lombard, Chair
Sharonda R. Williams, Esq., Vice Chair
Mark A. Delphin, Esq.
William Hall, Esq.
Judge Bonnie F. Jackson
Mrs. Carol LeBlanc
Judge Sharon Marchman
Mr. Duplain W. Rhodes III
Dr. Clinton Young

STAFF OF THE JUDICIARY COMMISSION

Hugh M. Collins, Ph.D.
Chief Executive Officer
Timothy J. Palmatier, JD, MBA, CPA
Deputy Chief Executive Officer
Nancy E. Rix, JD
Commission Legal Counsel

STAFF OF THE OFFICE OF SPECIAL COUNSEL

Henry Bellamy, JD, Special Counsel

THE JUDICIARY COMMISSION OF LOUISIANA, CREATED IN 1968 BY AN AMENDMENT TO ARTICLE IX, CONSTITUTION OF 1921, IS CONTINUED IN EXISTENCE BY ARTICLE V, SECTION 25, CONSTITUTION OF 1974.

LOUISIANA ATTORNEY DISCIPLINARY BOARD

Joseph R. Ward Jr., Chair
Dennis W. Hennen, Vice-Chair
William D. Aaron Jr.
Lila Tritico Hogan (LSBA Member)
Charles C. Beard Jr.
John T. Cox, Jr.
George L. Crain
James R. Dagate
Lev M. Dawson
Dow M. Edwards
Richard E. Gerard Jr.
Ralph K. Lee Jr.
Linda P. Spain
Michael S. Walsh

	2008 Total	2009 Total	2009 Civil	2009 Criminal
FIRST CIRCUIT				
Appeals Filed	861	823	623	200
Motions Filed	50	37	23	14
Writs Filed (except Pro Se)	666	625	420	205
Writs Refused*	509	485	327	158
Writs Granted	117	171	130	41
Pro Se Writs Filed	1,073	906	184	722
Pro Se Writs Refused*	990	894	196	698
Pro Se Writs Granted	81	102	23	79
Appeals Dismissed/Transferred	152	142	120	22
Consolidated Opinions	50	72	72	0
Opinions Rendered **	676	680	483	197
Rehearings Acted Upon***	186	188	143	45
Appeals Pending	471	417	343	74
Argued But Not Decided	50	40	40	0
To Be Argued	421	377	303	74
Opinions Rendered Per Judge by Circuit	56	57	40	16
SECOND CIRCUIT				
Appeals Filed	432	385	247	138
Motions Filed	12	6	3	3
Writs Filed (except Pro Se)	259	245	157	88
Writs Refused*	180	205	118	87
Writs Granted	48	61	42	19
Pro Se Writs Filed	363	338	21	317
Pro Se Writs Refused*	363	294	15	279
Pro Se Writs Granted	26	39	5	34
Appeals Dismissed/Transferred	31	39	37	2
Consolidated Opinions	34	30	12	18
Opinions Rendered **	385	366	216	150
Rehearings Acted Upon***	67	81	50	31
Appeals Pending	206	170	108	62
Argued But Not Decided	61	47	26	21
To Be Argued	145	123	82	41
Opinions Rendered Per Judge by Circuit	43	41	24	17
THIRD CIRCUIT				
Appeals Filed	602	596	414	182
Motions Filed	27	27	13	14
Writs Filed (except Pro Se)	412	391	291	100
Writs Refused*	317	266	197	69
Writs Granted	90	87	51	36
Pro Se Writs Filed	540	556	23	533
Pro Se Writs Refused*	470	481	18	463
Pro Se Writs Granted	79	51	2	49
Appeals Dismissed/Transferred	40	37	31	6
Consolidated Opinions	0	2	2	0
Opinions Rendered **	545	557	380	177
Rehearings Acted Upon***	79	106	70	36
Appeals Pending	300	302	209	93
Argued But Not Decided	32	19	15	4
To Be Argued	268	283	194	89
Opinions Rendered Per Judge by Circuit	45	46	32	15

LOUISIANA COURTS OF APPEAL *Two Year Trend in Activity*

	2008 Total	2009 Total	2009 Civil	2009 Criminal
FOURTH CIRCUIT				
Appeals Filed	453	477	354	123
Motions Filed	20	18	13	5
Writs Filed (except Pro Se)	650	878	430	448
Writs Refused*	461	623	327	296
Writs Granted	188	239	102	137
Pro Se Writs Filed	461	377	14	363
Pro Se Writs Refused*	379	318	8	310
Pro Se Writs Granted	90	72	4	68
Appeals Dismissed/Transferred	62	69	59	10
Consolidated Opinions	79	25	23	2
Opinions Rendered **	422	429	328	101
Rehearings Acted Upon***	91	116	87	29
Appeals Pending	276	300	213	87
Argued But Not Decided	88	77	71	6
To Be Argued	188	223	142	81
Opinions Rendered Per Judge by Circuit	35	36	27	8
FIFTH CIRCUIT				
Appeals Filed	323	351	194	157
Motions Filed	18	8	5	3
Writs Filed (except Pro Se)	281	289	188	101
Writs Refused*	183	190	136	54
Writs Granted	70	83	45	38
Pro Se Writs Filed	690	479	15	464
Pro Se Writs Refused*	241	289	7	282
Pro Se Writs Granted	97	125	2	123
Appeals Dismissed/Transferred	33	42	30	12
Consolidated Opinions	2	13	10	3
Opinions Rendered **	286	306	177	129
Rehearings Acted Upon***	55	48	25	23
Appeals Pending	168	180	103	77
Argued But Not Decided	64	55	41	14
To Be Argued	104	125	62	63
Opinions Rendered Per Judge by Circuit	36	38	22	16
TOTAL FOR ALL CIRCUITS				
Appeals Filed	2,671	2,632	1,832	800
Motions Filed	127	96	57	39
Writs Filed (except Pro Se)	2,268	2,428	1,486	942
Writs Refused*	1,650	1,769	1,105	664
Writs Granted	513	641	370	271
Pro Se Writs Filed	3,127	2,656	257	2,399
Pro Se Writs Refused*	2,443	2,276	244	2,032
Pro Se Writs Granted	373	389	36	353
Appeals Dismissed/Transferred	318	329	277	52
Consolidated Opinions	165	142	119	23
Opinions Rendered **	2,314	2,338	1,584	754
Rehearings Acted Upon***	478	539	375	164
Appeals Pending	1,421	1,369	976	393
Argued But Not Decided	295	238	193	45
To Be Argued	1,126	1,131	783	348
Opinions Rendered Per Judge	44	44	30	14

**LOUISIANA JUDICIAL COLLEGE
BOARD OF GOVERNORS**

CHAIRMAN

Justice Jeffrey P. Victory
Supreme Court of Louisiana

MEMBERS

Judge Gene Thibodeaux
Court of Appeal, 3rd Circuit
 Judge Fredericka Wicker
Court of Appeal, 5th Circuit
 Judge Alvin Turner
23rd Judicial District Court
 Judge John Michael Guidry
Court of Appeal, 1st Circuit
 Judge Harry F. Randow
9th Judicial District Court
 Judge Benedict J. Willard
Criminal District Court
 Judge Michael Pitman
1st Judicial District Court
 Judge Kim Stansbury
City Court of Morgan City
 Judge M'elise Trahan
Crowley City Court
 Vacancy
(La. Representative)
 Vacancy
(Senate Representative)

EX-OFFICIO

Hon. Tim Barfield
Executive Counsel to the Governor
 Kim Boyle
President, Louisiana State Bar Association
 Judge Joan Bernard Armstrong
Conference of Court of Appeal Judges
 Judge Madeleine Landrieu
Louisiana District Judges Association
 Judge John Slattery
Louisiana City Judges Association
 Judge Grace Gasaway
Louisiana Juvenile Judges Association

EXECUTIVE DIRECTOR

Cheney C. Joseph, Jr.
Baton Rouge
 Phone (225) 578-8825
 Fax (225) 578-8762

* Includes writs denied, writs not considered, writs dismissed and transferred

** Includes opinions on appeals, writs, rehearings & supplemental opinions

*** Includes rehearings on writs

LOUISIANA DISTRICT COURTS *Two Year Trend in Activity*

DISTRICT	PARISH	2008	2009	2009	2009	2009 ³	2009	JURY TRIALS	
		Total Filed	Juvenile Filed	Civil Filed	Criminal Filed	Traffic Filed	Total Filed	Civil Filed	Criminal Filed
1	Caddo ^{1,4} District Totals:	24,182 24,182	463 463	8,560 8,560	9,291 9,291	8,304 8,304	26,618 26,618	5 5	43 43
2	Bienville Claiborne Jackson District Totals:	5,149 5,983 1,962 13,094	26 186 410 622	565 358 613 1,536	785 729 852 2,366	4,101 3,632 864 8,597	5,477 4,905 2,739 13,121	0 0 0 0	4 0 3 7
3	Lincoln Union District Totals:	5,649 3,122 8,771	437 274 711	882 678 1,560	1,821 1,247 3,068	2,568 655 3,223	5,708 2,854 8,562	2 0 2	4 0 4
4	Morehouse Ouachita District Totals:	6,620 38,574 45,194	366 1,225 1,591	761 4,688 5,449	1,310 7,932 9,242	2,821 24,515 27,336	5,258 38,360 43,618	0 3 3	5 21 26
5	Franklin Richland West Carroll District Totals:	2,567 4,330 1,670 8,567	212 184 107 503	748 673 329 1,750	800 1,273 617 2,690	880 2,552 794 4,226	2,640 4,682 1,847 9,169	0 0 0 0	3 1 1 5
6	East Carroll Madison Tensas District Totals:	4,922 3,542 1,340 9,804	111 181 31 323	177 326 199 702	344 684 657 1,685	2,104 3,303 741 6,148	2,736 4,494 1,628 8,858	0 1 0 1	1 2 1 4
7	Catahoula Concordia District Totals:	1,601 3,040 4,641	34 271 305	426 670 1,096	436 1,320 1,756	772 586 1,358	1,668 2,847 4,515	1 0 1	0 3 3
8	Winn District Totals:	2,732 2,732	174 174	605 605	616 616	1,457 1,457	2,852 2,852	1 1	1 1
9	Rapides District Totals:	22,101 22,101	1,257 1,257	3,730 3,730	4,999 4,999	13,365 13,365	23,351 23,351	5 5	17 17
10	Natchitoches District Totals:	10,939 10,939	2,167 2,167	1,355 1,355	1,588 1,588	5,612 5,612	10,722 10,722	2 2	3 3
11	Sabine District Totals:	6,510 6,510	234 234	742 742	1,541 1,541	3,239 3,239	5,756 5,756	1 1	0 0
12	Avoyelles District Totals:	7,925 7,925	417 417	1,965 1,965	2,650 2,650	3,473 3,473	8,505 8,505	1 1	16 16
13	Evangeline District Totals:	5,091 5,091	590 590	1,131 1,131	1,022 1,022	5,449 5,449	8,192 8,192	0 0	5 5
14	Calcasieu District Totals:	25,955 25,955	1,631 1,631	6,420 6,420	9,159 9,159	11,924 11,924	29,134 29,134	21 21	15 15
15	Acadia ⁵ Lafayette ² Vermilion District Totals:	9,823 28,971 10,897 49,691	410 2,522 428 3,360	1,988 7,946 1,759 11,693	1,521 5,591 3,309 10,421	7,313 13,202 4,158 24,673	11,232 29,261 9,654 50,147	2 8 2 12	1 16 9 26
16	Iberia St. Martin St. Mary District Totals:	13,881 12,531 10,717 37,129	219 700 669 1,588	2,369 1,813 1,750 5,932	2,395 2,253 3,232 7,880	8,610 17,887 3,885 30,382	13,593 22,653 9,536 45,782	3 5 3 11	10 5 12 27
17	Lafourche District Totals:	18,416 18,416	781 781	2,728 2,728	5,304 5,304	12,212 12,212	21,025 21,025	5 5	11 11
18	Iberville Pointe Coupee West Baton Rouge District Totals:	10,274 3,116 4,194 17,584	269 166 105 540	1,750 736 894 3,380	1,369 1,440 1,284 4,093	9,956 3,682 2,283 15,921	13,344 6,024 4,566 23,934	2 2 2 6	5 1 4 10
19	East Baton Rouge ¹ District Totals:	55,203 55,203	0 0	14,909 14,909	10,377 10,377	36,561 36,561	61,847 61,847	24 24	35 35
20	East Feliciana West Feliciana District Totals:	3,132 900 4,032	70 29 99	1,199 347 1,546	924 414 1,338	2,303 445 2,748	4,496 1,235 5,731	0 0 0	6 2 8

LOUISIANA DISTRICT COURTS *Two Year Trend in Activity*

DISTRICT	PARISH	2008 Total Filed	2009 Juvenile Filed	2009 Civil Filed	2009 Criminal Filed	2009 ³ Traffic Filed	2009 Total Filed	JURY TRIALS Civil Filed	Criminal Filed
21	Livingston	17,606	829	4,284	3,878	10,566	19,557	2	6
	St. Helena	2,729	74	391	1,027	2,319	3,811	0	0
	Tangipahoa	25,915	866	4,164	5,311	23,461	33,802	2	13
	District Totals:	46,250	1,769	8,839	10,216	36,346	57,170	4	19
22	St. Tammany	54,667	1,594	8,521	9,457	45,541	65,113	13	117
	Washington	5,297	612	1,345	1,246	4,249	7,452	2	21
	District Totals:	59,964	2,206	9,866	10,703	49,790	72,565	15	138
23	Ascension ¹	5,925	669	3,944	1,612	0	6,225	6	28
	Assumption	4,136	223	819	985	3,432	5,459	2	4
	St. James	5,653	271	960	952	4,675	6,858	1	9
	District Totals:	15,714	1,163	5,723	3,549	8,107	18,542	9	41
24	Jefferson ¹	20,174	0	13,550	6,844	0	20,394	36	96
	District Totals:	20,174	0	13,550	6,844	0	20,394	36	96
25	Plaquemines	5,274	129	845	1,111	4,807	6,892	1	0
	District Totals:	5,274	129	845	1,111	4,807	6,892	1	0
26	Bossier	21,960	2,017	3,336	8,771	8,020	22,144	1	10
	Webster	8,406	418	1,231	2,228	5,239	9,116	0	5
	District Totals:	30,366	2,435	4,567	10,999	13,259	31,260	1	15
27	St. Landry	29,322	652	2,896	2,586	26,913	33,047	7	22
	District Totals:	29,322	652	2,896	2,586	26,913	33,047	7	22
28	LaSalle	3,241	138	501	949	1,654	3,242	0	5
	District Totals:	3,241	138	501	949	1,654	3,242	0	5
29	St. Charles	30,220	328	1,787	2,233	24,863	29,211	5	3
	District Totals:	30,220	328	1,787	2,233	24,863	29,211	5	3
30	Vernon	12,956	290	1,542	1,950	9,687	13,469	2	5
	District Totals:	12,956	290	1,542	1,950	9,687	13,469	2	5
31	Jefferson Davis	13,645	122	977	1,298	12,030	14,427	3	4
	District Totals:	13,645	122	977	1,298	12,030	14,427	3	4
32	Terrebonne	32,475	707	3,754	5,064	23,900	33,425	7	17
	District Totals:	32,475	707	3,754	5,064	23,900	33,425	7	17
33	Allen	4,107	268	730	1,423	2,688	5,109	4	3
	District Totals:	4,107	268	730	1,423	2,688	5,109	4	3
34	St. Bernard	14,629	169	2,220	6,500	7,401	16,290	4	1
	District Totals:	14,629	169	2,220	6,500	7,401	16,290	4	1
35	Grant	4,994	290	669	992	3,855	5,806	0	5
	District Totals:	4,994	290	669	992	3,855	5,806	0	5
36	Beauregard	8,539	95	1,366	1,195	6,838	9,494	1	4
	District Totals:	8,539	95	1,366	1,195	6,838	9,494	1	4
37	Caldwell	2,197	113	345	1,172	882	2,512	3	1
	District Totals:	2,197	113	345	1,172	882	2,512	3	1
38	Cameron	4,842	64	299	1,368	2,732	4,463	1	0
	District Totals:	4,842	64	299	1,368	2,732	4,463	1	0
39	Red River	3,402	202	265	272	2,123	2,862	0	0
	District Totals:	3,402	202	265	272	2,123	2,862	0	0
40	St. John the Baptist	18,717	915	2,488	2,771	22,601	28,775	3	3
	District Totals:	18,717	915	2,488	2,771	22,601	28,775	3	3
42	DeSoto	17,800	269	981	1,516	8,802	11,568	0	5
	District Totals:	17,800	269	981	1,516	8,802	11,568	0	5
	Orleans Civil ¹	12,977	0	13,131	0	0	13,131	51	0
	Orleans Criminal ¹	7,877	0	0	10,736	0	10,736	0	226
	District Totals:	20,854	0	13,131	10,736	0	23,867	51	226
	Statewide Totals:	777,243	29,680	154,130	176,533	495,486	855,829	258	879

2009 Report of the Total Number of Awards and the Total Amount of Funds Distributed for Wrongful Conviction and Imprisonment*

Total Number of Awards: 2 Total Amount Awarded: \$60,580 Total Amount of Funds Distributed, Including Previous Year Awards: \$1,198,852

1. Violations of Traffic, Misdemeanors, and/or Juvenile/Family Laws are Processed by Parish, City, and/or Juvenile/Family Courts. 2. Criminal filed for Lafayette denotes the number of defendants, not the number of cases filed. 3. DWI is included in the criminal totals beginning in 1990. 4. Caddo parish issued a correction to their 2008 Total Filed number by 4,555 for Clerk of Court reclassification of filings. 5. Acadia Parish increased their 2008 Total Filed number by 56 filings after discovering a programming problem. *Pursuant to R.S. 15:572.8, Act 262, Regular Session 2007.

JUVENILE JUDICIAL ACTIVITY: FORMAL PROCESS – CALENDAR YEAR 2009

	CADD0			E. BATON ROUGE		
	Filings	Charges	Children ¹	Filings	Charges	Children ¹
Formal FINS	355	384	355	39	115	39
Juvenile Traffic	274	369	274	567	895	567
Juvenile Delinquency	1,787	2,135	1,787	2,192	3,168	2,192
Mental Incapacity to Proceed ²	0	0	0	5	16	5
Interstate compact for Juveniles	0	0	0	0	0	0
Contempt of Court	393	393	393	1,778	1,778	1,778
Child in Need of Care Cases	154		293	95		150
Voluntary Transfer of Custody	29		29	61		76
Jud. Certification of Children for Adoption Cases	15		15	4		4
Surrender of Parental Rights	11		11	61		54
Adoption	56		56	79		87
Child Support	638		0	1,495		0
Mental Health	291		291	4		4
Misdemeanor Prosecution of Adults/Other	0		0	0		0
Minor Marriages	0		0	0		0
Protection of Terminally Ill Children	0		0	0		0
Domestic Abuse	138		138	0		0
Other	10		10	3		4
Subtotal	4,151	3,281	3,652	6,383	5,972	4,960

FAMILY COURT FILINGS

EBR FAMILY COURT	
New Cases Filed	4,074
Divorces Granted	1,693
Rules Set for Hearings	5,488
Cases Dismissed	176
Paternity Cases and State Cases	1,073
Domestic Violence Cases	1,796
Disavowals	0
Annulments	5
Qualified Domestic Relations Orders	144
Stipulated Judgments	1,321
Income Assignments	497
Community Property	163
Joint Custody	33
Ex-Parte Custody	55

1. The category of Children denotes the number of children listed in filed petitions for each case type.

2. Mental Incapacity to Proceed is a subset of the category of Delinquency. The event is enumerated separately as it is considered a significant delinquency event.

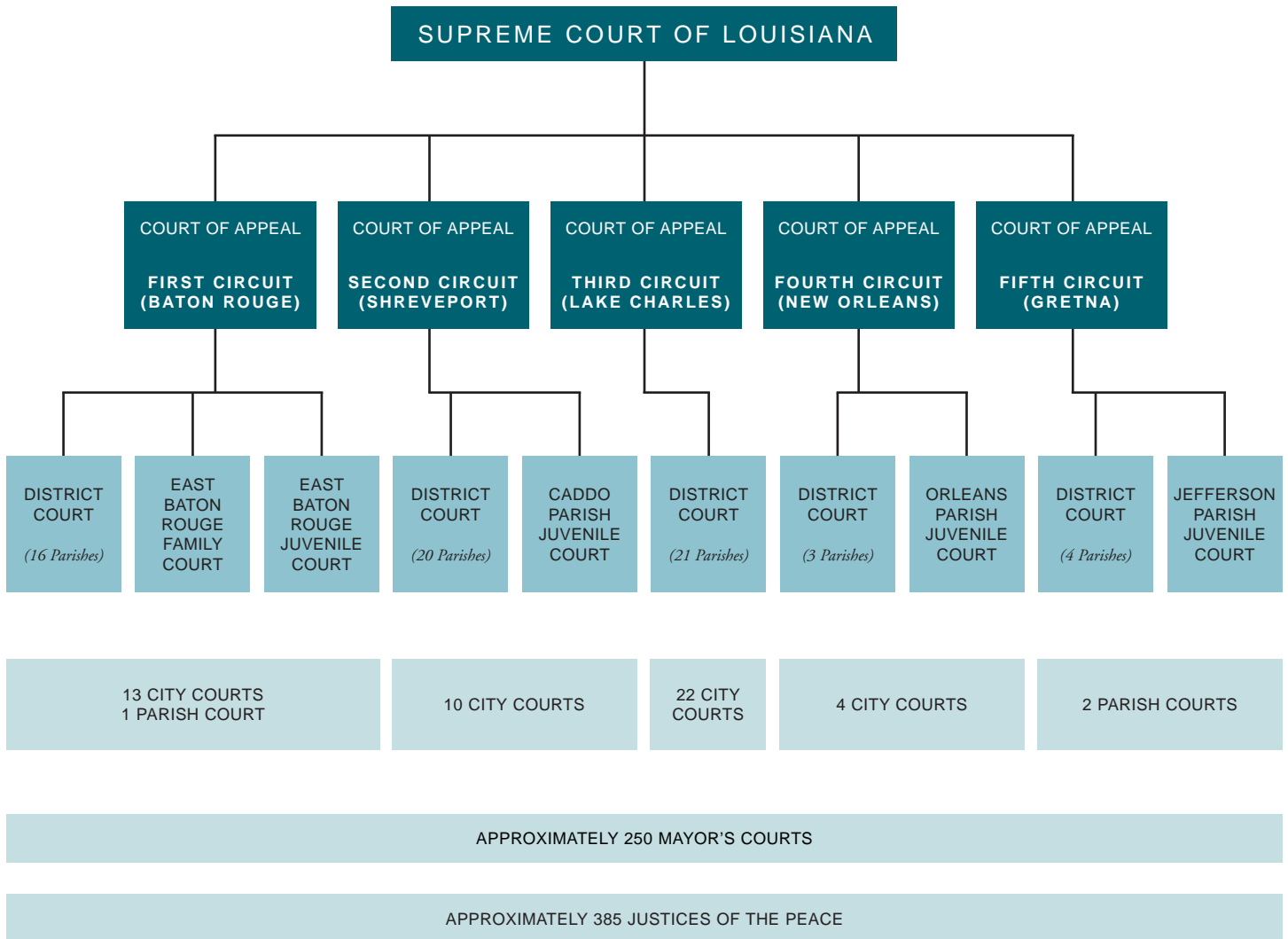
JEFFERSON			ORLEANS			GRAND TOTAL		
Filings	Charges	Children ¹	Filings	Charges	Children ¹	Filings	Charges	Children ¹
404	461	404	39	0	40	837	960	838
563	837	563	226	497	226	1,630	2,598	1,630
1,460	2,360	1,460	571	919	694	6,010	8,582	6,133
46	88	46	19	30	19	70	134	70
0	0	0	1	1	1	1	1	1
442	689	442	10	9	10	2,623	2,869	2,623
202		202	84		111	535		756
411		411	33		39	534		555
77		77	11		16	107		112
29		29	16		17	117		111
190		190	49		54	374		387
2,166		0	0		0	4,299		0
1		1	0		0	296		296
15		0	0		0	15		0
1		1	0		0	1		1
1		1	0		0	1		1
0		0	0		0	138		138
0		0	1,740		1,201	1,753		1,215
6,008	4,435	3,827	2,799	1,456	2,428	19,341	15,144	14,867

LOUISIANA CITY AND PARISH COURTS *Cases Processed*

CITY	Filed	Term.	Filed	Term.	Filed	Term.	Filed	Term.	Filed	Term.	Filed	Term.
	CIVIL		CRIMINAL		TRAFFIC*		JUVENILE		TOTAL CASES		OTHER PROCEEDINGS**	
Abbeville	545	389	745	648	2,308	2,574	400	399	3,998	4,010	0	0
Alexandria	3,075	1,844	8,196	4,801	13,576	13,576	0	0	24,847	20,221	0	0
Ascension	694	198	5,589	4,860	16,008	15,221	199	446	22,490	20,725	0	0
Baker	560	462	781	345	7,919	6,082	0	0	9,260	6,889	0	0
Bastrop	916	846	1,108	1,073	2,116	2,063	58	51	4,198	4,033	833	0
Baton Rouge	11,977	9,897	41,173	32,228	156,218	125,434	0	0	209,368	167,559	51,900	63,508
Bogalusa	430	108	1,300	1,308	1,824	2,453	249	196	3,803	4,065	0	0
Bossier City	2,431	1,569	3,604	2,897	20,340	17,380	1,796	1,486	28,171	23,332	401	367
Breaux Bridge	491	442	949	1,053	1,604	1,623	131	181	3,175	3,299	121	102
Bunkie	59	60	240	240	854	854	93	94	1,246	1,248	0	0
Crowley	592	469	3,136	1,390	9,414	4,803	442	331	13,584	6,993	0	0
Denham Springs	1,747	1,645	2,050	2,161	16,593	13,818	695	605	21,085	18,229	134	134
Eunice	561	445	2,011	2,259	3,357	2,749	196	196	6,125	5,649	0	0
Franklin	386	340	958	1,591	791	893	168	52	2,303	2,876	86	55
Hammond	2,387	1,804	3,460	1,828	12,763	9,455	899	460	19,509	13,547	0	0
Houma	4,426	2,669	3,369	4,597	5,930	6,523	2,068	1,641	15,793	15,430	1,452	1,158
Jeanerette	138	158	564	529	3,630	2,958	207	173	4,539	3,818	0	0
Jeff. 1st Parish Ct.	3,164	4,591	6,994	14,313	73,988	119,053	0	0	84,146	137,957	0	0
Jeff. 2nd Parish Ct.	4,730	5,661	5,698	12,714	59,962	94,576	0	0	70,390	112,951	0	0
Jennings	442	391	571	273	2,697	2,138	23	18	3,733	2,820	0	0
Kaplan	94	88	282	327	939	759	126	122	1,441	1,296	0	0
Lafayette	3,469	3,327	3,307	4,239	28,271	23,590	736	499	35,783	31,655	574	574
Lake Charles	3,861	2,726	3,525	3,425	13,050	12,354	81	93	20,517	18,598	0	0
Leesville	181	38	1,696	1,656	2,645	2,170	76	30	4,598	3,894	0	0
Marksville	685	654	981	898	1,607	1,444	106	94	3,379	3,090	0	0
Minden	503	604	1,059	868	1,311	1,213	90	87	2,963	2,772	120	120
Monroe	3,788	1,582	5,335	6,219	21,043	18,705	662	248	30,828	26,754	0	0
Morgan City	597	425	1,016	1,163	1,208	1,163	153	158	2,974	2,909	0	0
Natchitoches	660	349	1,865	2,152	4,722	5,257	276	176	7,523	7,934	75	75
New Iberia	1,279	1,186	1,847	1,870	5,181	5,321	223	307	8,530	8,684	286	185
N.O. 1st City Ct.	9,210	7,798	0	0	0	0	0	0	9,210	7,798	0	0
N.O. 2nd City Ct.	1,784	1,485	0	0	0	0	0	0	1,784	1,485	0	0
N.O. Municipal	0	0	36,680	35,232	0	0	0	0	36,680	35,232	0	0
N.O. Traffic	0	0	3,761	2,420	171,010	135,435	0	0	174,771	137,855	0	0
Oakdale	314	239	433	131	3,084	452	131	131	3,962	953	0	0
Opelousas	984	760	2,555	2,657	4,480	4,035	581	445	8,600	7,897	0	0
Pineville	935	449	4,518	4,257	2,923	2,975	0	0	8,376	7,681	0	0
Plaquemine	460	460	401	384	1,380	1,378	92	92	2,333	2,314	0	0
Port Allen	337	178	383	240	11,620	5,352	122	97	12,462	5,867	0	0
Rayne	493	463	624	634	1,779	1,648	72	77	2,968	2,822	3	3
Ruston	1,582	1,023	1,260	812	2,423	2,215	0	0	5,265	4,050	795	858
Shreveport	11,030	9,724	11,486	12,070	41,188	39,980	0	0	63,704	61,774	0	0
Slidell	1,952	1,555	2,488	2,325	8,687	7,968	660	530	13,787	12,378	325	325
Springhill	479	453	1,627	986	1,344	1,344	335	251	3,785	3,034	201	71
Sulphur	1,029	742	3,093	3,481	9,373	13,179	198	184	13,693	17,586	327	283
Thibodaux	1,043	247	2,815	2,526	3,891	3,816	409	367	8,158	6,956	0	0
Vidalia	26	15	171	84	1,159	479	57	27	1,413	605	0	0
Ville Platte	692	431	1,589	1,075	1,817	922	232	208	4,330	2,636	0	0
West Monroe	1,725	1,401	2,468	2,351	3,641	4,764	98	104	7,932	8,620	289	289
Winnfield	90	86	567	344	686	435	0	0	1,343	865	0	0
Winnsboro	380	72	525	488	619	548	41	34	1,565	1,142	0	0
Zachary	357	217	826	740	2,099	1,929	0	0	3,282	2,886	0	0
STATE TOTALS:	89,770	72,765	191,679	187,162	765,072	745,056	13,181	10,690	1,059,702	1,015,673	57,922	68,107

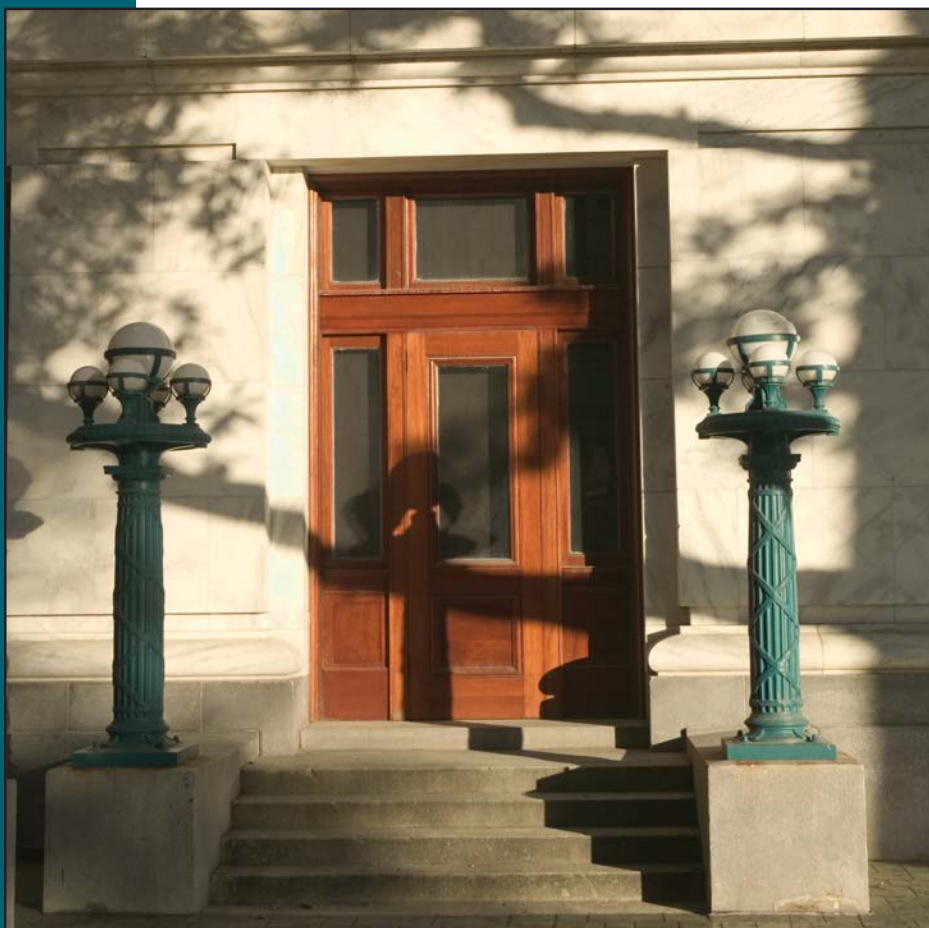
* DWI is included in the Criminal Column

** Other proceedings include actions not considered cases, such as post-conviction remedy, preliminary hearings, sentence review and extraordinary writs.



Number of Justices and Judges:	7	Supreme Court
	53	Courts of Appeal
	247	District, Family and Juvenile (includes 11 Commissioners)
	73	City and Parish Courts
	380	Total

Judicial Administrator's Office
The Supreme Court of Louisiana
400 Royal Street, Suite 1190
New Orleans, Louisiana 70130
(504) 310-2550 · www.lasc.org



Annual Report 2009 of the Judicial Council
of the Supreme Court of Louisiana

Judicial Administrator: Hugh M. Collins, Ph.D.

Editor: Valerie S. Willard, JD

Layout and Web Design: Robert Gunn

Statistical Section compiled by: Hugh M. Collins, Ph.D.;
Timothy J. Palmatier, JD, MBA, CPA; Court Management Information
System (CMIS) Staff; Court of Appeal Reporting System (CARS) Staff

This public document was published at a total cost of \$3,675.98. 1,250 copies of this public document were published in this first printing at a cost of \$2.94 per copy. This document was published by the Judicial Administrator's Office, 400 Royal St., Suite 1190, New Orleans, LA, 70130 as the annual report of the Judicial Council under the authority of the Judicial Budgetary Control Board and Supreme Court Rule XXII.